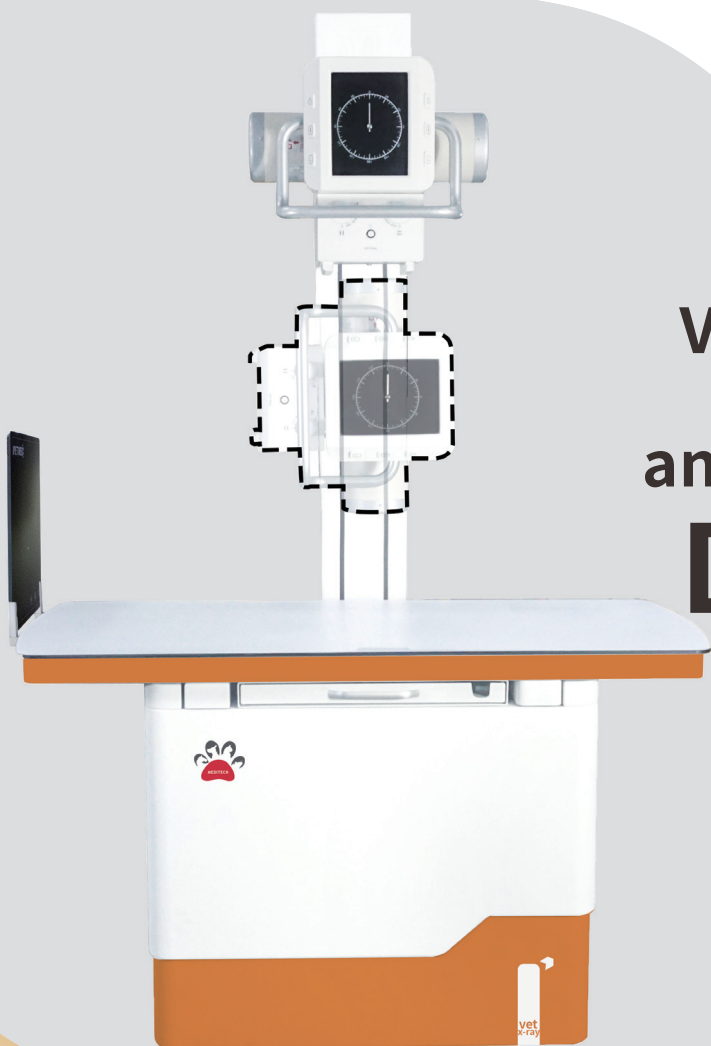


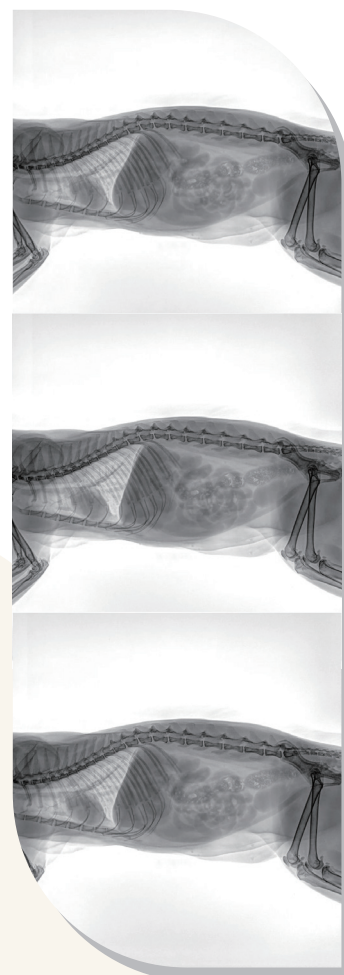
Veterinary Digital Static & Dynamic X-ray and Fluoroscopy Machine **DRT-META32**



Fluoroscopy & Dynamic Video & Static Images

Make the Diagnostic More Accurate

Upgrading from the traditional static image to a new dynamic video format, to maximize the satisfaction of veterinary clinical needs. On the basis of continuing the traditional static DR technology, ensuring the stability and image performance quality of the product, veterinarians can dynamically and real-time observe the movement and changes in the animal's body, accurately diagnose, reduce misdiagnosis, reduce risks, and greatly increase veterinary diagnostic confidence.



One set pictures from dynamic video

Ultra High Frequency and High Voltage Generator

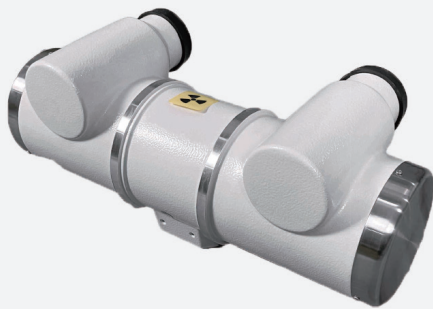
Significantly reduce the dose of scattered radiation and reduce the harm to users

Specific for Dynamic Imaging

Power: 32KW Single-phase three-wire 120V/220V 50/60Hz
Working Frequency: 80 -300kHz
mAs Range: 0.1-320mAs
Output Tube Current Range: Photography Mode: 10-400mA / Continuous Fluoroscopy Mode 0.5-10mA / Pulse Fluoroscopy Mode: 0.5-100mA

Tube Voltage Range:
Photography Mode 40-150KV / Fluoroscopy Mode 40-125KV

Exposure Time:
Photography Mode 0.001-20seconds
Fluoroscopy Mode: Max 5minutes



X-ray Tube

High heat capacity, heat resistance and high speed

Tube Voltage: 40-125Kv
Focus: 0.6/1.2mm
Anode Input Power: small focus 20kW large focus 40 Kw
Filament Current: 5. 5A
Target Angle: 12.5 °
Anode Heat Capacity: 212KJ(300KHU)

Manual Collimator

Radiation Field: Maximum 43*43 cm
Power Supply: DC/AC12V-24V
Light Delay: 30±5 seconds
Inherent Filtering: ≥1.5mm Al
Weight: 6KG±0.5KG

22inch touch screen
(synchronized display and operation at the bedside) +
24 inch LED display



Flat Panel Detector

High frame rate dynamic video imaging, low dose and high sensitivity, achieving excellent images

Sensor: Amorphous Silicon TFT
Scintillator: Cesium Iodide CsI
Effective Range: 427mm x 427mm
Pixel Matrix: 3072 x 3072
A/D Conversion: 16 bits
Pixel Pitch: 139 μ m
Lifespan (dose): \geq 1000Gy
Ultimate Spatial Resolution: 3.4lp/mm(1x1 binning) /1.8lp/mm(2x2 binning)/ 1.0lp/mm(3x3 binning)



Electromagnetic Locking Four-way Floating Bed

Can bear weight up to 200KG
With medical grade spraying, rust proof and anti-aging
Bed Size L*W* H: 1500*700 *1950mm
Able to move horizontally with -250~250mm and vertically with -100~100mm

X-ray Imaging Software Intelligent assistance makes work simpler

Cloud image, can achieve multi terminal diagnostic images
Both in hospital and out of hospital mobile devices are available
Adopting a new generation of advanced algorithm technology, it not only has excellent image processing capabilities, but also uses a simple and user-friendly workflow design to meet the clinical needs of veterinarians to the greatest extent.
ABS see-through automatic brightness adjustment
Preset 1400 sets of APR parameters, and optimize images for different shooting positions
Veterinary measuring tools VHS, TPLO, TTA, HIP, TTA2, etc.

TooToo Meditech Co., Ltd.

Address: 3A, Phase II, Smart Home, Baolong Street, Longgang District, Shenzhen, Guangdong, China

Tel: +86-755-28306385

Email: info@newtootoo.com

Whatsapp: +86 136 3258 4549

Web: www.newtootoo.com

