

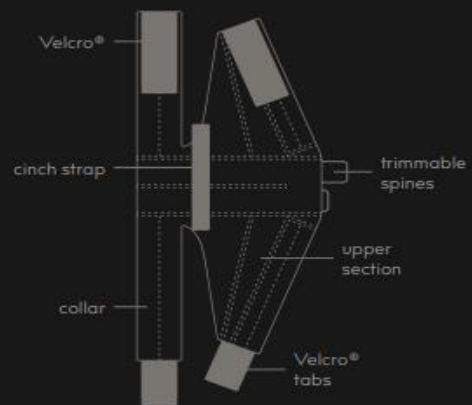


REHABILITATION

Our revolutionary rehabilitation products,
post-operative orthopedic splints, and
orthopedic bracing are truly world class

www.kvpvet.com/rehabilitation

KVP No Flap™ Ear Wrap



No Flap™ Ear Wrap

Healing Ears One Dog at a Time

Aids in the recovery from aural hematomas, ear flap injuries, and discourages chronic itching and scratching. Its unique design offers a secure fit with integrated plastic spines to keep the wrap in place.

ITEM #	SIZE	A*	B*
<i>Green Pinpoint Mesh</i>			
NFP01XS	XS	13 - 18cm	25 - 36cm
NFP02S	S	15 - 20cm	33 - 43cm
NFP03SM	S/M	18 - 23cm	38 - 48cm
NFP04M	M	20 - 25cm	43 - 56cm
NFP05L	L	25 - 30cm	46 - 58cm
NFP06XL	XL	30 - 36cm	53 - 66cm
<i>Denim</i>			
NFD01XS	XS	13 - 18cm	25 - 36cm
NFD02S	S	15 - 20cm	33 - 43cm
NFD03SM	S/M	18 - 23cm	38 - 48cm
NFD04M	M	20 - 25cm	43 - 56cm
NFD05L	L	25 - 30cm	46 - 58cm
NFD06XL	XL	30 - 36cm	53 - 66cm



MEASUREMENT A:
Measure from the middle of the forehead above the eyes to base of the neck.

MEASUREMENT B:
Measure around the neck.



Recova Shirt™

Promotes post-surgical healing, preventing pets from aggravating sensitive areas. Ideal for treating skin issues and can help reduce stress or anxiety



ITEM #	A	B
RSXXS	21 - 24cm	26 - 29cm
RSXS	25 - 29cm	30 - 34cm
RSS	25 - 33cm	45 - 53cm
RSM	35 - 43cm	56 - 68cm
RSL	45 - 53cm	63 - 79cm
RSXL	53 - 61cm	66 - 81cm
RSXXL	74 - 86cm	84 - 99cm
RSXXXL	84 - 94cm	99 - 112cm

MEASUREMENT A:

Measure along the spine from the base of the neck to the tail

MEASUREMENT B:

Measure circumference of chest behind the front legs



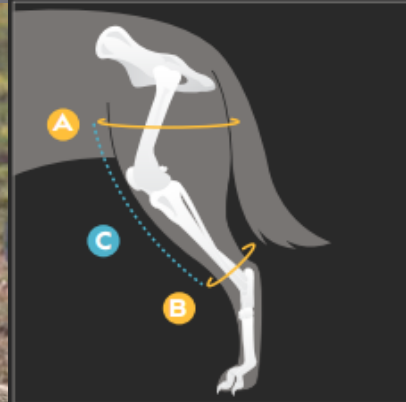
APPLICATION

1. Slide the Recova Shirt over your dog's head.
2. Pull the dog's front legs into the leg holes. The Recova Shirt's fray-resistant material allows for the holes to be cut if a larger opening is needed.
3. Pull the dog's tail through the tail hole.
4. Bring the rear straps underneath the dog's legs and pull them upwards.
5. Pull back the panel to reveal two Velcro® strips. Attach both straps to the bottom strip and close the panel by re-attaching to the top strip.
6. Potty Mode: The lower half of the Recova shirt can easily be rolled or folded back and tucked away for the pet to relieve themselves.



Balto® Jump

Knee Brace Supports Cranial Cruciate Ligament (CCL) trauma, including full or partial tearing, luxating patella, and knee joint conditions such as arthritis, arthrosis and varus/valgus instability. Can be used as pre/post-surgical support, contralateral support, and as an alternative when surgery isn't an option. Removable splints also allow the brace to be used for compression.

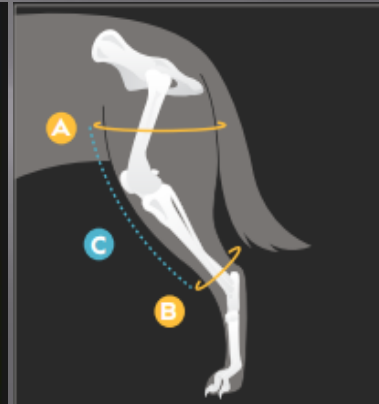


ITEM #	SIZE	A'	B'	C'
<i>Balto® Jump - Left</i>				
BTJUMPXXSL	XXS	8 - 13cm	3 - 5cm	8cm
BTJUMPXSL	XS	16 - 18cm	5 - 7cm	10cm
BTJUMPSL	S	21 - 25cm	8 - 15cm	15cm
BTJUMPML	M	26 - 31cm	10 - 16cm	18cm
BTJUMPLL	L	29 - 34cm	12 - 18cm	22cm
BTJUMPXLL	XL	36+ cm	N/A	25cm
<i>Balto® Jump - Right</i>				
BTJUMPXXSR	XXS	8 - 13cm	3 - 5cm	8cm
BTJUMPXSR	XS	16 - 18cm	5 - 7cm	10cm
BTJUMPSR	S	21 - 25cm	8 - 15cm	15cm
BTJUMPMR	M	26 - 31cm	10 - 16cm	18cm
BTJUMPLR	L	29 - 34cm	12 - 18cm	22cm
BTJUMPXLR	XL	36+ cm	N/A	25cm



Balto[®] Ligatek

Adjustable Hinged Knee Brace Balto Ligatek knee braces are designed to help dogs with damaged or broken cruciate ligaments, severe or medium sprains, traumas. They are useful after surgery or as an alternate to surgery. The joints on the support allow for partial or total immobilization of the joint as necessary

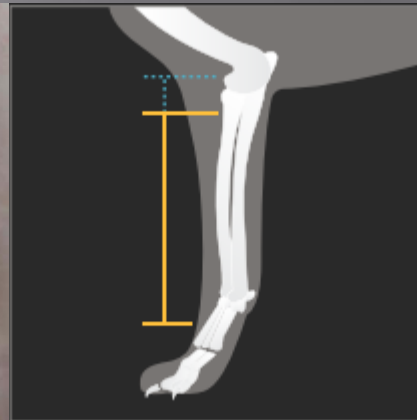


ITEM #	SIZE	A'	B'	C'
<i>Balto[®] Ligatek - Left</i>				
BTLIGSL	S	21 - 25cm	8 - 15cm	11 - 14cm
BTLIGML	M	26 - 31cm	10 - 16cm	14 - 18cm
BTLIGLL	L	29 - 34cm	12 - 18cm	15 - 21cm
BTLIGXLL	XL	36+ cm	N/A	16 - 23cm
<i>Balto[®] Ligatek - Right</i>				
BTLIGSR	S	21 - 25cm	8 - 15cm	11 - 14cm
BTLIGMR	M	26 - 31cm	10 - 16cm	14 - 18cm
BTLIGLR	L	29 - 34cm	12 - 18cm	15 - 21cm
BTLIGXLR	XL	36+ cm	N/A	16 - 23cm



Balto[®] Bone

Fracture Brace The Balto[®] Bone is an alternative to splints and casts for treating hyperextension and bone fractures of the front leg, ensuring support and stabilization during the healing process. The brace features three rigid splints one fixed onto the back of the brace, and two that can be freely adjusted with Velcro[®] to provide the optimum fit for your pet.



ITEM #	SIZE	WEIGHT	LENGTH
BTBONEXS	XS	5 - 10kg	8 - 10.5cm
BTBONES	S	10 - 15kg	11 - 14cm
BTBONEM	M	15 - 25kg	14.5 - 18cm
BTBONEL	L	25 - 45kg	18.5 - 21cm
BTBONEXL	XL	45 - 55kg	22 - 27cm
BTBONEXXL	XXL	55+ kg	27+ cm

LENGTH: Find the length of the affected leg by measuring from an inch below the elbow down to the carpus.

NOTE: It's recommended to use the Balto[®] Splint on the unaffected leg so the dog can better compensate for the compromised leg.



Balto[®] Joint

Carpal Compression Band The Balto[®] Joint comfortably stabilizes the affected area, reducing pain and swelling while the animal heals. It can also provide protection for wraps and bandages from licking or biting. By removing the rigid splints, the brace can also be used as a compression brace for acute or chronic arthritis and arthrosis. This brace is ideal for carpal lesions, lameness, arthritis, and arthrodesis.



ITEM #	SIZE	WEIGHT	CIRC.
BTJOINTXS	XS	4 - 8kg	6cm
BTJOINTS	S	8 - 25kg	7.5cm
BTJOINTM	M	25 - 35kg	10.5cm
BTJOINTL	L	35 - 50kg	11.5cm
BTJOINTXL	XL	50+ kg	13.5cm

CIRCUMFERENCE:
Circumference of the metacarpus



Balto® Splint

Carpal & Tarsal Laxity Splint Balto® Splint The Balto® Splint is specially designed to help support the radiocarpal, carpometacarpal and tarsometatarsal joints on the front and rear paws. This brace is ideal for hyperflexion or hyperextension of the carpal and tarsal, minor ligament distortions, sprains, and minor bone fractures.



ITEM #	SIZE	WEIGHT	CIRC.
BTSPSPLINTXXS	XXS	≤ 2kg	5cm
BTSPSPLINTXS	XS	≤ 5 - 7kg	7cm
BTSPSPLINTS	S	≤ 15kg	9.5cm
BTSPSPLINTM	M	≤ 25 - 30kg	11cm
BTSPSPLINTL	L	30+ kg	14.5cm

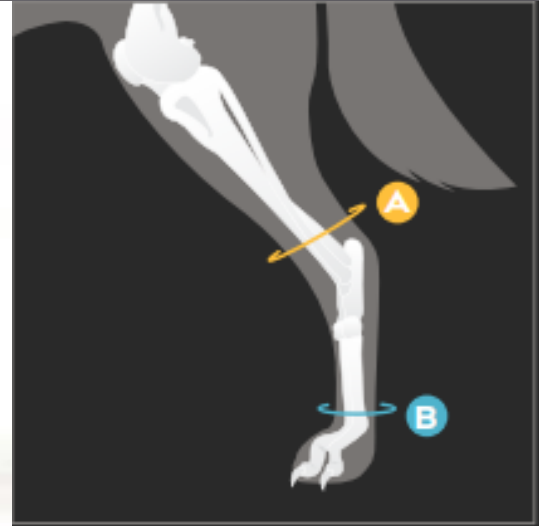
CIRCUMFERENCE:

Circumference of the metacarpus



Balto[®] Hock

Hock Brace Balto[®] Hock Addressing hock pain, lameness and neuromuscular problems, the Balto[®] Hock is also ideal for achilles injuries and orthopedic conditions, neurological conditions, pre/post-surgical immobilization, and contralateral support. Can be used as an alternative when surgery isn't an option, and can also be used without splints for conditions such as arthritis and arthrosis.



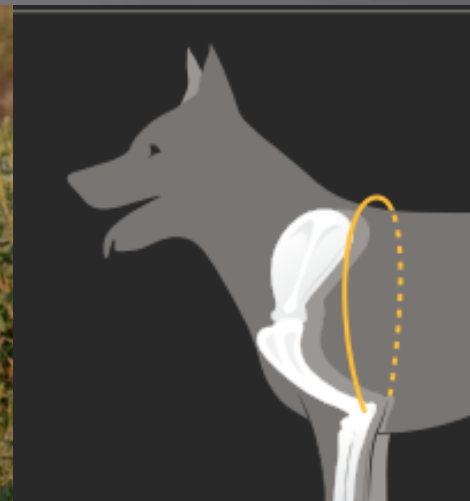
ITEM #	SIZE	WEIGHT	A	B
BTHOCKXXS	XXS	2 - 5kg	9.5cm	4.5 - 7cm
BTHOCKXS	XS	5 - 8kg	11cm	6 - 8cm
BTHOCKS	S	8 - 25kg	12.5cm	8 - 11cm
BTHOCKM	M	25 - 35kg	14.5cm	11 - 13cm
BTHOCKL	L	35 - 50kg	15.5cm	13 - 15cm
BTHOCKXL	XL	50+ kg	16cm	14 - 16cm

MEASUREMENT A: Circumference of tibia
MEASUREMENT B: Circumference of metatarsus



Balto® Soft

The Balto® Soft is designed to assist with patients suffering from a number of elbow conditions including hygromas, sores and calluses, arthritis, arthrosis, and elbow dysplasia. The Balto® Soft Plus is also available for cases that require bilateral elbow support or restriction.



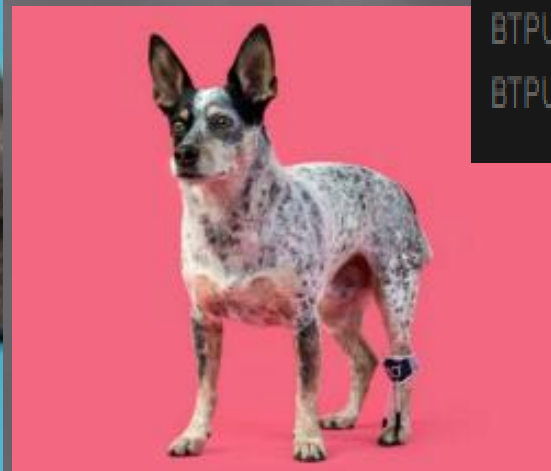
ITEM #	SIZE	WEIGHT	LENGTH
<i>Balto® Soft - Left</i>			
BTSOFTSL	S	4 - 10kg	35 - 45cm
BTSOFTML	M	12 - 18kg	41 - 70cm
BTSOFTLL	L	20 - 45kg	55 - 90cm
BTSOFTXLL	XL	45+ kg	80 - 115cm
<i>Balto® Soft - Right</i>			
BTSOFTSR	S	4 - 10kg	35 - 45cm
BTSOFTMR	M	12 - 18kg	41 - 70cm
BTSOFTLR	L	20 - 45kg	55 - 90cm
BTSOFTXLR	XL	45+ kg	80 - 115cm
<i>Balto® Soft Plus - Bilateral</i>			
BTSOFTDELS	S	4 - 10kg	35 - 45cm
BTSOFTDELM	M	12 - 18kg	41 - 70cm
BTSOFTDELL	L	20 - 45kg	55 - 90cm
BTSOFTDELXL	XL	45+ kg	80 - 115cm

LENGTH: Distance from the elbow to the opposite elbow when measured over the back



Balto® Pull

Brace for Phalanges Hyperflexion The Balto® Pull addresses neurological disorders that cause severe proprioceptive deficits, such as dorsiflexion, where a dog is unable to sense the position of its limb on the ground, causing it to stand on the top of its paw. It can also be used when dealing with damage to the sciatic nerve to prevent injury due to shortening of the flexor tendons of the paw.



ITEM #	SIZE	WEIGHT
BTPULLXXS	XXS	1 - 5kg
BTPULLXS	XS	5 - 10kg
BTPULLS	S	10 - 20kg
BTPULLM	M	20 - 40kg
BTPULLL	L	40+ kg



Balto® Lux

Shoulder Brace Balto® Lux The Balto® Lux is designed to limit the overall abduction of the shoulders. Aids in minor issues as well as shoulder diseases that require limited movement of the joint. It can also be used as a post-operative device to promote gradual rehabilitation. It is recommended for issues such as instability of the shoulder joint, shoulder dysplasia, joint laxity or hypermobility, dislocation, and inflammation.



ITEM #	SIZE	WEIGHT
BTLUXS	S	10 - 19kg
BTLUXM	M	20 - 49kg
BTLUXL	L	50 - 80kg



Balto® Life

Hip Dysplasia Brace

The Balto® Life is ideal for dogs with all degrees of hip dysplasia, relieving pain by providing bilateral hip compression via two rigid disks lined with a double layer of soft material. The brace features adjustable, removable handles to help pets with limited mobility.

It can be used as an alternative when surgery isn't an option, though it is not recommended to use in place of surgery.

ITEM #	SIZE	CIRC.
BTLIFEXS	XS	15 - 20cm
BTLIFES	S	25 - 30cm
BTLIFEM	M	30 - 35cm
BTLIFEL	L	40 - 45cm
BTLIFEXL	XL	50 - 55cm

CIRCUMFERENCE:

Circumference of the upper thigh



Balto® Body Lift

Body Harness with Handles

The Balto® Body Lift is a solution for dogs with difficulty walking due to trauma, disease, or paralysis. The brace can also be used to support and compress the spinal column via two removable, rigid splints contained within the brace's side pockets.

Features length adjustable handle straps and a padded grip, allowing even large dogs to be lifted with ease.

ITEM #	SIZE	LENGTH
BTBODYXS	XS	25 - 32cm
BTBODYXS	XS	25 - 32cm
BTBODYS	S	33 - 39cm
BTBODYM	M	40 - 49cm
BTBODYL	L	50 - 59cm
BTBODYXL	XL	60+ cm

LENGTH: Measure the distance from the shoulder to the thigh.



Balto® Up

Rear Harness Support

The Balto® Up provides mobility support for dogs with arthritis, osteoarthritis, hip dysplasia, and full or partial hind leg paralysis. Two rigid splints provide the firm stability needed for owners to help their dogs continue day to day activities, such as walking or climbing up and down stairs.

Features an easy-to-use, height adjustable handle.

ITEM #	SIZE	CIRC.
BTUPXS	XS	15 - 20cm
BTUPS	S	25 - 30cm
BTUPM	M	30 - 35cm
BTUPL	L	40 - 45cm
BTUPXL	XL	50 - 55cm

CIRCUMFERENCE:

Circumference of the upper thigh



Balto® Off-Road



Adjustable Orthopedic Wheelchair Balto® Off-Road Balto® Off-Road provides support for dogs with impaired mobility due to pathologies or mature age. Among the various conditions are hip dysplasia, degenerative myelopathy, rear legs' severe osteoarthritis, neurological problems, and hind joints deficiency impeding self-support. The wheelchair is made of anodized aluminum, and it is lightweight, resistant, and exceptionally stable. Balto® Off-Road is available in three sizes, and it is fully adjustable in width, height, and length. Adjustable supporting straps at the front provide an excellent fit for your dog while an X-shaped rear harness comfortably and securely holds your dog while the device is in use. The harness also facilitates solid and liquid ejection without dirtying the wheelchair (e.g. in case of incontinent dogs).

ITEM #	SIZE	WEIGHT		
BTOFFROADS	S	5 - 14 kg		
BTOFFROADM	M	15 - 26 kg		
BTOFFROADL	L	27 - 50 kg		
ITEM # (cont'd)	A	B	C	
BTOFFROADS	22 - 32cm	15 - 30cm	10 - 20cm	
BTOFFROADM	33 - 54cm	31 - 51cm	21 - 26cm	
BTOFFROADL	55 - 85cm	50+ cm	27 - 35cm	

MEASUREMENT A:

Distance from the shoulder to the center point of the thigh

MEASUREMENT B:

Height from the hip to the ground

MEASUREMENT C:

Width from leg to leg above the tail