

ELECTROCHEMOTHERAPY

Effective treatment of cutaneous tumors and margins after surgery



Dogs

Cats

Exotic Pets

Applicable for skin lesions

Squamous cell carcinomas

Melanomas

Mast cell tumors

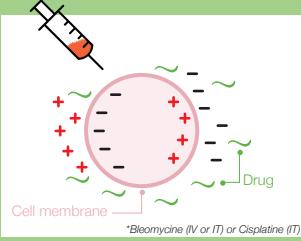
Perianal tumors

Sarcomas...



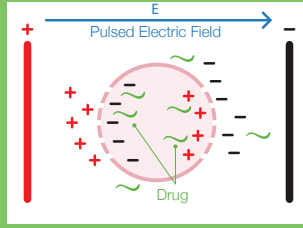
Principles of electrochemotherapy

1 Injection of anticancer drug*



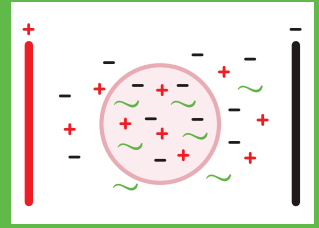
Rapid and significant increase of anticancer drugs in tumor cells

2 Application of electrical pulses



Used on its own, before, during or after surgery or radiotherapy

3 Drugs remain trapped in the cells



Vascular lock in tumor vessels



Electrochemotherapy session

(On average, a 20-minute process)

- 1 General anesthesia ensures the security of the patient and the practitioner
- 2 Injection of chemotherapy
- 3 Application of electrical pulses with ELECTROvet
- 4 Follow up 2 weeks after electrochemotherapy session



More than 280 ELECTROvets sold in 47 countries



More than 40 veterinary schools use an ELECTROvet



Electroporator manufacturer since 2009

95% of DVMs* consider electrochemotherapy **more effective** than surgery to treat squamous cell carcinoma
**Survey conducted in December 2020 among 100 veterinarians using ELECTROvet.*

87.9% complete response on **perianal tumors** at 1 year
(Tozon, 2010)

87.5% complete response on nodules at 3 years for treatment of **squamous cell carcinoma** in cats

Squamous Cell Carcinoma

Bleomycin IV • L-shape contact electrode

Dr. Anca Cristea

Oncovet Romania
oncovet.ro



Day 0. Before 1st session



Day 7. 7 days after 1st session



Day 14. Before 2nd session



Day 28. After 2nd session

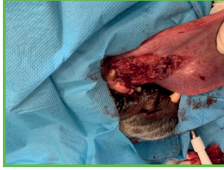
Sublingual Squamous Cell Carcinoma

Bleomycin IV • 15mm needle electrode

Dr. Pascual de Rojas Zabala

Universidad CEU
Cardenal Herrera
www.uuchceu.es

Day 0.
Before 1st session



Day 60.
60 days after 1st session



Squamous Cell Carcinoma

Bleomycin IV • 15mm needle electrode

Dr. Luis Feo

Hospital Ars Veterinaria
arsveterinaria.es



Day 0. Before 1st session



Day 7. 7 days after 1st session



Day 30. After 2nd session



Day 60. After 2nd session
+ surgery

Oral Melanoma

Bleomycin IV • 15mm needle electrode

Dr. Claudia de la Riva

Oncomascotas
oncomascotas.es



Day 0. Before 1st session



Day 15. 15 days after 1st session



Day 30. After 1st session

Squamous Cell Carcinoma

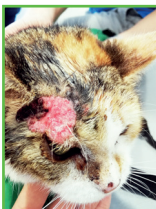
Recurrence, surgically resected twice

Bleomycin IV • L-shape contact electrode

Dr. Orsolya Juhász

DUO-VET Kit
duovet.hu

Day 0.
Before 1st session



Day 21. 21 days after 1st session



Day 60.
After 1st session

ELECTROvet EZ 4.0

NEW

3-year
warranty

The most up-to-date device with uniquely advanced features based on 15 years of research, experience, and feedback.

The ELECTROvet EZ remains the easiest machine to perform ECT in your clinic.

Easy-to-use: press pedal both to load generator and deliver pulses - that's it!



- Delivers standard electrical protocol
- Foot-switch to charge & deliver pulses
- Editable parameters
- Alt settings button: Activates alternative electrode settings
- Intelligent system for evaluation of pulses delivery
- Log file of pulses delivered
- 16 GB USB stick included

CONTACT ELECTRODES



L-shaped contact electrodes

- 2 L-shaped electrodes
- 15 mm long
- Distance of 10 mm
- Autoclavable

Included in the starter pack



Plate electrodes

- Plate shape contact electrodes
- 35 mm long
- Distance of 8 mm
- Autoclavable

INVASIVE ELECTRODES



8 x 25 mm needle electrodes

- 2 rows of 4 needles
- Needles \varnothing 0,68 mm
- 25 mm long
- Distance of 5 mm
- Autoclavable



8 x 15 mm needle electrodes

- 2 rows of 4 needles
- Needles \varnothing 0,68 mm
- 15 mm long
- Distance of 5 mm
- Autoclavable



4 x 10 mm needle electrodes

- 2 rows of 2 needles
- Needles \varnothing 0,68 mm
- 10 mm long
- Distance of 4 mm
- Autoclavable



Nasal electrodes

- \varnothing 4mm
- 2 conductors
- 20 cm total length
- Gas sterilization only

Pack of 2 units



info@petline.gr



www.leroybiotech.com

leroy
BIOTECH