



Veterinary Table
VET LIFT STAINLESS STEEL
for treatment and surgery

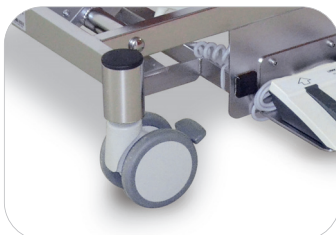
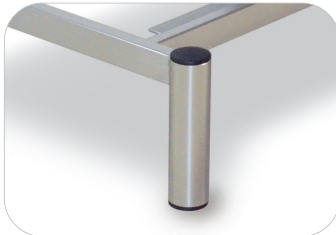
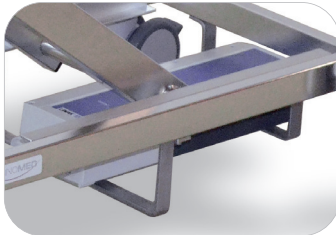




Veterinary Table
VET LIFT STAINLESS STEEL
for treatment and surgery



Technical details:



- MATERIAL: Stainless steel
- SURFACE: **Electrochemic polished**
 - High corrosion resistance
 - Metallic pureness and chemical passiveness
 - Optimal cleanability
 - Strongly reduced affinity to coating
 - plain and polished surface
- Powered by 230V 50HZz or BATTERY
- lift range from 31 to 101cm.
- Frame of high stability
- Tops: Stainless Steel 130 x 60cm with drain hole and 14 tie-down hooks
or Synthetic 130 x 60cm with drain hole and 14 tie-down hooks
- Castors: 2 small castors on one end allowing maximum stability and easy manoeuvrability for cleaning the floor.
or 4 large double castors with blocking mechanism
- tilting model may be tilted through to 11° by use of the pneumatic strut

VET LIFT **STAINLESS STEEL**

(fixed with small castors on one side)



TYPE

Item Code

electric height adjustable	
stainless steel top659.605
stainless steel tilting top659.606
synthetic top659.615
synthetic tilting top659.616
battery height adjustable	
stainless steel top679.605
stainless steel tilting top679.606
synthetic top679.615
synthetic tilting top679.616

VET LIFT **STAINLESS STEEL**

(moveable on castors, castors with blocking mechanism)



TYPE

Item Code

electric height adjustable	
stainless steel top659.601
stainless steel tilting top659.602
synthetic top659.611
synthetic tilting top659.612
battery height adjustable	
stainless steel top679.601
stainless steel tilting top679.602
synthetic top679.611
synthetic tilting top679.612