



IMAGINALIS

BEYOND IMAGING

***A JUMP INTO HDVI  
TECHNOLOGY***

# TECHNOLOGY

HDVI™ TECHNOLOGY

CONE BEAM CT TECHNOLOGY

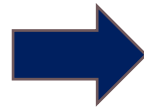
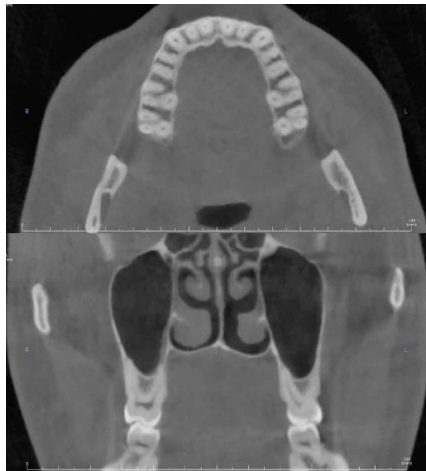


SPIRAL CT TECHNOLOGY

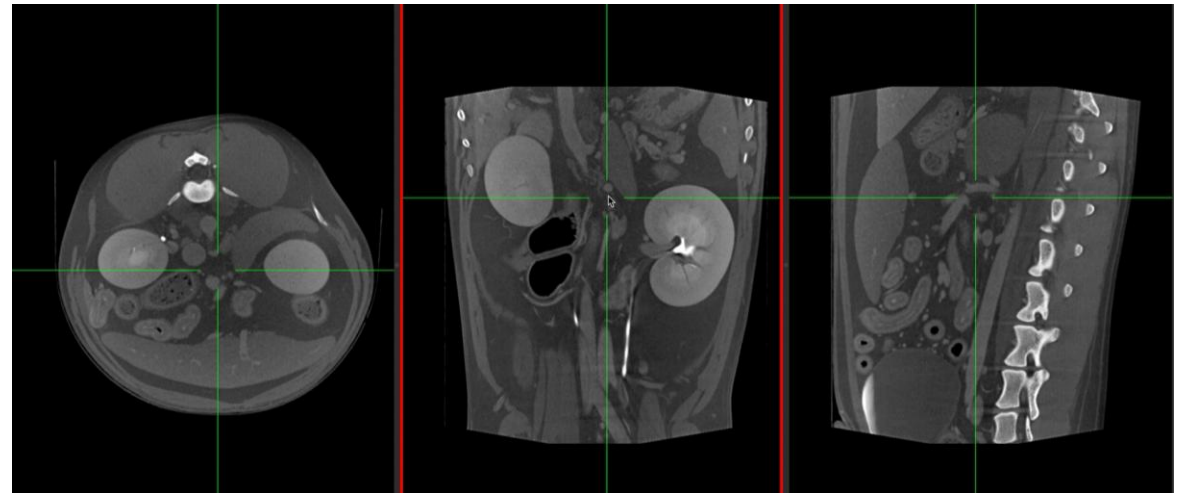
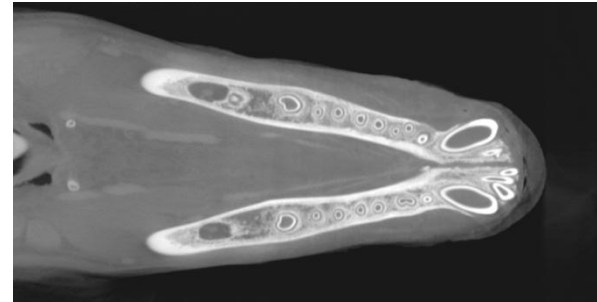


# TECHNOLOGY

CONE BEAM CT TECHNOLOGY



HDVI™ CT TECHNOLOGY



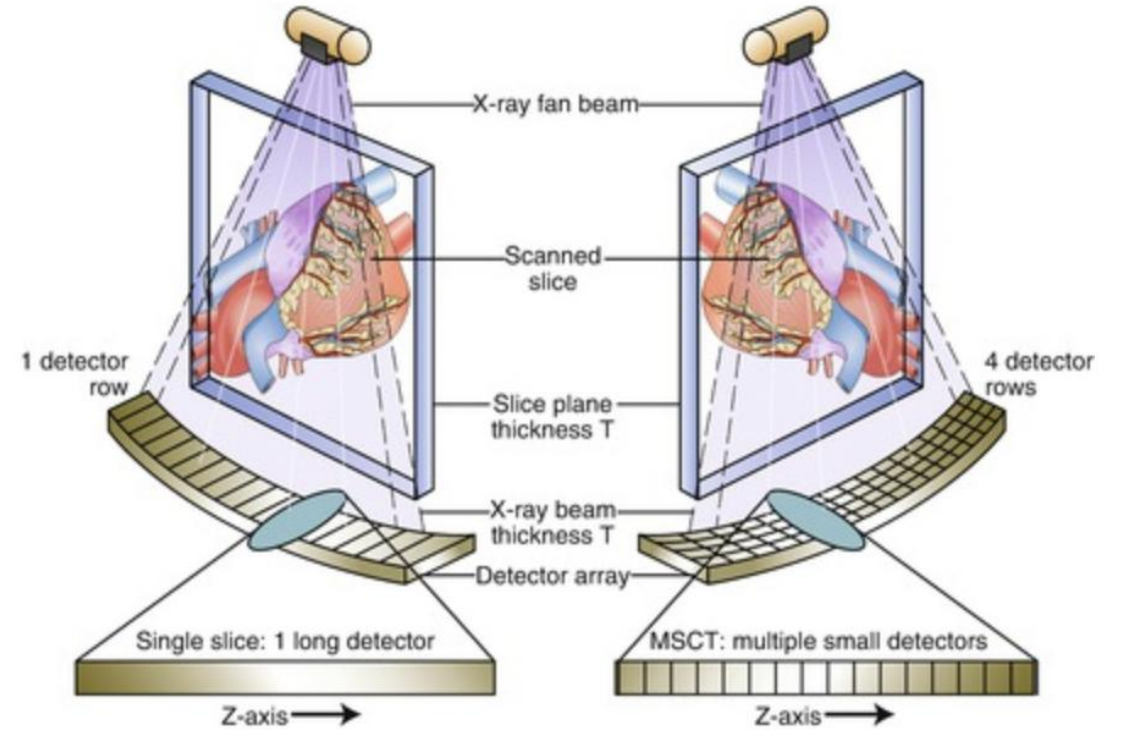
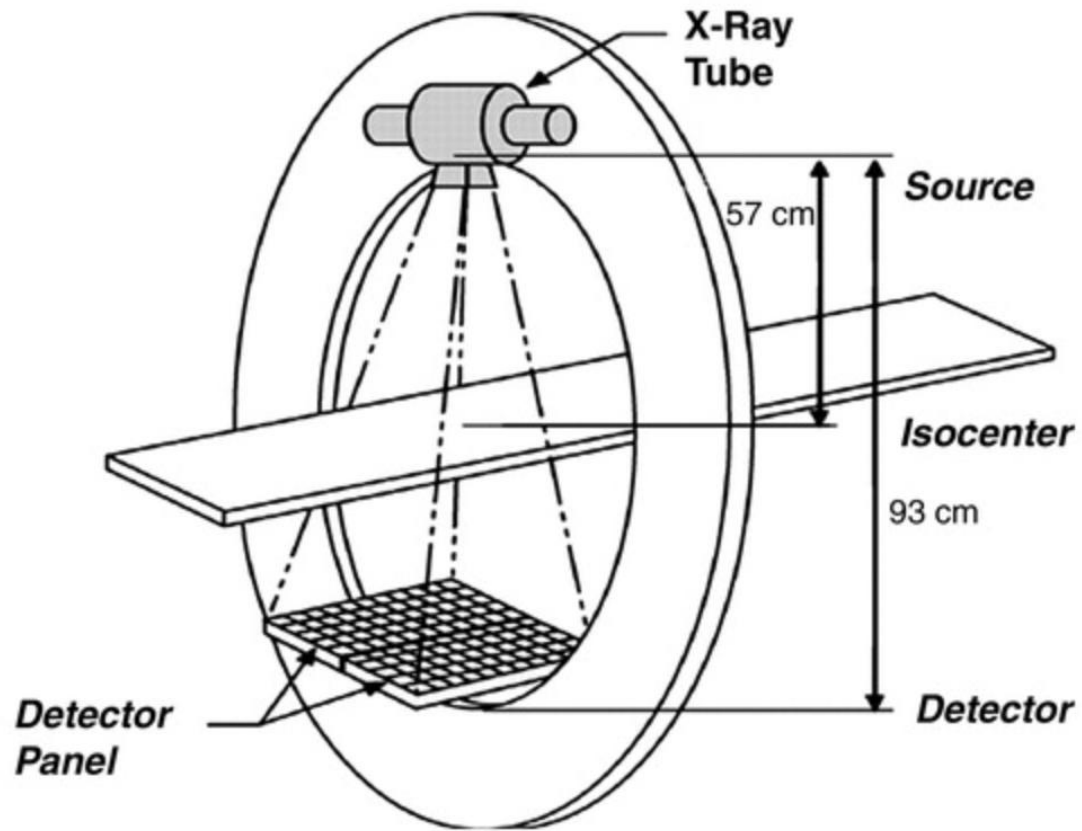
## **CONE BEAM CT TECHNOLOGY**

- **Use of the panel**
- **Very high spatial resolution**
- **High quality for teeth and bones**

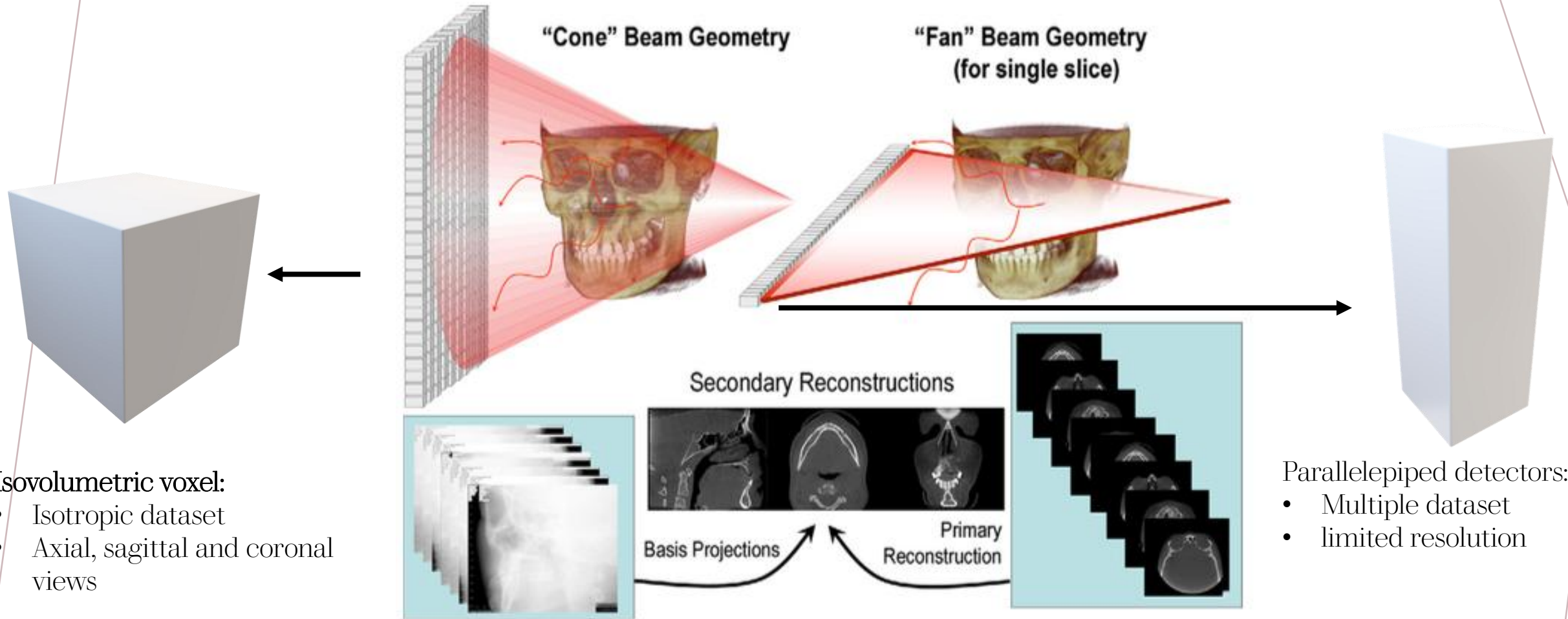
## **HDVI CT TECHNOLOGY**

- **Use of the panel**
- **Very high spatial resolution → 100 μ for Vimago, 70 μ for Exotica**
- **Gold standard for teeth and bones**
- **High image quality on of soft tissue**
- **Possibility to scan a total body**
- **Higher power generator**

# TECHNOLOGY



# TECHNOLOGY



# TECHNOLOGY

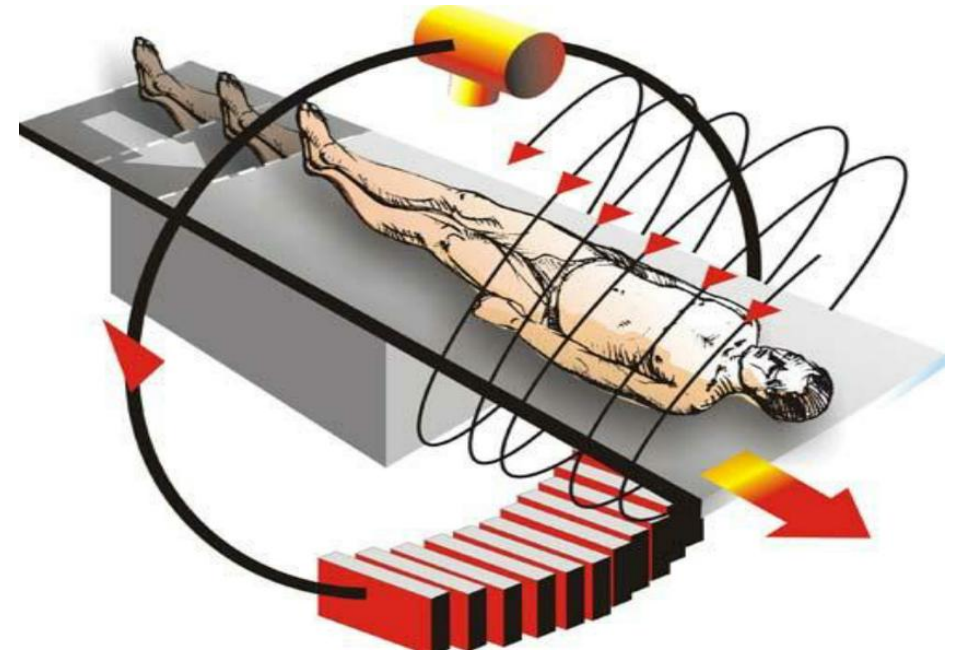
## Epica's HDVI-CT (Vimago GT30)

Full, un-collimated  
"Cone" Beam  
(same as DR)



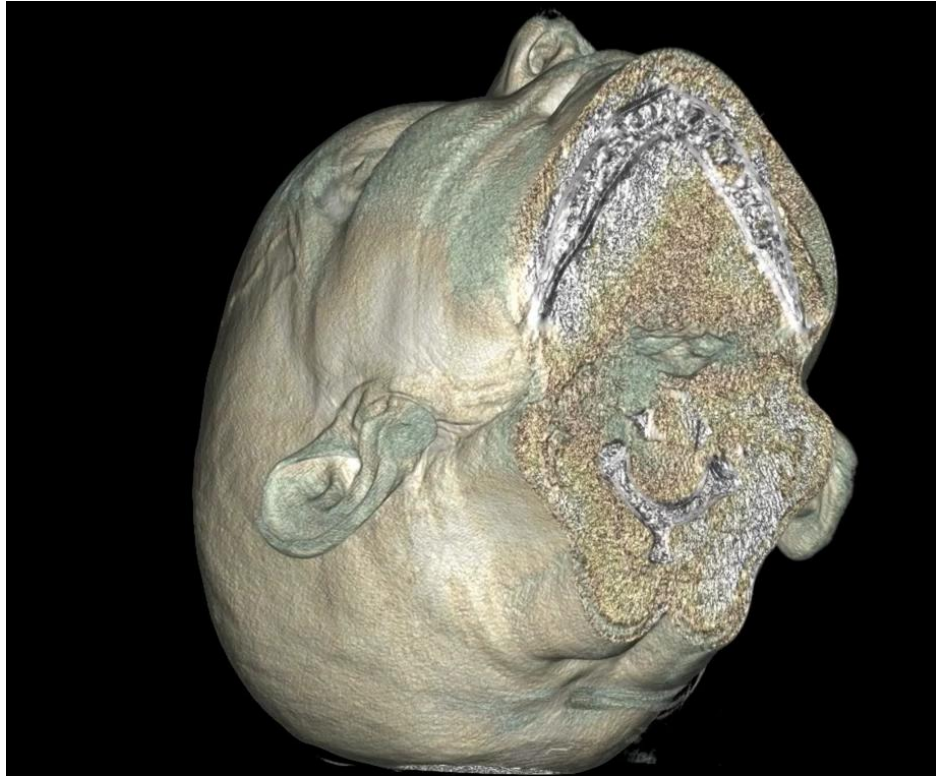
Cone Beam uses  
Flat Panel  
Detector

## Multislice CT Systems



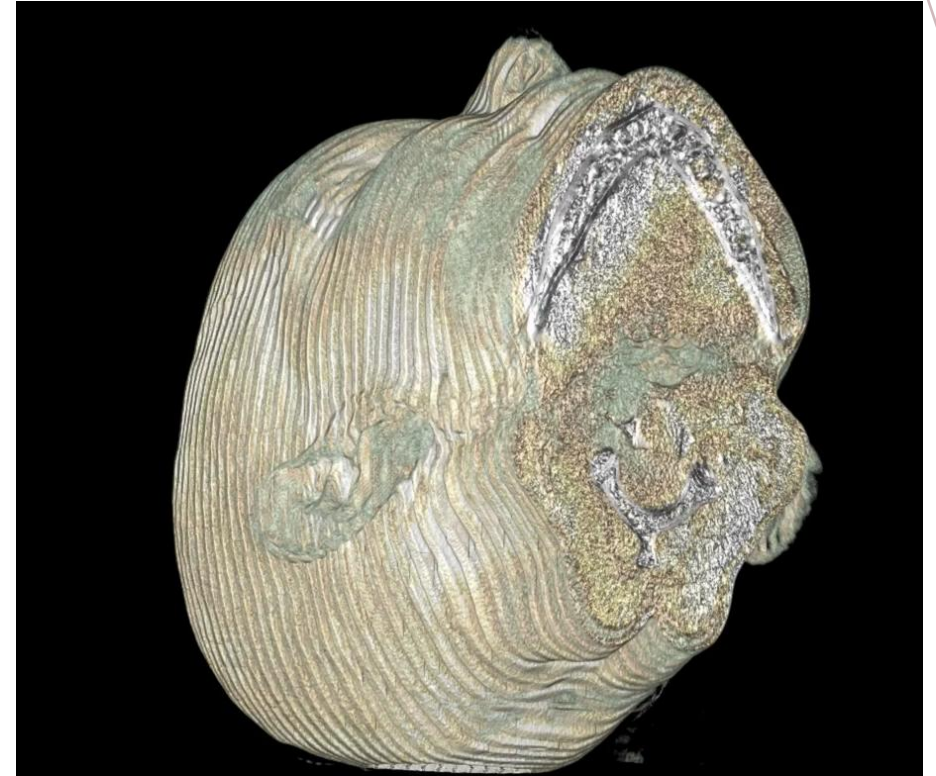
# TECHNOLOGY

## Epica's HDVI-CT (Vimago GT30)



- *Gapless, Volumetric Data with No Interpolation*

## Multislice CT Systems



- *Data Gaps require Interpolation*

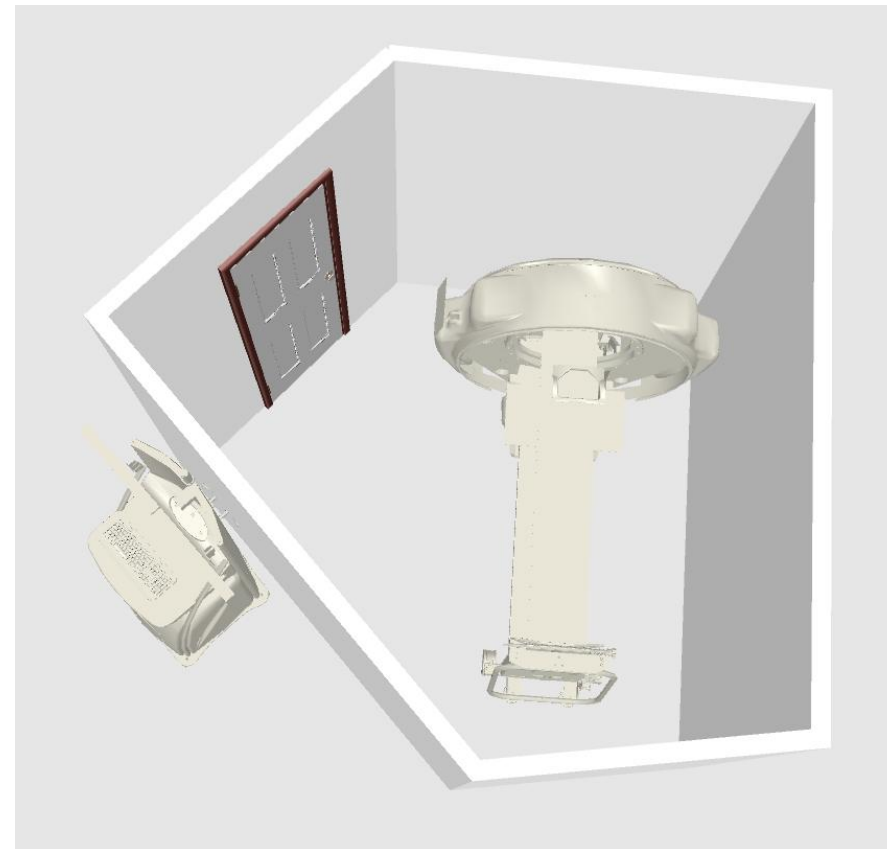
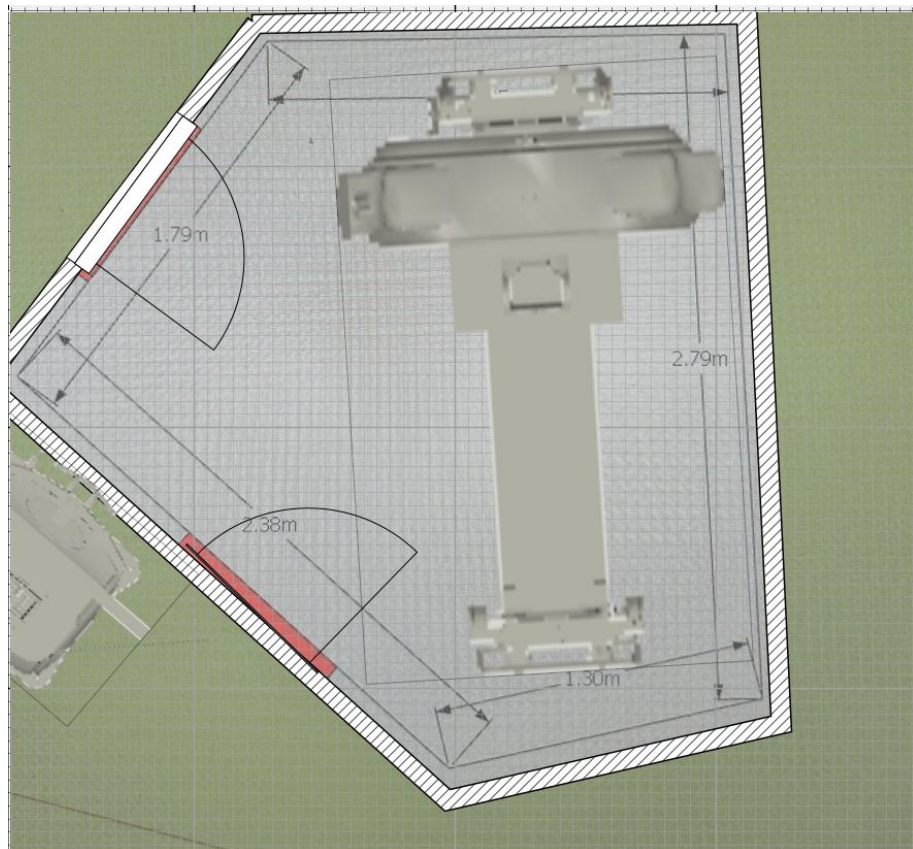
# VIMAGO GT30 AND PICO



- 3 in 1: CT + FL + DR
- Up to **7 Stacks** (105 cm total body) **Vimago**
- Up to **5 Stacks** (75 cm) **Pico**
- 1 Stack is **15 cm**
- 1 Stack in **11-24 seconds**
- Standard **FOV** is 17,5 cm
- Large **FOV** is 30 cm
- Output Dicom Resolution: **100-600 μm**
- X-Ray tube voltage **50-120 kV**, **10-120 mA**, **5-10 ms**
- Scouting System



# SMALL FOOTPRINTS

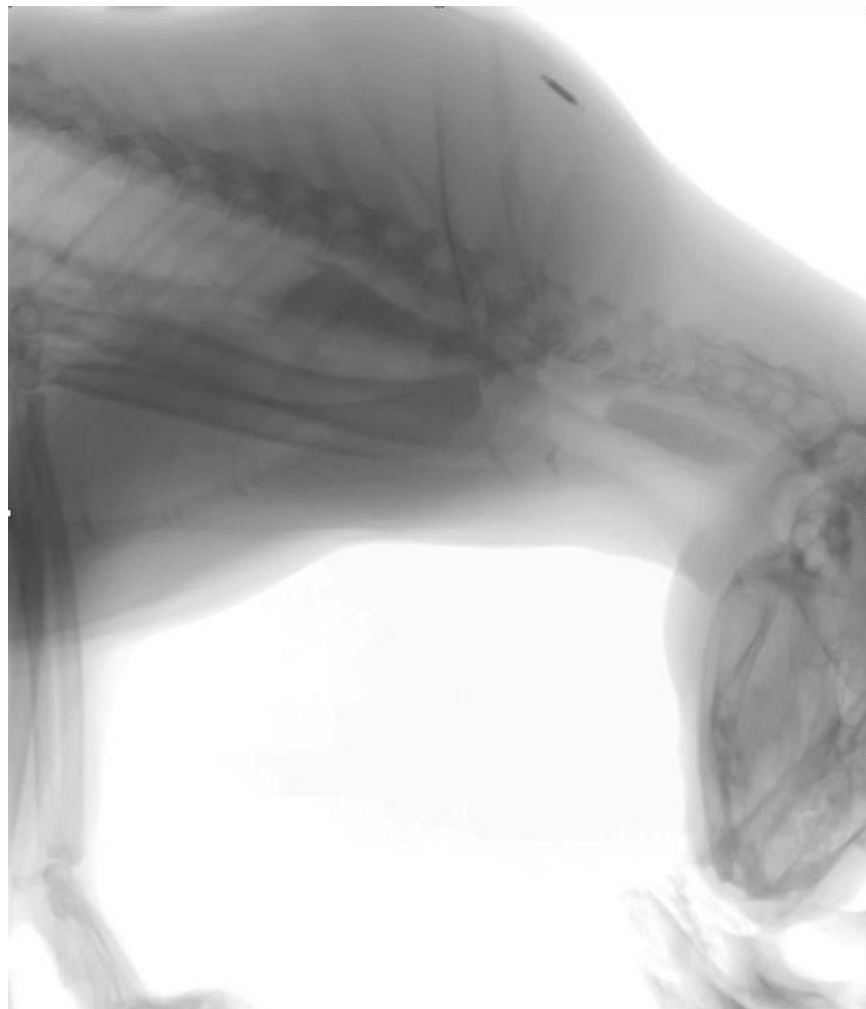


# ***EASY TO INSTALL***

- Mobility and Easy to Install: Can be moved through different rooms as it can pass through standard sized doors of 80cm



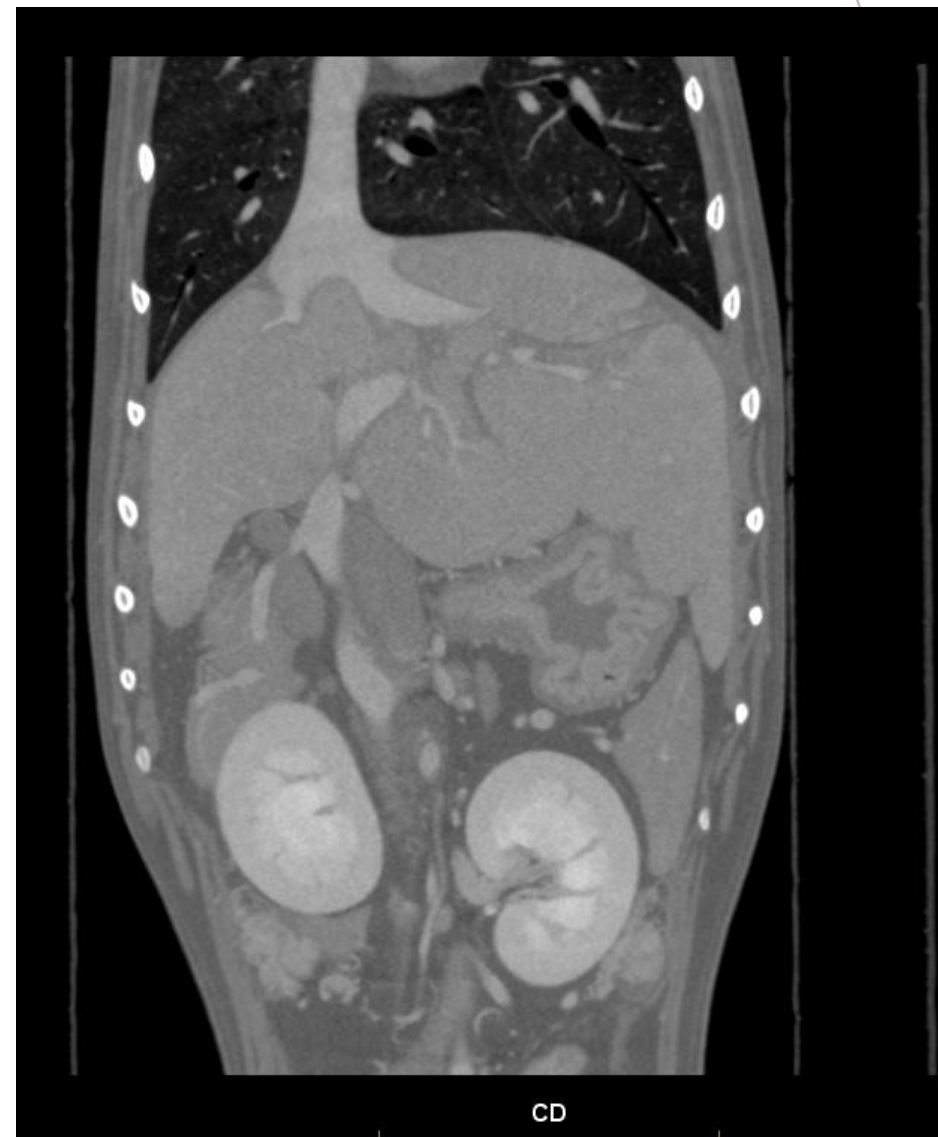
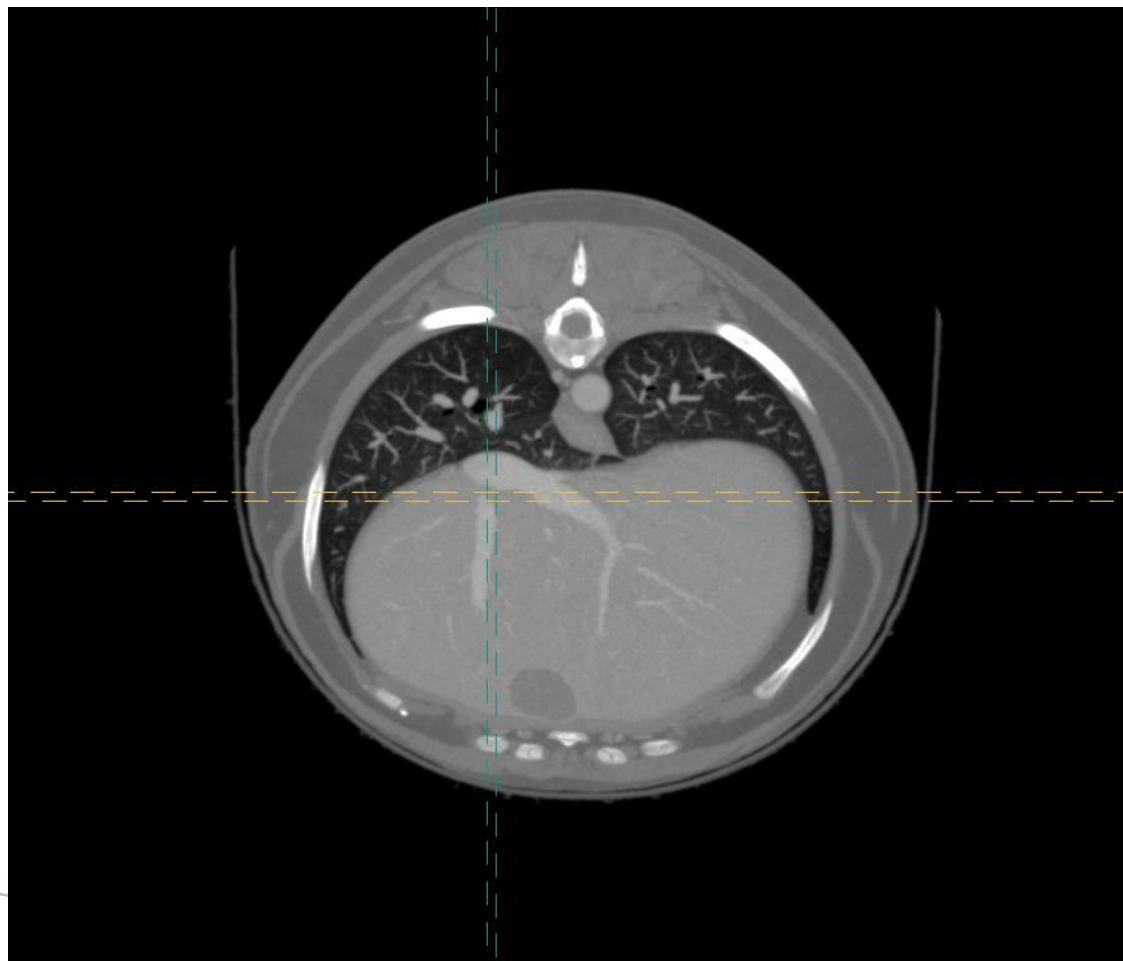
# ***MULTIMODALITY PLATFORM CT + FL + DR***

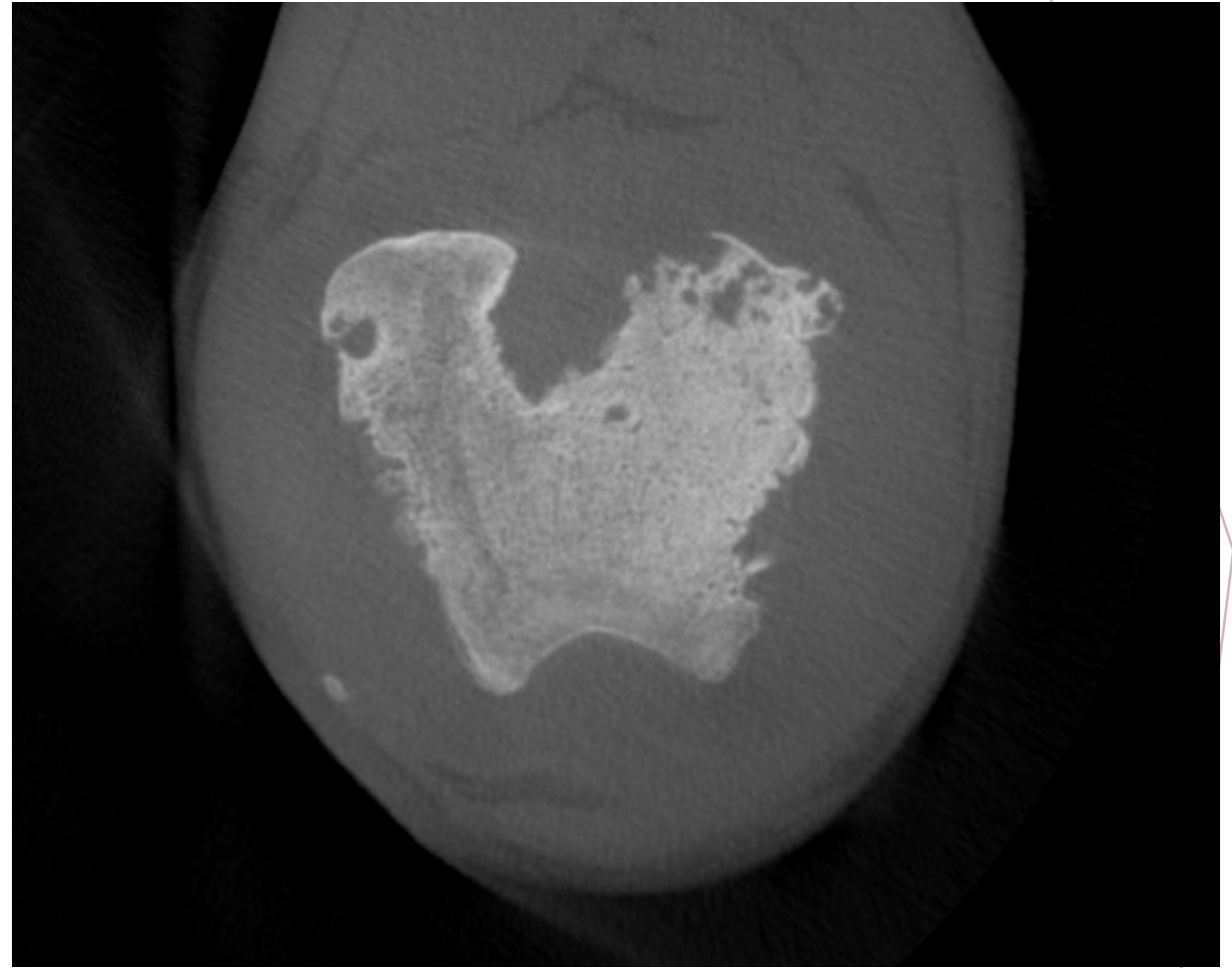
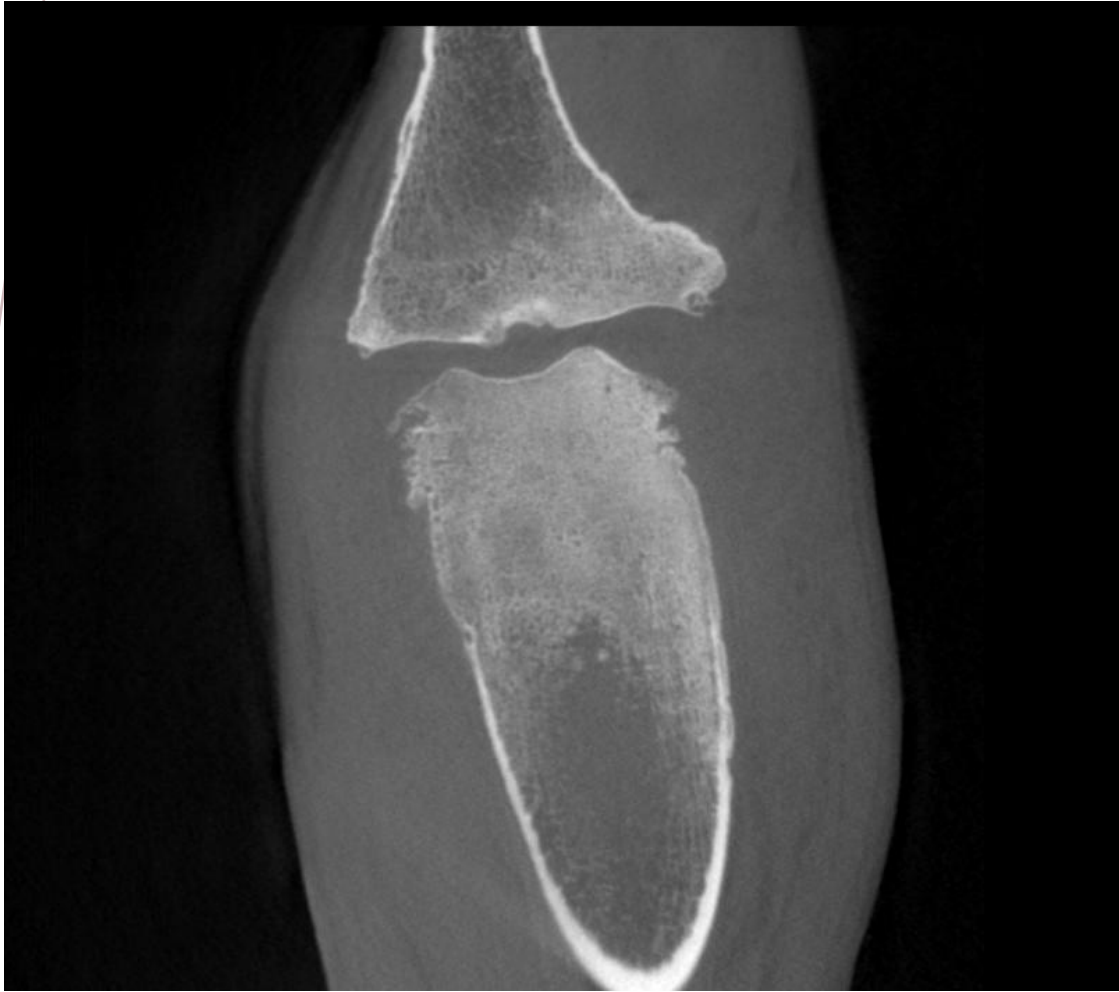


# ***INTRAOPERATIVE USE***



# HIGH IMAGE QUALITY







## SMALL ANIMALS



Vimago GT30



Pico GT30



Exotica



Oris



Pegaso Evolution



Centauri

# LARGE ANIMALS



Oceania



Savana

# NAVIGATION AND VISUALIZATION



# A SMART CHOICE

- less cost of installation
- less cost of electricity → pulsed radiation
- less cost of maintenance
- Small footprints
- CT for every species
- User Friendly
- Used in DIAGNOSTIC + SURGERY
- Combines CT + FL + DR
- Safer for staff and patients: less radiation 25%-75%

SPECIFICALLY DESIGNED FOR VET

# IMAGINALIS

BEYOND IMAGING

*THANK YOU!*

