

# D5VET

High-End Compact Veterinary  
Color Doppler Ultrasound Diagnostic System  
A Smart and Easy-to-Use Device to Care for Animals



VINNO

# D5VET

“

VINNO D5-VET is a highly integrated smart solution with a cutting-edge structure designed to provide the portability required by veterinary professionals in various scenes. It is built on the revolutionary RF platform, to deliver abundant information and highly accurate images. It provides users with convenient and quick access to outstanding images, as well as professional scanning and analysis.

Thanks to the processing algorithms developed on a large amount of RF data, it provides images with ultra-high contrast and resolution. The platform also supports the next-generation digital broadband up to 25MHz and high-resolution beamformers, providing excellent processing performance with a high channel density.

”

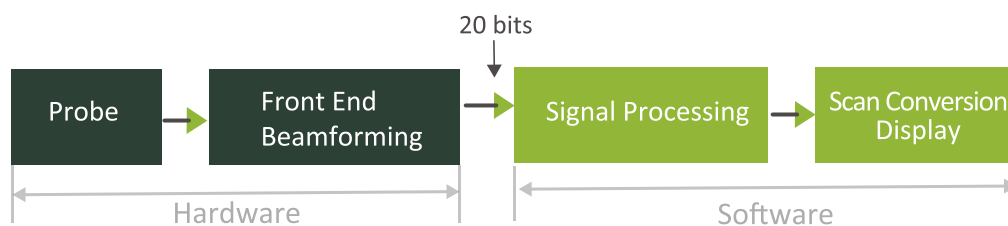


# Revolutionary Platform

The VINNO D5 VET Series is built on an innovative and simplified data platform that combines the traditional beamforming integration with front-end data processing. This innovative workflow enables convenient and institutive operations, making it an ideal choice for various scenarios.

## VINNO's Revolutionary RF Ultrasound Platform

RF signal data processing platform for better resolution and definition



# Superior Image Performance

### Speckle noise reduction (VSpeckle)

Based on the RF metadata platform, it integrates the detection data obtained by the system to produce superior images with higher contrast and clear boundaries.

### Fusion imaging (VFusion)

Sound beams are emitted from different directions, and reflected sound beams are matched through powerful processing capabilities to produce images with high signal-to-noise ratio on the monitor.

# A Cost-Effective Choice with High Performance



15.6-inch wide-angle LCD display panel



Wide viewing angle of up to 150 degrees



8-inch high-sensitivity touch screen that can be operated while wearing sterile gloves



One probe port can be expanded to three



Professional and seamless workflow with built-in soft keyboard and external keyboard, making user input much easier



Reasonable and convenient keyboard layout, supporting smoother operations

A portable veterinary ultrasound machine is shown on a white and black trolley. The machine has a monitor displaying a grayscale ultrasound image, a control panel with buttons and a trackball, and a keyboard. A dog is sitting in the foreground, looking towards the machine. The background is a bright, clean clinical setting.

## Outfitted with a dedicated and highly portable trolley

Facilitates device switching, supporting up to 3 probe connections. Supports more probes available

# FLYINSONO Remote Solution

VINNO provides users not only solid ultrasound system but also a Lifetime Continuous Learning Plan to always keep your edge sharp. Sign up for Remote Trainings with topics you're interested in, for further learning.

Furthermore, our service team is happy to support you for after-sales service remotely online. We will try our best to improve your user experience, all thanks to VINNO's exclusive FLYINSONO platform.



VINNO SYSTEM FLYINSONO

FLYINSONO

 Real-time consultation

 Time-sharing consultation

 Remote training

 Remote maintenance



**G2-5C**  
Broadband  
Curved Array

**Applications**  
Abdomen, Repro, Ovary



**F4-12LV**  
Broadband  
Linear Array

**Applications**  
Abdomen, Tendon,  
Small Parts, Eyes



**F2-5C**  
Broadband  
Curved Array

**Applications**  
Abdomen, Repro, Ovary



**G1-4P**  
Phased Array

**Applications-Cardiac**



**G4-9M**  
Broadband Micro  
Convex Array

**Applications**  
Abdomen, Cardiac



**G4-12LV**  
Broadband  
Linear Array

**Applications - Repro**



**G4-12P**  
Phased Array

**Applications - Cardiac**



**G3-10P**  
Phased Array

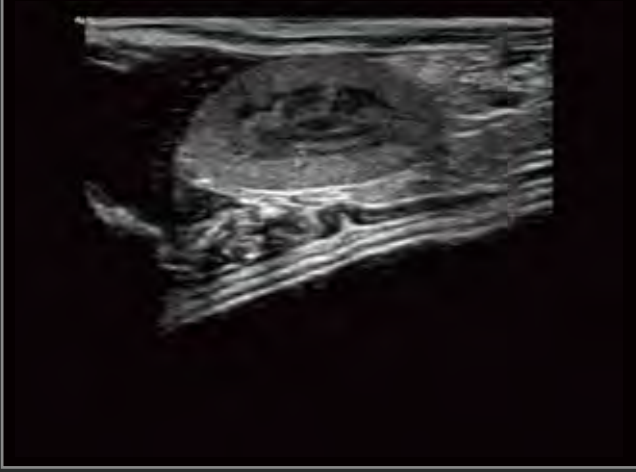
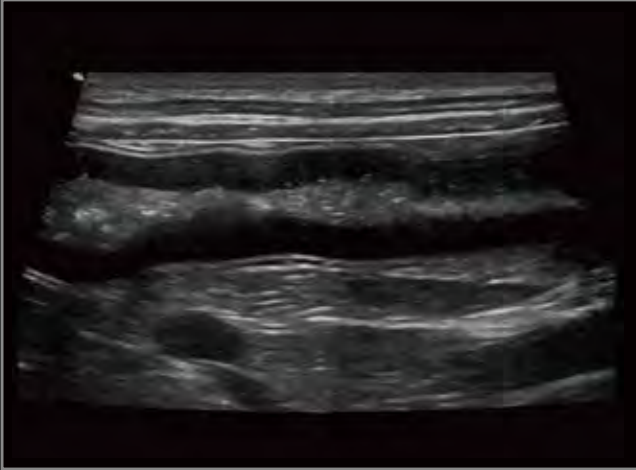
**Applications - Cardiac**

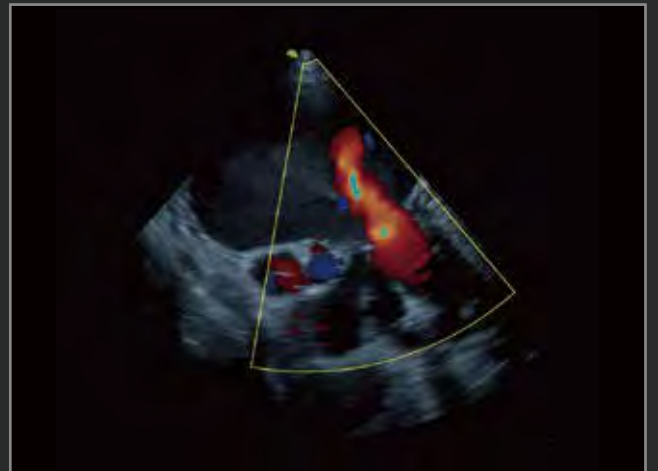
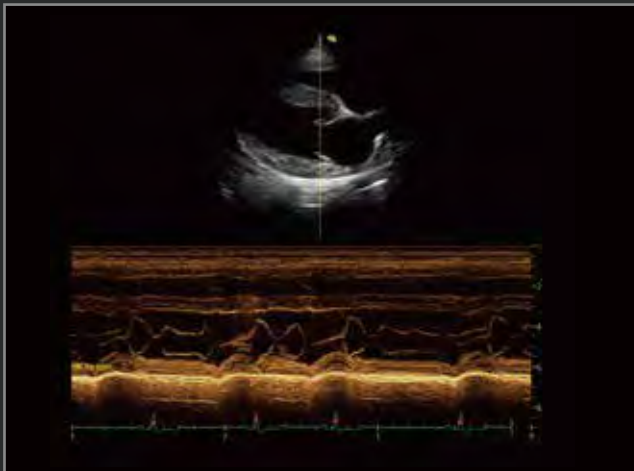
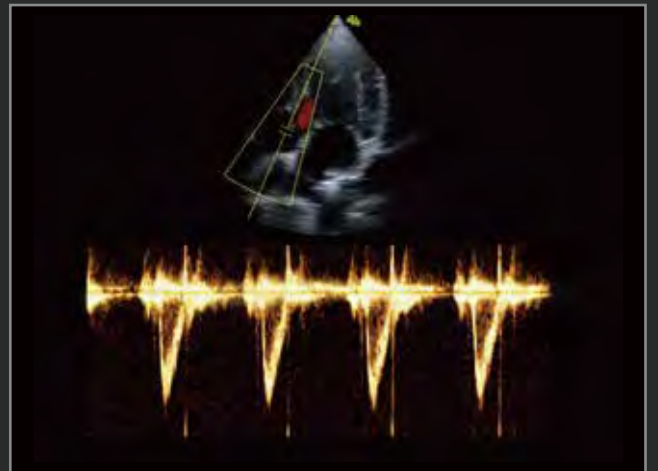






# Image Gallery







---

Για περισσότερες πληροφορίες  
επικοινωνήστε με:

