

DEVET

High-End Compact Veterinary
Color Doppler Ultrasound Diagnostic System
Excellent Performance and Advanced Experience for Animals



D6VET

“

VINNO D6-VET is a highly integrated smart solution with a cutting-edge structure designed to provide the portability required by veterinary professionals in various scenes. It is built on the revolutionary RF platform, to deliver abundant information and highly accurate images. It provides users with convenient and quick access to outstanding images, as well as professional scanning and analysis.

Thanks to the processing algorithms developed on a large amount of RF data, it provides images with ultra-high contrast and resolution. The platform also supports the next-generation digital broadband up to 25MHz and high-resolution beamformers, providing excellent processing performance with a high channel density.

”

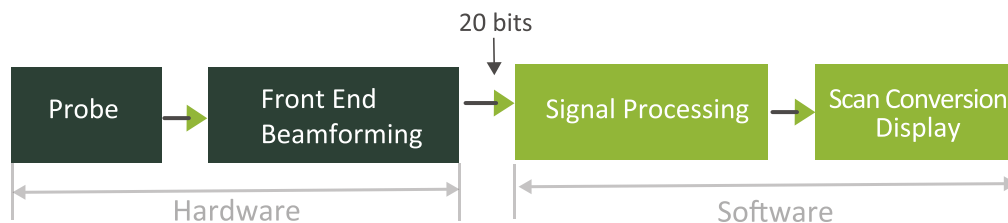


Revolutionary Platform

The VINNO D6 VET Series is built on an innovative and simplified data platform that combines the traditional beamforming integration with front-end data processing. This innovative workflow enables convenient and institutive operations, making it an ideal choice for various scenarios.

VINNO's Revolutionary RF Ultrasound Platform

RF signal data processing platform for better resolution and definition



Superior Image Performance

Speckle noise reduction (VSpeckle)

Based on the RF metadata platform, it integrates the detection data obtained by the system to produce superior images with higher contrast and clear boundaries.

Fusion imaging (VFusion)

Sound beams are emitted from different directions, and reflected sound beams are matched through powerful processing capabilities to produce images with high signal-to-noise ratio on the monitor.

A Cost-Effective Choice with High Performance



15.6-inch wide-angle LCD display panel



Wide viewing angle of up to 150 degrees



8-inch high-sensitivity touch screen that can be operated while wearing sterile gloves



One probe port can be expanded to three



Professional and seamless workflow with built-in soft keyboard and external keyboard, making user input much easier



Reasonable and convenient keyboard layout, supporting smoother operations

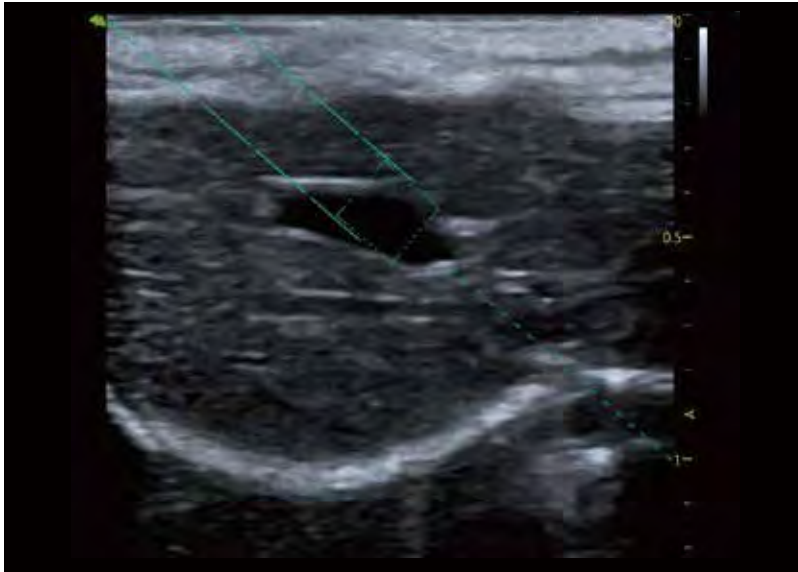
Outfitted with a dedicated and highly portable trolley

Facilitates device switching, supporting up to 3 probe connections. Supports more probes available



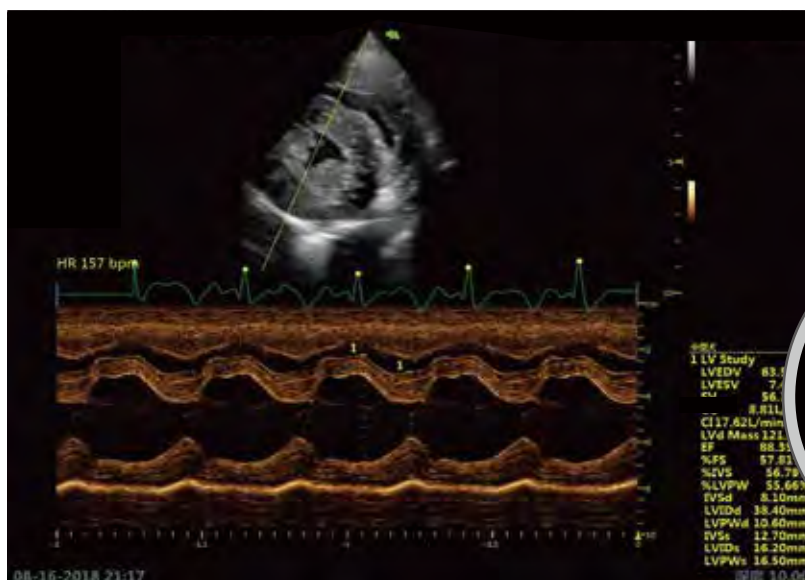
» VGuide

VINNO's VGuide technology behaves just like doctor's electronic eye to guide the biopsy accurately. Makes anaesthetic puncture operation visible, easy and precise.



» VCQ Function

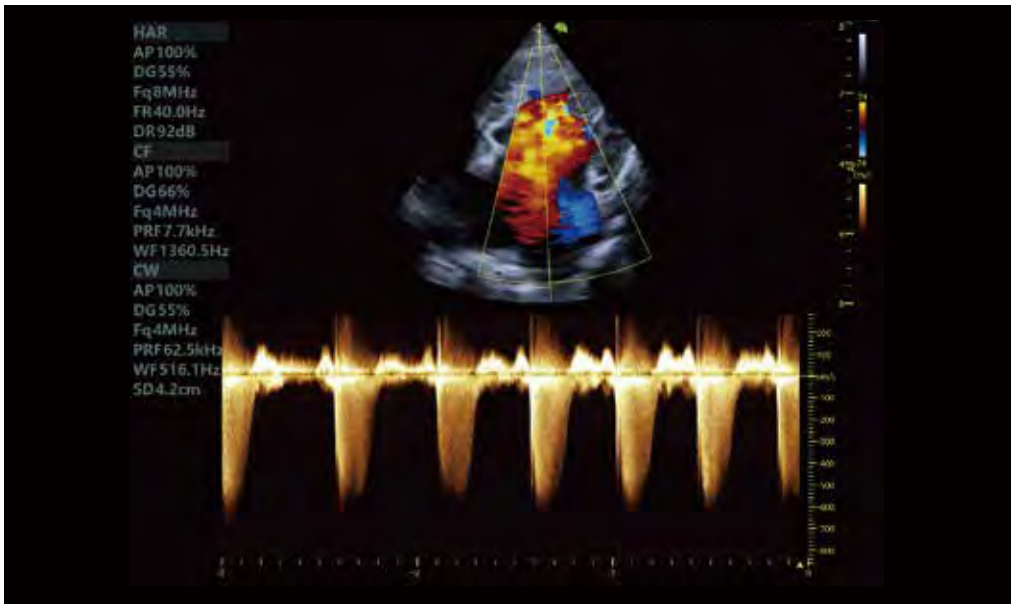
The function of the heart is automatically evaluated. Automatically evaluates the result of the cardiac measurement, by indicating the result whether it's above or below the normal value.



CI 17.62L/min.m² ↑
LVd Mass 121.13g
EF 88.35% ↑
%FS 57.81% ↑
%IVS 56.79%

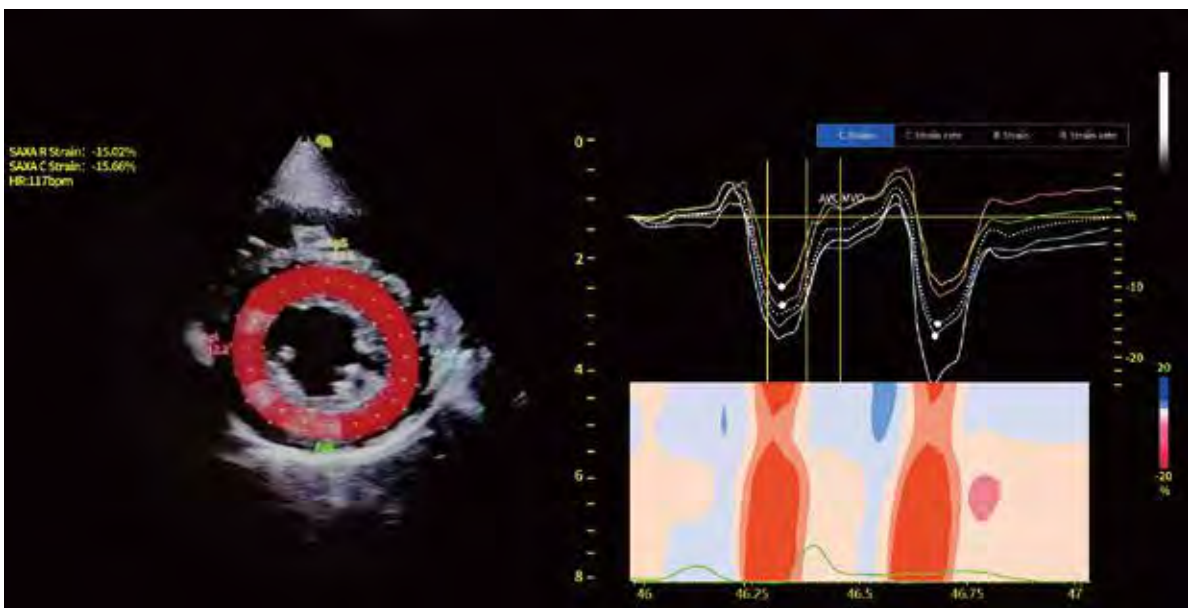
» Continuous Wave Doppler

Captures high-speed regurgitation beam and provides strong support for clinical diagnosis.



» Strain Imaging

Tracking imaging of myocardial tissue, a comprehensive dynamic real-time analysis tool.



FLYINSONO Remote Solution



VINNO provides users not only solid ultrasound system but also a Lifetime Continuous Learning Plan to always keep your edge sharp. Sign up for Remote Trainings with topics you're interested in, for further learning.



Furthermore our service team is happy to support you for after-sales service remotely online. We will try our best to improve your user experience, all thanks to VINNO's exclusive FLYINSONO platform.



VINNO SYSTEM FLYINSONO

FLYINSONO

-  Real-time consultation
-  Remote training

-  Time-sharing consultation
-  Remote maintenance



G2-5C Broadband Curved Array

- Applications: Abdomen, Repro, Ovary



F2-5C Broadband Curved Array

- Applications: Abdomen, Repro, Ovary



G4-12P Phased Array

- Applications - Cardiac



G1-4P Phased Array

- Applications: Cardiac, Abdomen



G3-10P Phased Array

- Applications - Cardiac



G4-9M Broadband Curved Array

- Applications: Abdomen, Cardiac



X6-16L Broadband Linear Array

- Applications: Abdomen, Tendon, Small Parts, Eyes



X4-12L Broadband Linear Array

- Applications: Abdomen, Tendon, Small Parts, Eyes



X10-23L Broadband Linear Array

- Applications: Abdomen, Superficial



X3-10L Broadband Linear Array

- Applications: Tendon



F4-12L Broadband Linear Array

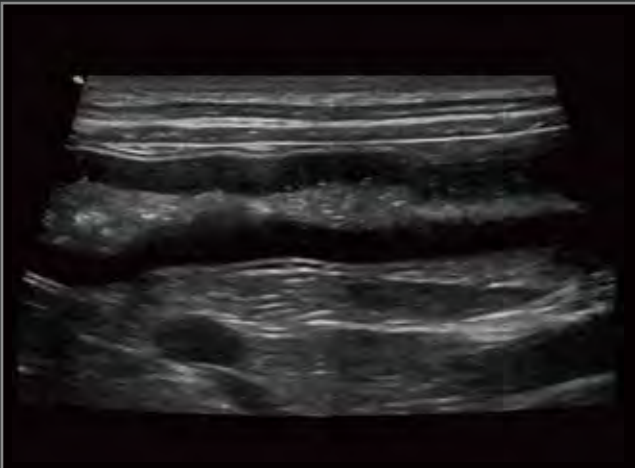
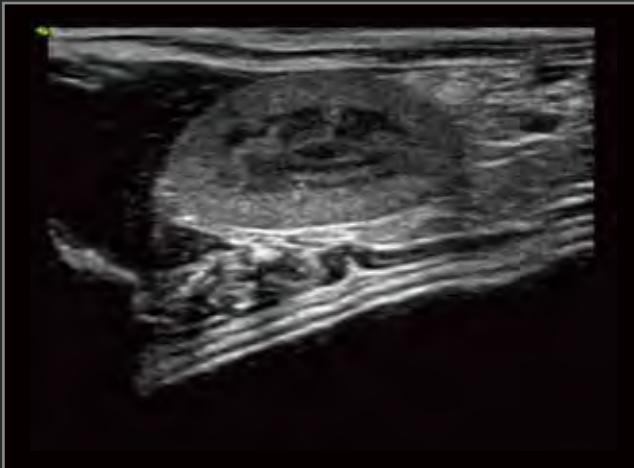
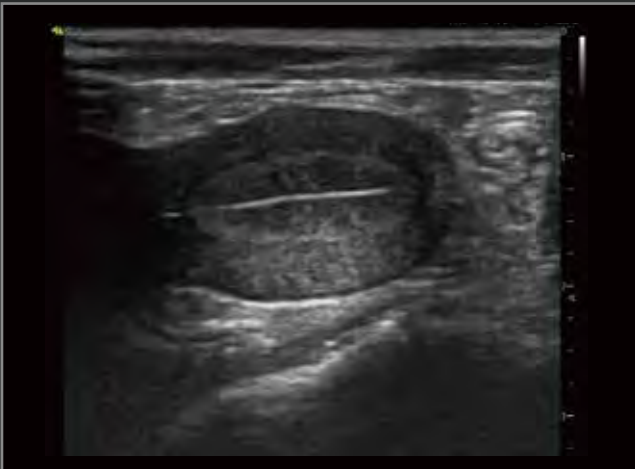
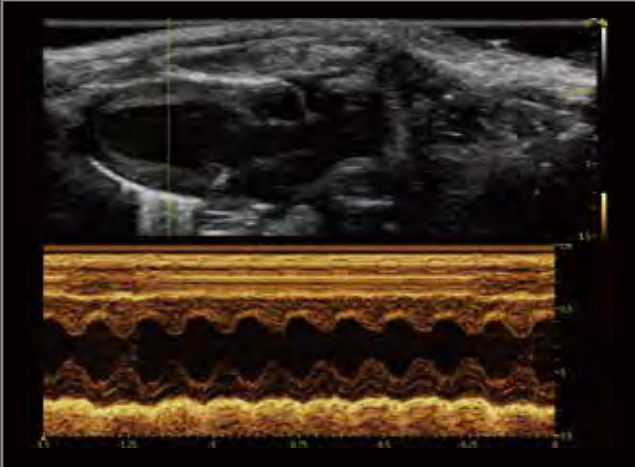
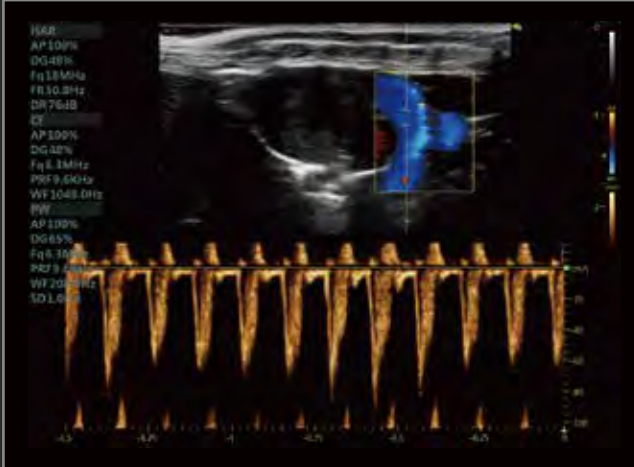
- Applications: Abdomen, Tendon, Small Parts, Eyes

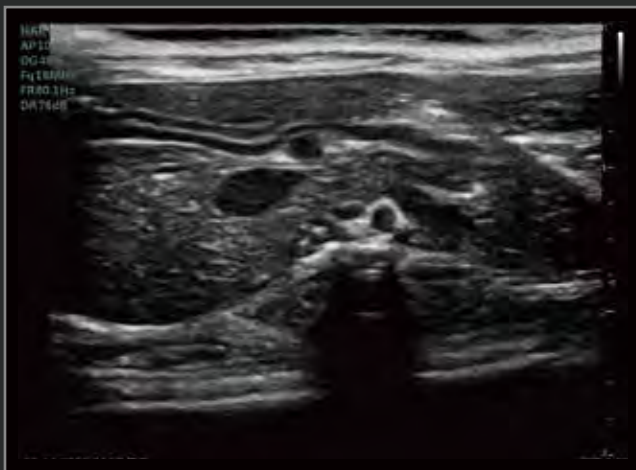
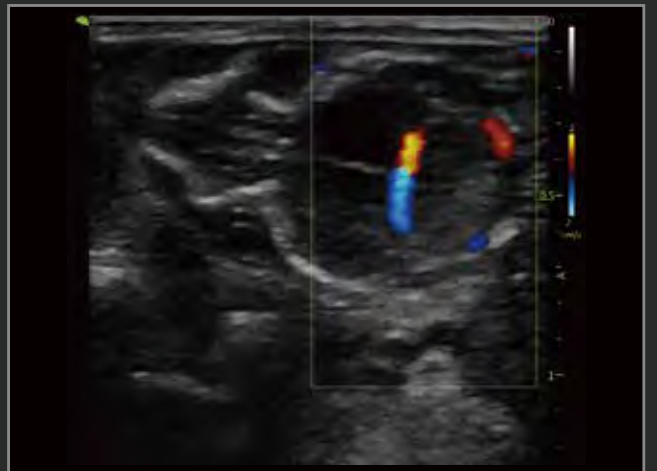
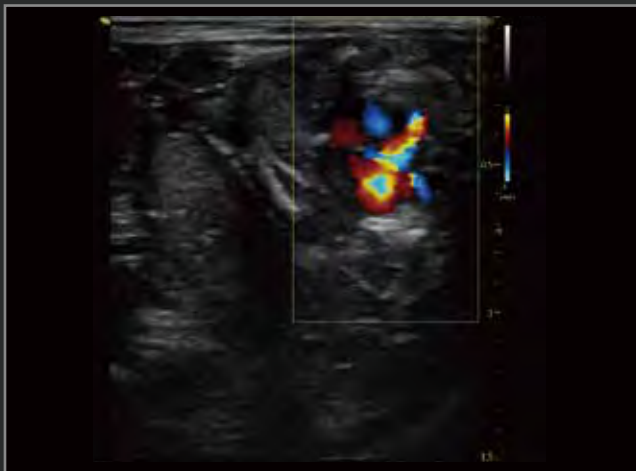
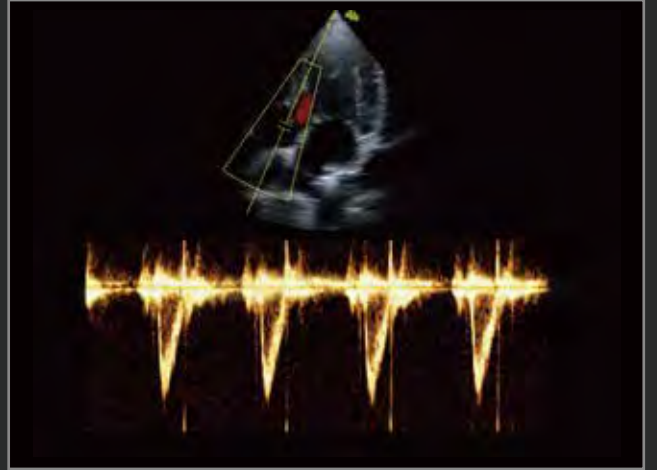


G4-12LV Broadband Linear Array

- Applications - Repro

Image Gallery







Για περισσότερες πληροφορίες
επικοινωνήστε με:

