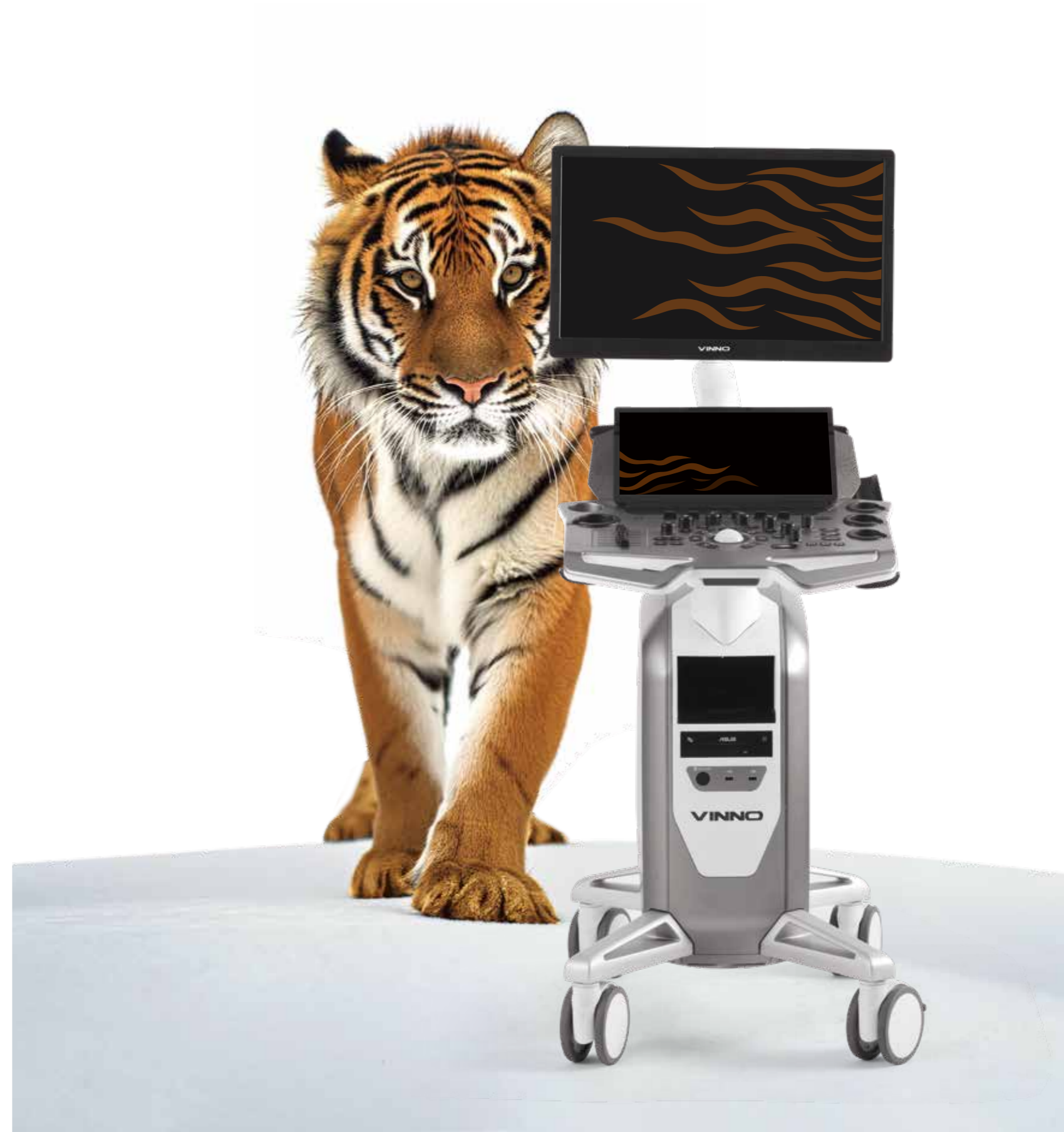


VINNO R700VET

Precision for Veterinary Excellence



VINNO Technology (Suzhou) Co., Ltd.

5F, A Building, No.27 Xinfu Rd, Suzhou Industrial Park, 215123, China

Tel: +86 512 62873806

Fax: +86 512 62873801

E-Mail: vinno@vinno.com

URL: www.vinno.com

VINNO reserves the right to make changes to product specifications at any time.





POWER INTELLIGENCE

Inspired by the strength and intelligence of the Siberian Tiger, R700VET takes veterinary care to the next level with unmatched precision.

Powered by the advanced VLucid+ platform and cutting-edge probe technology, R700VET excels in delivering superior cardiac imaging performance across all species, its intelligent features assist veterinary professionals by simplifying workflows and enabling quicker, more effective and confident diagnosis even in the most demanding diagnostic tasks.

R700VET is more than an ultrasound machine—it's your trusted partner in providing outstanding care for every animal.



Diagnostic confidence

Deliver precise and reliable diagnostics every time



Efficient Workflow

Streamline your daily routine with advanced automation



Intelligent Tools

Enhance your diagnostic capabilities with smart, AI-driven features



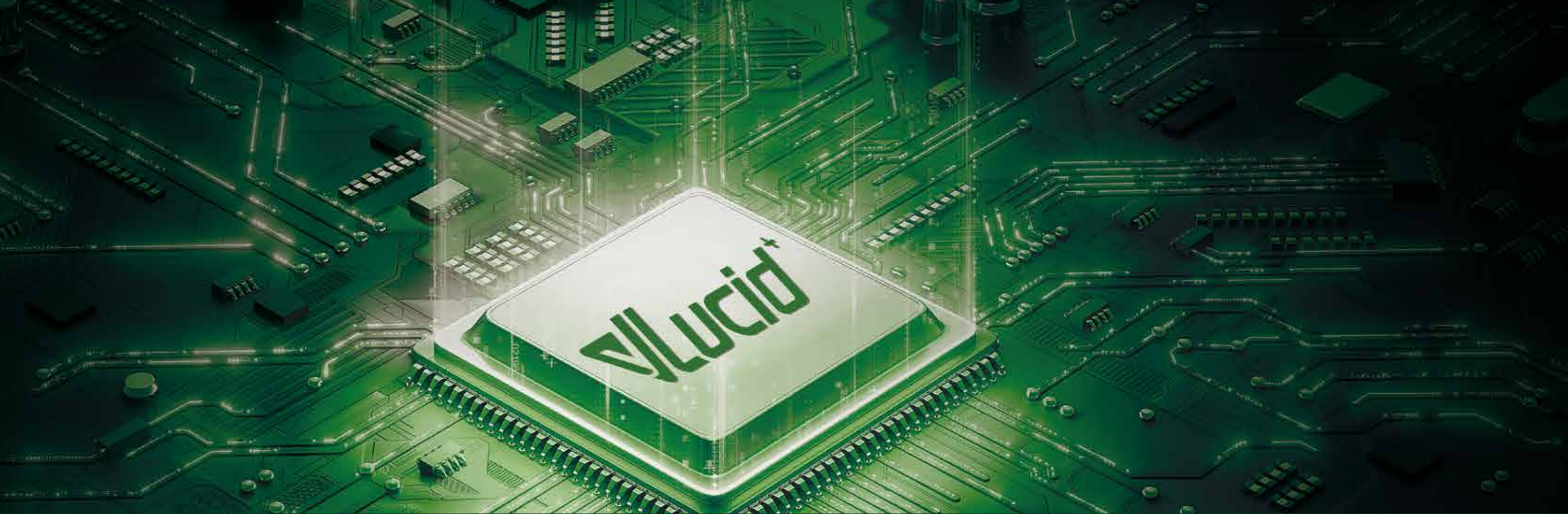
Designed for Veterinarians

Tailored specifically to meet the needs of veterinary professionals



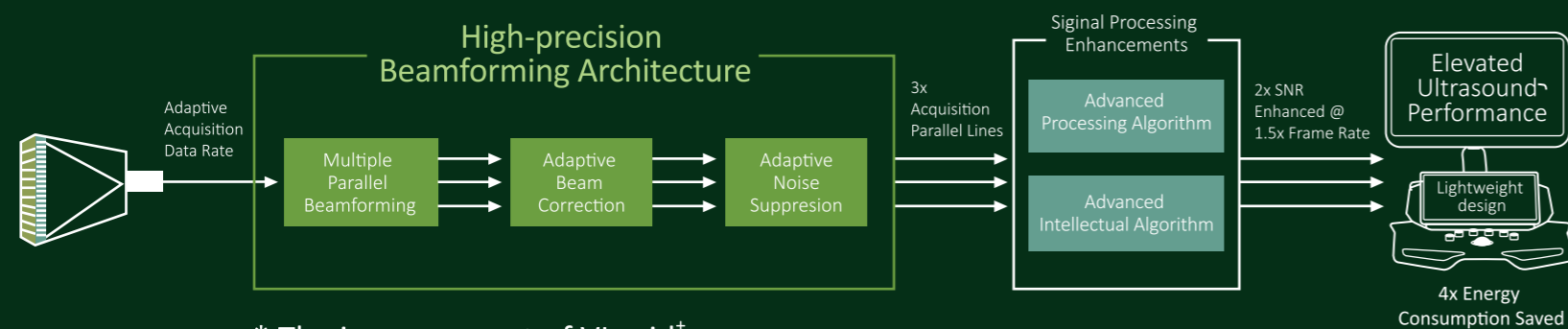
Battery Support

Ensure uninterrupted care with reliable battery power



Advanced Veterinary Imaging Performance

Powered by the VLucid+ platform, the VINNO R700VET redefines veterinary ultrasound with unmatched imaging clarity and color flow sensitivity, elevating animal care experience. It is designed to exceed the expectations of veterinary professionals, delivering a highly efficient and versatile imaging solution tailored for diverse animal care needs.

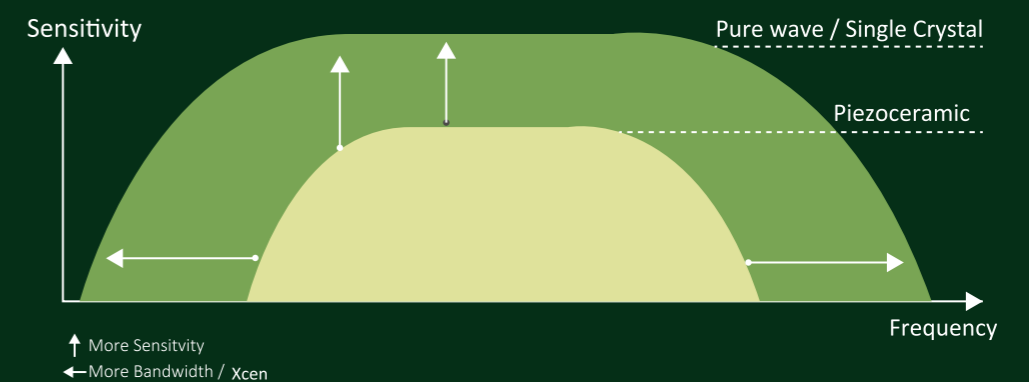


* The improvement of VLucid+

Enhance your diagnostic clarity with Purewave and Xcen technology.

PureWave Single Crystal & XCen probes offers wider bandwidths for

- Improved conversion efficiency
- Improved axial resolution
- Improved sensitivity for deeper structure and clearer imaging





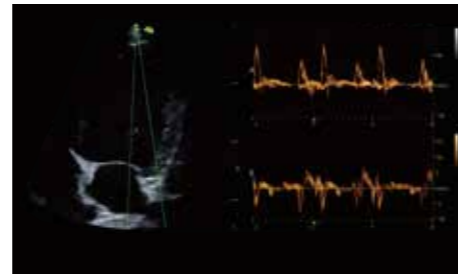
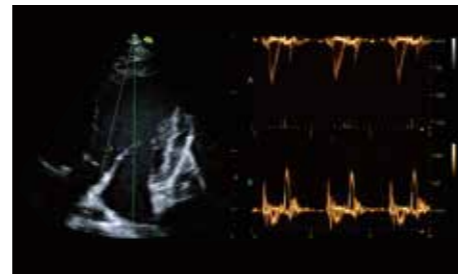
Mastering Every Beat

Precision Diagnostics for Cardiac Health

Innovative Cardiac Assessment with Simultaneous Spectral Imaging

— Multi Doppler

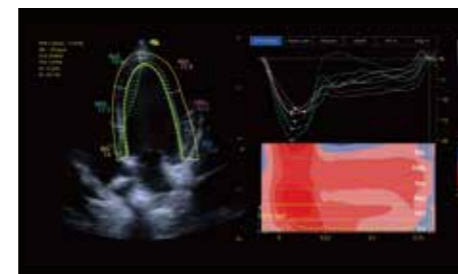
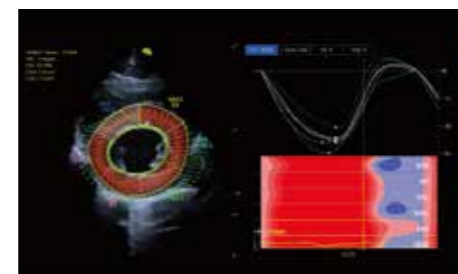
This innovative technology enhances the diagnostic precision by displaying multiple Doppler spectra from separate sample gates within the same cardiac cycle on a single scanning plane. By combining PW/PW, PW/TDI, and TDI/TDI, it allows simultaneous evaluation of wall motion and hemodynamics, improving accuracy and efficiency in cardiac assessments.



Omnidirectional Myocardial Motion Assessment

— VVI (Velocity Vector Imaging)

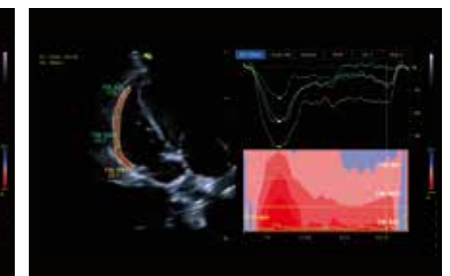
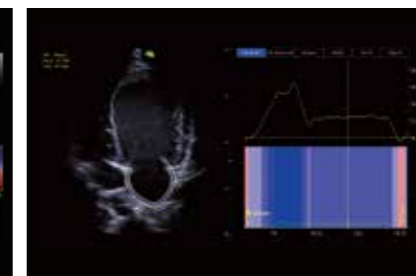
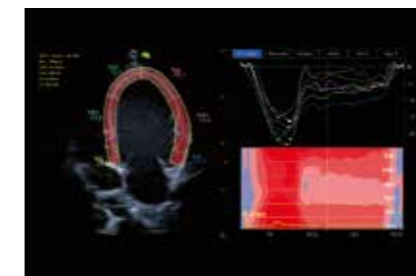
Measuring myocardial velocities including direction and magnitude in any direction, offering comprehensive cardiac mechanics assessment. It enhances evaluation of conditions like hypertrophic cardiomyopathy and supports bi-ventricular pacing decisions, providing broader insights into myocardial function.



Angle-Independent Myocardial Function Assessment

— Strain Imaging LV/LA/RV

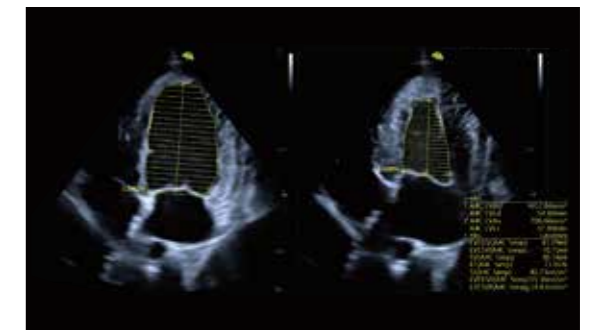
Tracking myocardial motion via 2D speckle patterns, providing angle-independent, precise evaluation of LV, LA and RV function. It enables early detection of cardiomyopathies and subtle cardiac dysfunction enhancing diagnosis, monitoring and treatment efficacy in animals with heart disease.



Smart measurements of cardiac functions

— Auto EF

Auto EF simplifies cardiac function analysis by automatically evaluating 2D echo clips. It automatically recognizes diastolic and systolic frames, providing accurate measurements to assess left ventricle function with ease.

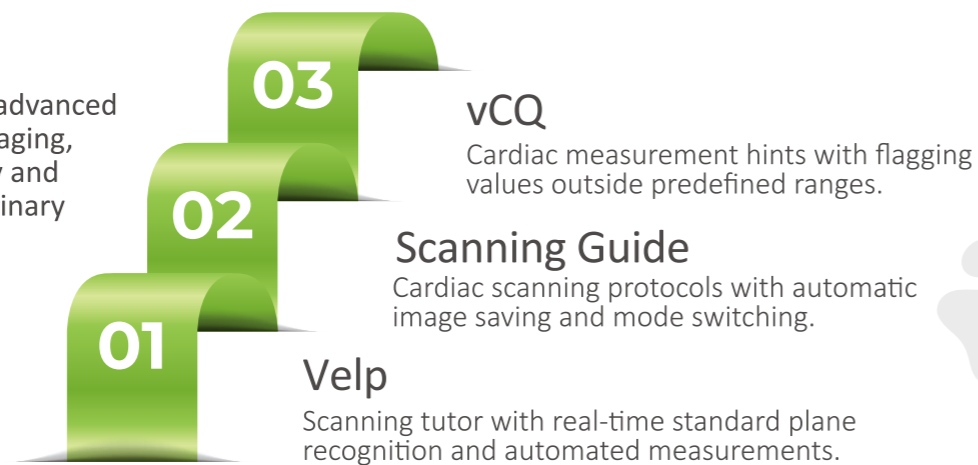




Mastering Every Beat

Comprehensive Cardiac Care Suite

R700VET offers veterinarians advanced tools to streamline cardiac imaging, enhancing efficiency, accuracy and diagnostic confidence in veterinary cardiac care.



AI-powered cardiac plane recognition and automated Measurements

— Velp **NEW**

The AI-powered Velp delivers real-time recognition of five standard cardiac planes with color-coded guidance for precise scanning. Automated measurements streamline diagnostics, enhancing accuracy and empowering veterinarians to make faster, more informed clinical decisions.



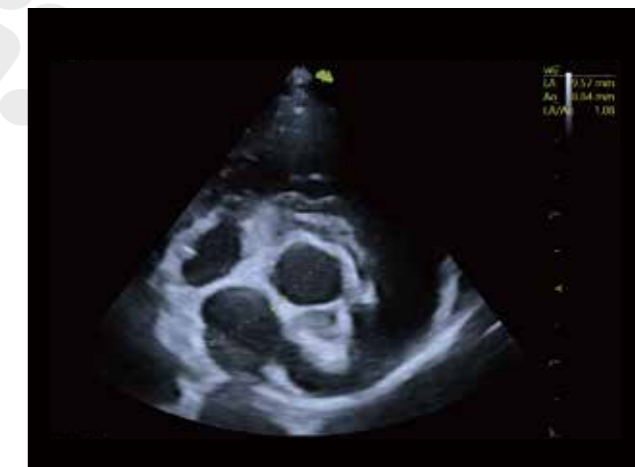
The green line indicates a standard plane, while the orange line suggests the need for rescan.

Five standard cardiac planes

- Right Parasternal Long-Axis (LAX) 4-Chamber View (4CH)
- Right Parasternal Long-Axis (LAX) Outflow View
- Right Parasternal Short-Axis (SAX) Papillary Muscle Level
- Right Parasternal Short-Axis (SAX) Mitral Valve Level
- Right Parasternal Short-Axis (SAX) 5-Chamber View (5CH)

Automated LA/AO measurement

Automated LA/AO measurement enhances diagnostic accuracy and consistency, enabling veterinarians to quickly detect left atrial enlargement, optimizing early cardiac disease diagnosis and management.

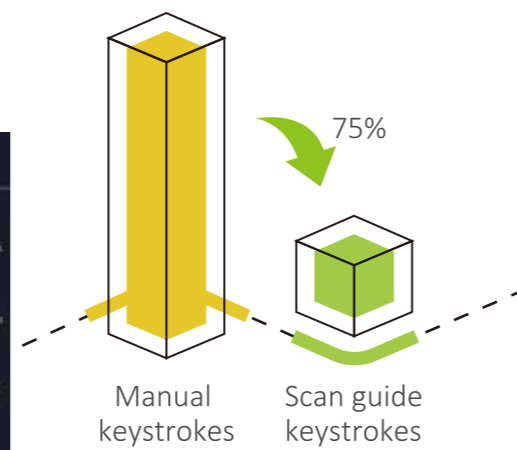
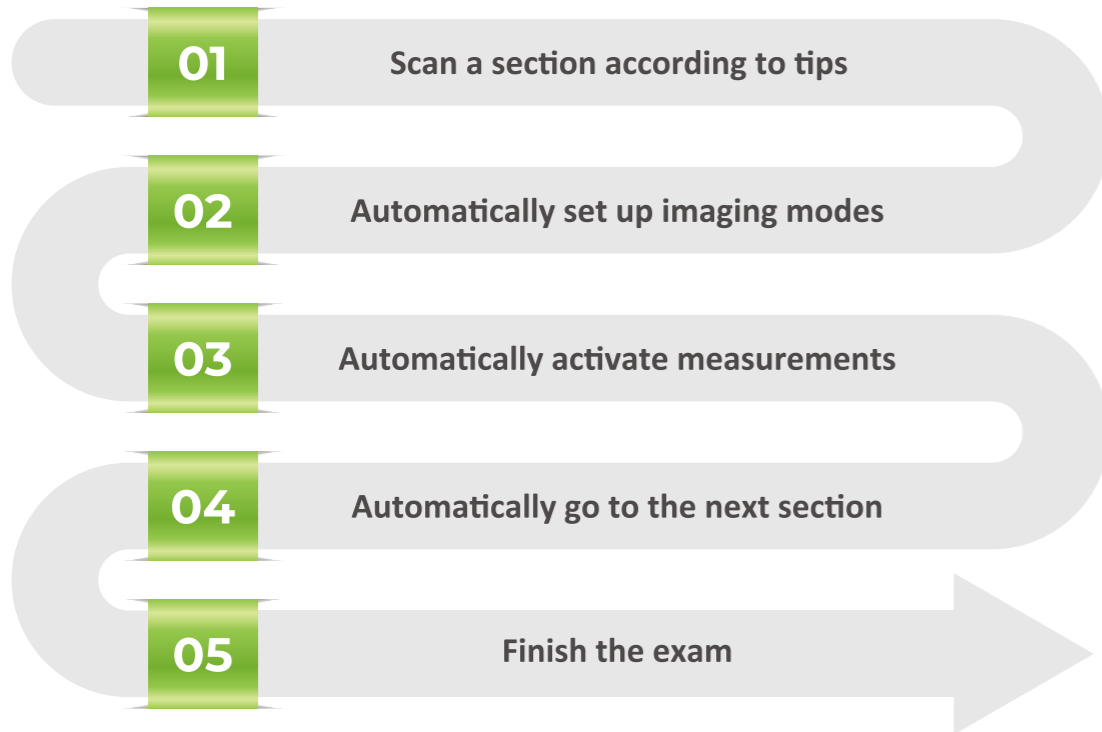


Automated LA/AO measurement of Right Parasternal Short-Axis (SAX) 5-Chamber View (5CH)

Built-in cardiac scanning protocols

— Scan guide **NEW**

Standardized protocols support accurate, standardized cardiac imaging. By clicking "Next" to automatically save images, switch modes, and proceed with measurements. It enhances efficiency, reduces keystrokes, and supports consistent, high-quality scans across 15 cardiac sections.

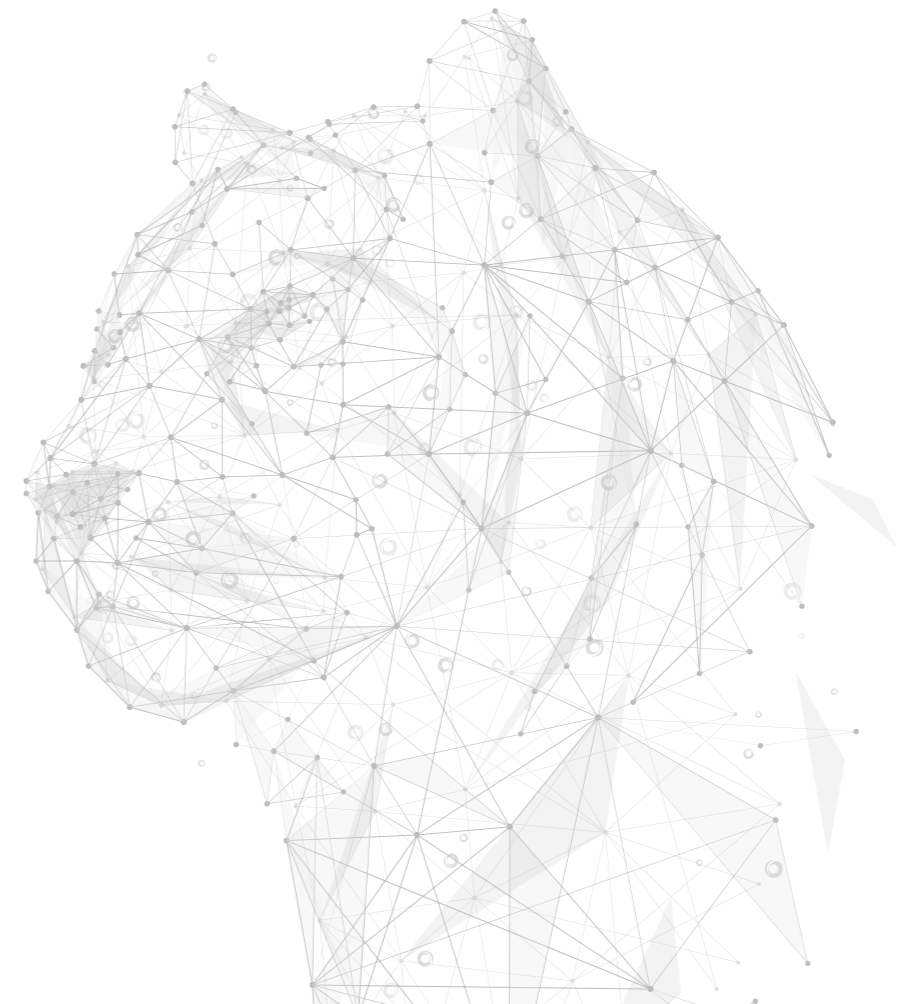
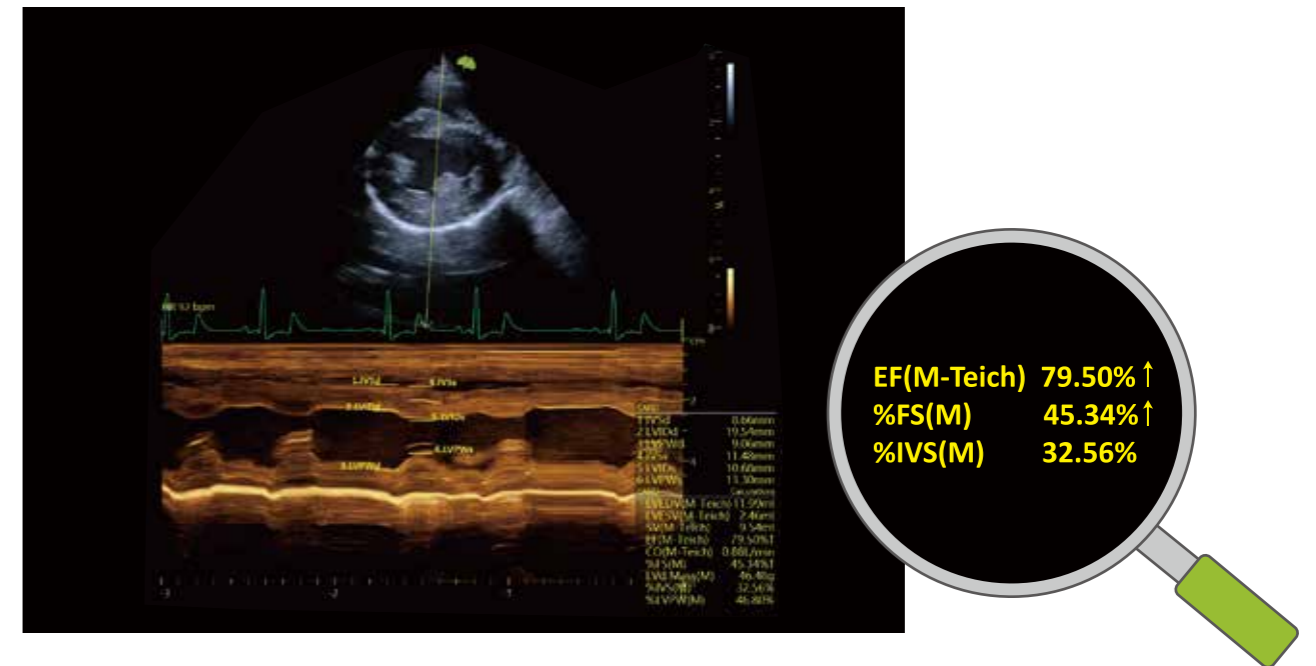


Reduce keystrokes for cardiac exam by up to 75%

Cardiac measurement hints

— vCQ

The vCQ decision-making support alerts veterinarians to potential cardiac measurement issues by flagging values that fall outside predefined ranges. It enhances diagnostic accuracy, allowing veterinarians to quickly identify and address abnormalities.

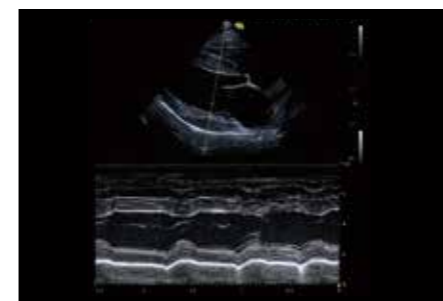




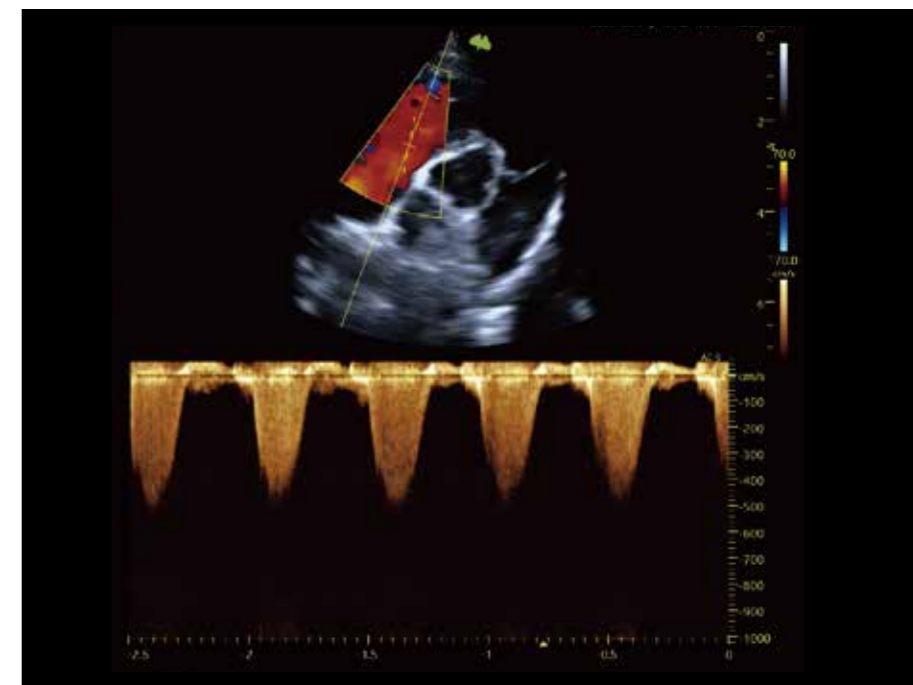
Mastering Every Beat

Advanced Cardiac Imaging for Clarity and Confidence

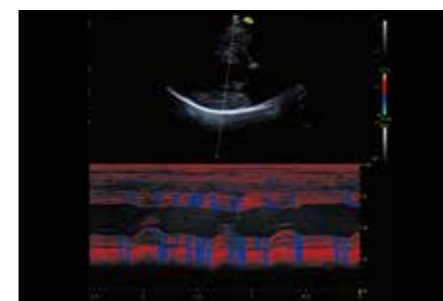
R700VET delivers superior cardiac imaging, combining strength, precision and intelligence to handle complex heart conditions with ease.



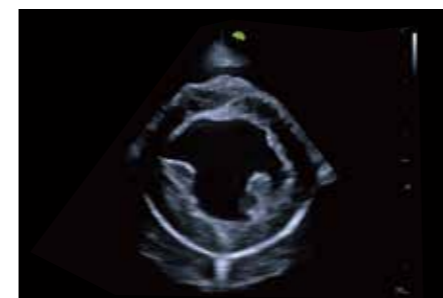
Canine M mode



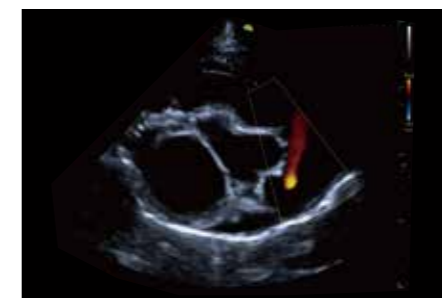
Canine CW



Canine TVM



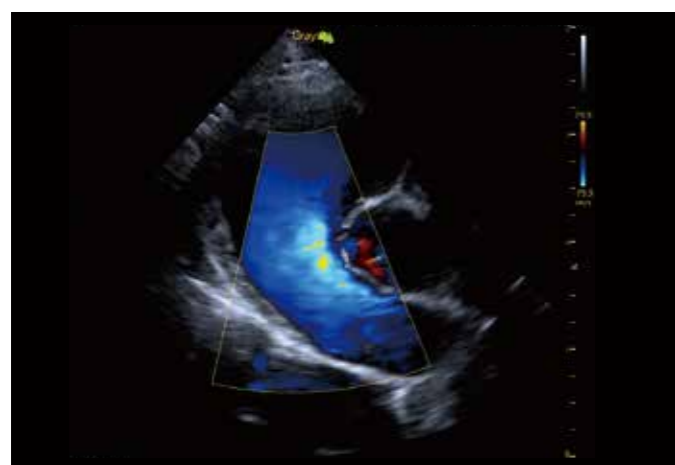
Canine short-axis view of papillary muscle



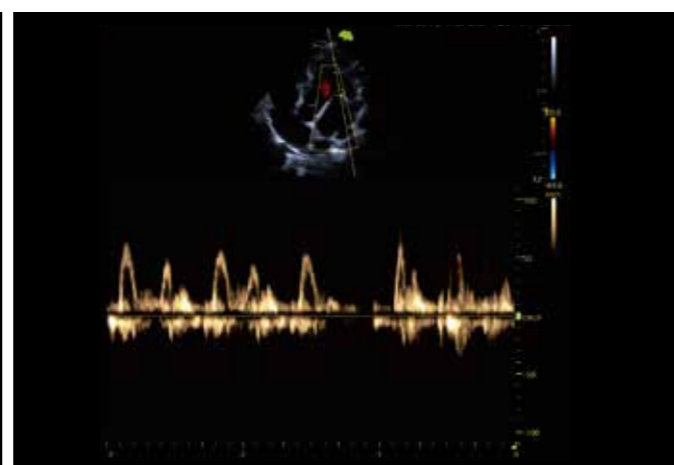
Canine pulmonary regurgitation



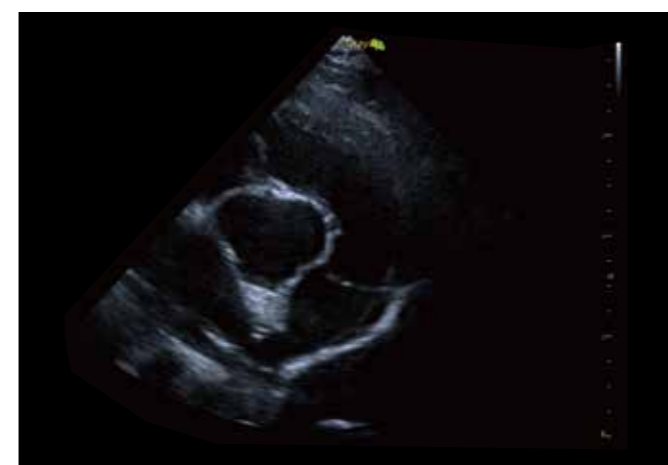
Canine LV long axis



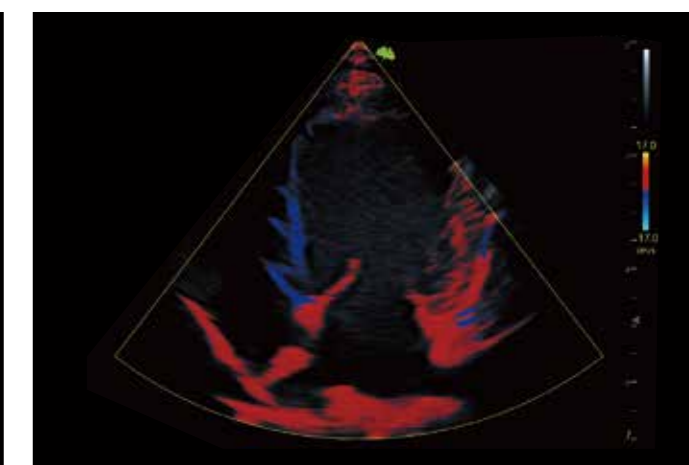
Canine cardiac CF



Canine cardiac PW



Canine short-axis 5 chamber view

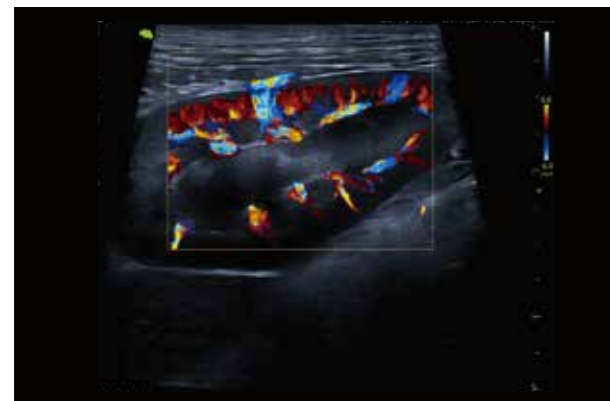


Canine TVI



 **Insight into Every Organ**
Clear Imaging for Comprehensive Internal Medicine

Mirroring the adaptability of the Siberian Tiger, R700VET provides powerful, precise abdominal imaging for quick and accurate diagnostics.



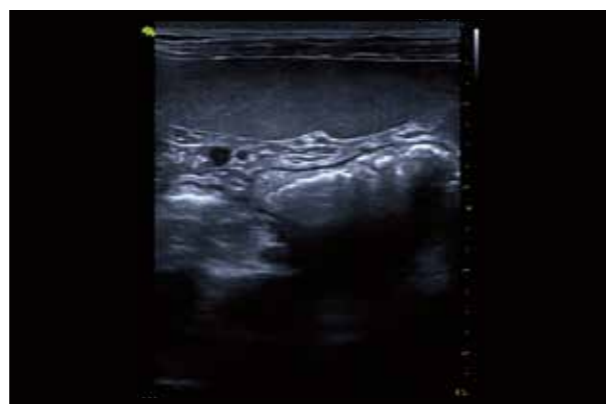
Canine kidney CF



Canine spleen CF



Canine bladder



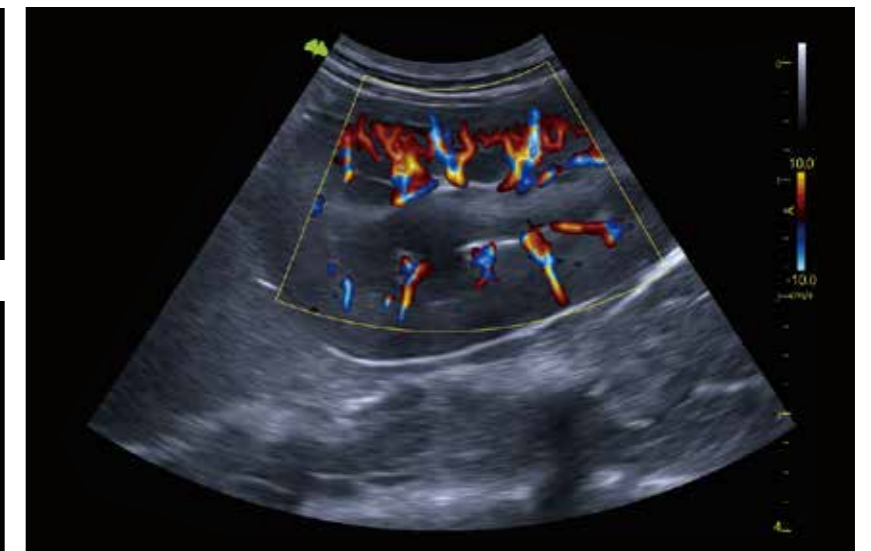
Canine spleen



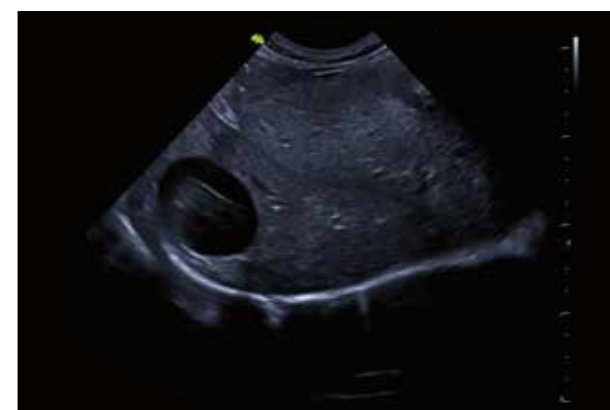
Canine kidney



Canine intestine



Canine kidney VLuminous Flow



Canine gall bladder



Feline reproduction

Built-in scanning tutor

Tutorial

Providing beginners with anatomical illustrations, transducer positioning videos, standard ultrasound videos and scanning tips.

Displayed in both the main monitor and the touch screen

Read-time scanning with reference

Tutorial on 6 organs

Tip on transducer position and anatomical structure display



Transducer Solution

Abdomen & Reproduction

Cat, small dog and exotic small animals

Abdomen & Reproduction

Superficial & Musculoskeletal

Cardiology



G3-9M

G4-9M

X4-12L

X6-16L

X10-23L

I7-18L

G3-10PX

G4-12P

Large Animal Solution

Big size dog, horse, cattle, sheep and exotic big animals

Abdomen

Cardiology

Equine tendon

Reproduction



X2-6C

G1-4P

S1-6P

X4-12L

X6-16L

G4-12LV

Exceptional User Experience

Auto Optimization
One click to optimize the image quality for optimal imaging results quickly and effortlessly.

Customized Intuitive UI Design
Personalize your interface like a smartphone for seamless operation

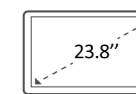
Auto measurement for ABD & Cardiac
Automatically measures abdominal and cardiac scans, enhancing accuracy and saving time

VReport
Allow users design and import the report templates, add custom measurements, report contents and automatically generate annotation list.

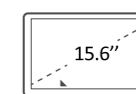
VWork
Simplify workflow with automated annotations and measurements, reducing exam time and keystrokes.

Finger Drawing Annotation
Simplify workflow with automated annotations and measurements, reducing exam time and keystrokes.

Easy Sharing
Share images and cineloops effortlessly via Bluetooth and Wi-Fi.



23.8" large monitor



Tilttable 15.6" touch screen



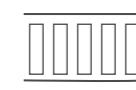
In-built gel warmer



Height and direction adjustable console



Built-in battery for 60-minute continuous scanning



5 active ports