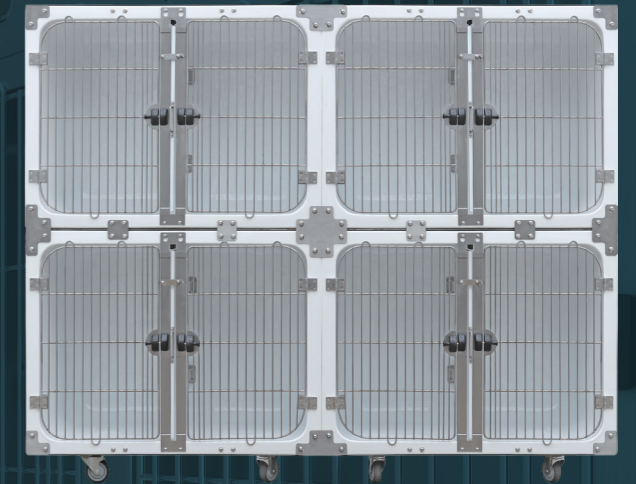


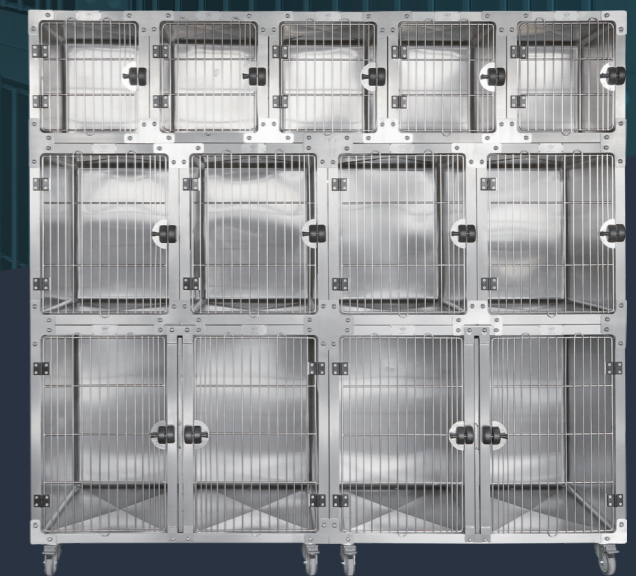
AEOLUS CAGE SERIES



KA-510 Fiberoptic Cage Series

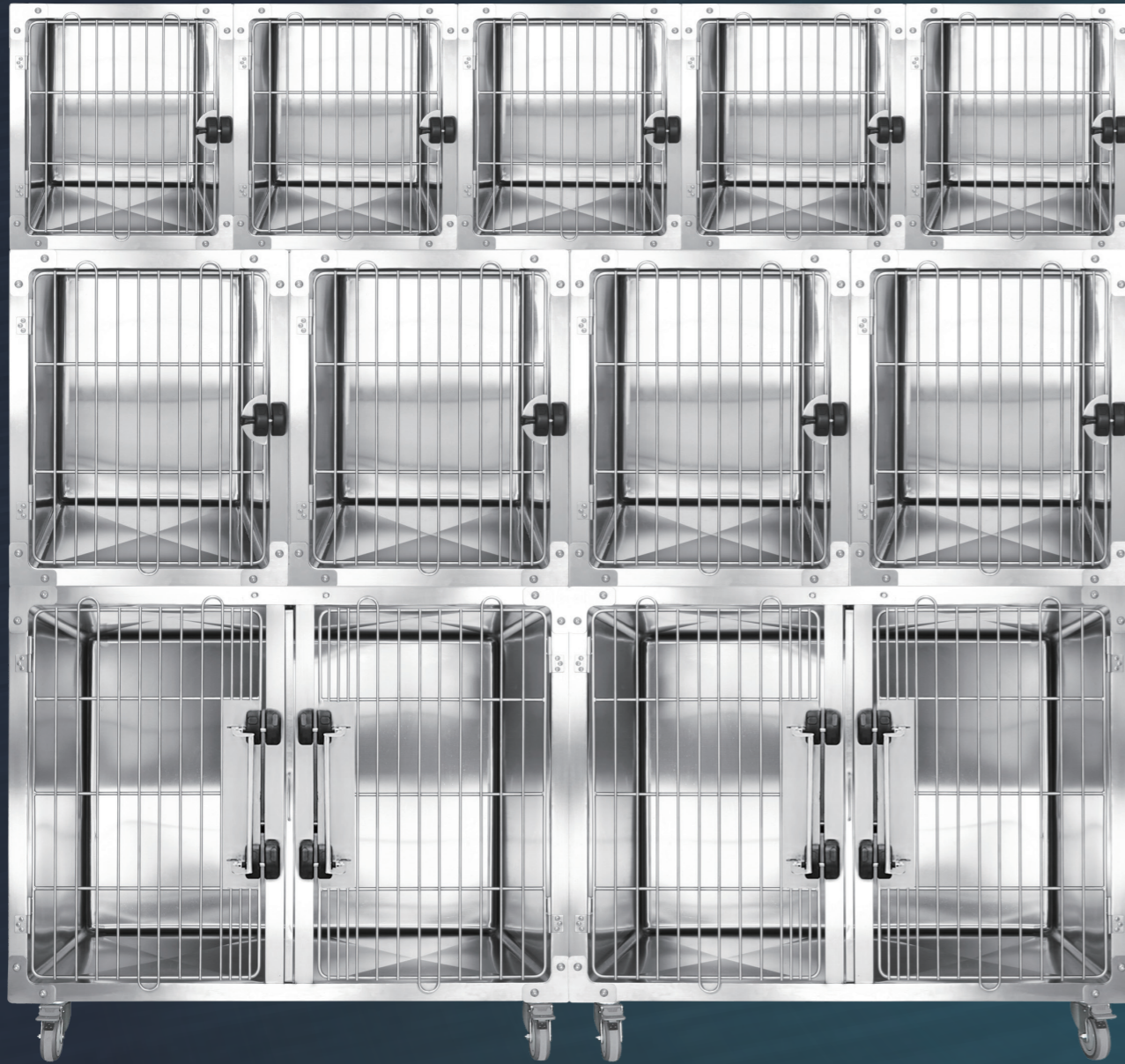


KA-505 Flat Packing Cage Series



KA-509 Round Corner Cage Series

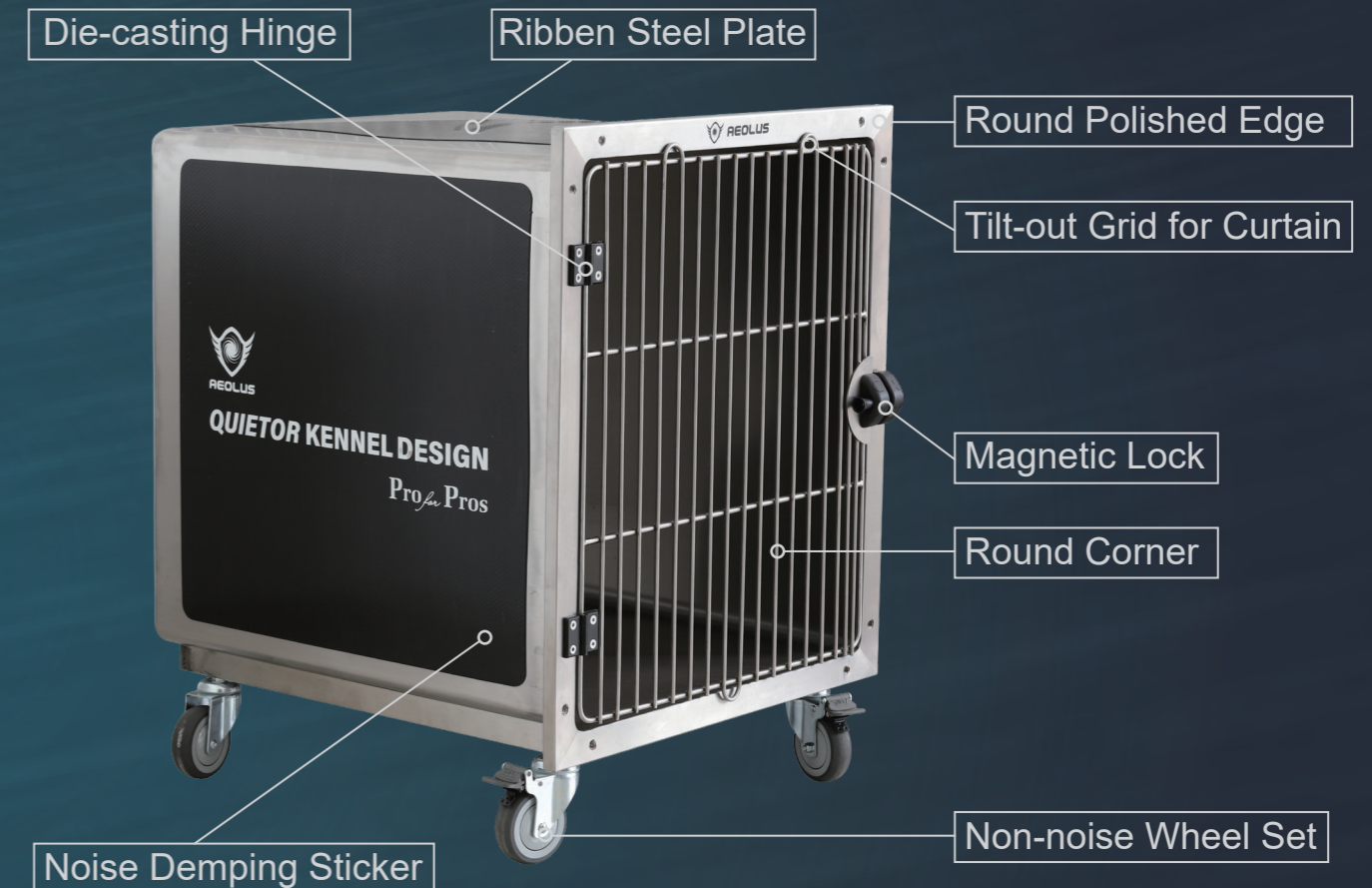
KA-509 Round Corner Cage Series



- Rounded corners and solid walls eliminate areas where germs can grow, easy to maintain and keep the space sterilized and clean.
- Top grade SUS304 stainless steel material provides a long service life.
- Single hand locking system makes it easy to handle a dog and lock the door at the same time.
- Magnetic latch designed for noise dampening closing operation.
- Transparent Oxygen Door options are available.
- Welcome for customized size.

- **KA-509BK:** A full bank consists of 5 Small, 4 Medium and 2 Large cages.
- **KA-509-1L2M:** A small bank has 2 Medium and 1 Large.

KA-509 Details



KA-509L-DL

Stainless Steel Round Corner Cage - L upgraded version, double magnetic locking system

KA-509ECO

Round Corner / Economical Cage

Tilt-out Grid
Specially designed to hang curtain

Excellent Craftsmanship
Professional polishing and finishing

SUS304 Divider
Exists in Large size

Removable Middle Pole
Greatly save packing volume by placing 2 medium cages into large cage

Top Class 304# SS Material
Provide durability and longevity

Round Corner
Hygienic, easy for maintenance and cleaning.

Magnetic Latch
Running quiet and easy to operate

Full-Welded Supporting Leg
Prevent kitten and debris hidden

Noise Dampening System
To create a comfy and quiet ward and boarding environment

T-Joint Connectors
Available for various combination

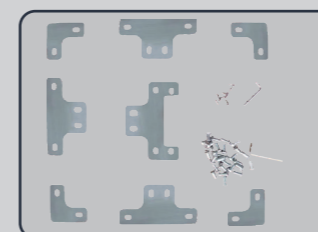
Galvanized Casters
2 with brakes and 2 without. Convenient for movement

SUS304 Flexible Bone Shape Hinge
Easy lifting up straight for door exchange

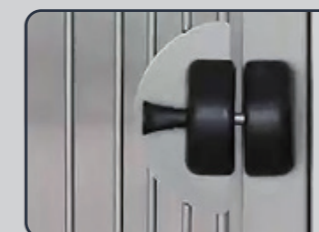
Comparison Between KA-509 and KA-509Eco

Item	KA-509	KA-509ECO
Picture		
Thickness of SUS304 plate	1.2mm/18 gauge	0.85mm/21 gauge
Door Hinge	Die Casting zinc alloy	SUS304 Flexible bone hinge
Noise Dampening Sticker	5pcs (all-wrapped)	3pcs (Bottom/Left/Right Panel)
Supporting Leg	Adjustable leveller	Full-Welded solid pillar
Divider	Double-sided enclosed	One side enclosed

Standard Accessories



Connection Brackets



Magnetic Lock



Noise damping system

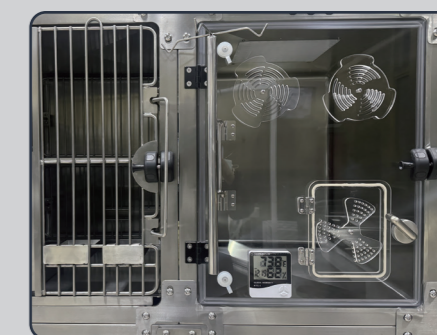
Optional Accessories



IV Pole



Nylon Mattress



Oxygen Door



Curtain



Dry Bed



Plastic dip-in stainless steel grid



Wheel Set



Name Card Holder



Feeding Bowl

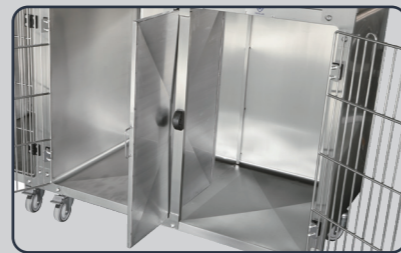


S/S Grid & Waste Tray

KA-509 Round Corner Cage Series

■ KA-509-WET Come with Floor Grid & Waste Tray

- Stainless steel waste tray for easy cleaning purpose.
- Fully welded floor grid, smooth and comfortable.



Large Size Divider



Magnetic Latch



Waste Tray



Standing Grid & Bridge

■ KA-509D Demonstration Cage comes with LED Light / Drainage System

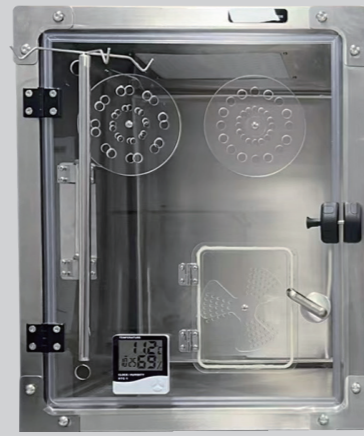


KA-509 Round Corner Cage Series

KA-509MTH Oxygen Cage



KA-509MTH



KA-509MTH-02



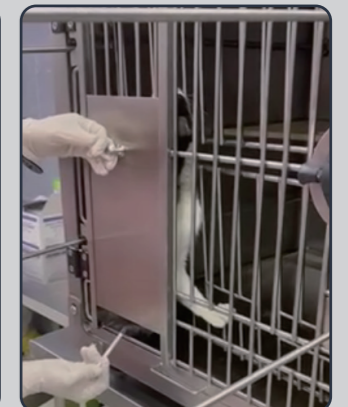
KA-805 Observation Cage with Cabinet



KA-509-RES Restriction Cage / Injection Cage



LEARN MORE



KA-509 Round Corner Cage Series

KA-509-ISO Parvo/ Isolation Cage



Round Corner Back View



Slope From Front to Back



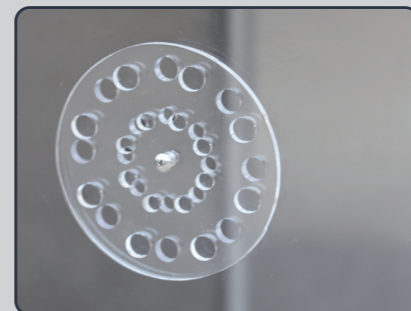
Drainage in Cage



Hygrothermograph & Functional Hole

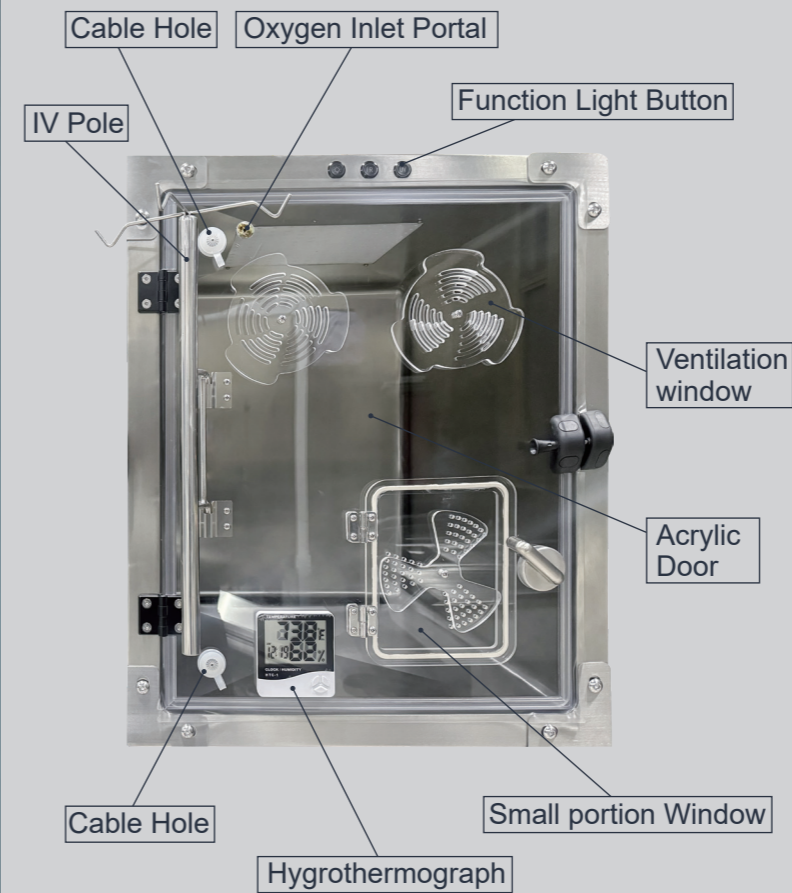


Standing Grid



Ventilation Hole

UC-1601 Economical Intensive Care Unit



UV Disinfection Light

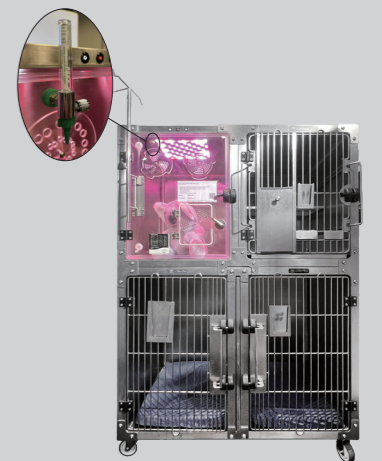


Infrared Warming Light



Illumination White Light

- The Intensive Care Unit come with Oxygen Acrylic Door, Ventilation Window, Small Portion Window, Oxygen Inlet Portal, Cable Hole, IV Pole and Function Light.
- UVC ultraviolet disinfects and sterilize the cage.
- Infrared physiotherapy function speeds up internal circulation and improves pets' recovery speed.
- White light provides comfortable illumination and examination.



KA-509 Round Corner Cage Series

■ CC-1201 Stainless Steel Cat Condo



Magnetic Latch



Main Cabinet Shelf



Double Divider



Side Cabinet Shelf

■ KA-509-IRT Infrared Warming Light Cage with Timer



KA-509 Round Corner Cage Series

Feedback



KA-505 Flat Packing Cage Series

KA-505-AZ Galvanized Cage Series



Magnetic Latch



Grid & Tray



Large Size Divider



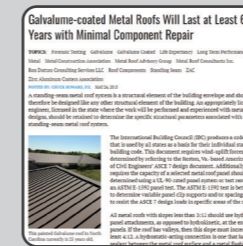
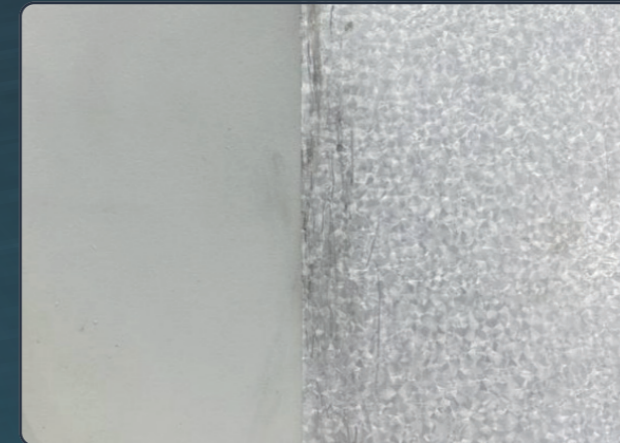
Assemble Box

- The biggest concern of normal steel panel over stainless steel is rusting, now the galvalume sheet (Aluminum (55%), Zinc (43.4%) and Silicon (1.6%)) has provided us the perfect answer, which has even better anti-corrosion performance than 304 S/S. With the double coating of galvalume and plastic powder, the cage has unbeatable anti-rusting feature and very good price, you really should include it into your line to boost the modular cage sales.

- Plastic dip-in treated grid and double layered ABS waste tray is involved.
- Flagship cages for its economical shipping cost from flat packaging.
- A full bank consists of 5 Small, 4 Medium and 2 Large cages.
- A small bank has 2 Medium and 1 Large.

Item Number		Cage Size		Carton Dimensions	CBM	N.W (kg)	G.W (kg)
Small Size	KA-505S-AZ	18.58"L×22"D×20"H	47.2cmL×56cmD×51cmH	58×58×20cm	0.067	13.6	15.6
Medium Size	KA-505M-AZ	23.23"L×26"D×30"H	59cmL×66cmD×76cmH	82×70×19cm	0.109	19.5	21.5
Large Size	KA-505L-AZ	23.23"L×26"D×30"H	59cmL×66cmD×76cmH	125×90×22cm	0.248	28.3	30.3

Galvalume Sheet in Painting & Original



Galvalume-coated Metal Roofs Will Last at Least 60 Years with Minimal Component Repair

According to MCA Galvalume study, the in-service Galvalume roof panels and associated components have lasted 60 years with minimal component repair.
Refer: <https://roofingmagazine.com/galvalume-coated-metal-roofs-will-last-least-60-years-minimal-component-repair/3/>

Research initiated in the 1990s has output reports of galvalume dipped steel remaining in great condition after 25 years of exposure in both rural animal containment, oceanic uses and industrial uses.
Refer: <https://www.osti.gov/biblio/6519570>



Corrosion Resistance & Self-Healing Properties
Galvalume's chemical formula was specifically designed to combine the toughness, strength, and self-healing properties of zinc with the rust resisting properties of aluminum. That's why Galvalume's corrosion resistance is about two to four times better than galvanized steel.
Galvalume's self-healing characteristics help control the red rusting at any cut/exposed edges. Nearly all steel-based products will experience some level of normal edge creep from the exposed steel when the coil is cut, but it is minimal and will eventually stop with Galvalume. Remember that edge creep can also be offset by hemming the panels and touching up any exposed edges with paint pens.
Additionally, these self-healing characteristics make failure in the roof field less likely with Galvalume systems.

Another noticeable advantage from Galvalume material is its unique self-healing feature. Another noticeable advantage from Galvalume material is its unique self-healing feature. All steel-based products have some degree of edge creep- a natural occurrence of corrosion at the point where the steel was cut. We have however

taken to practices such as hemming exposed edges and painting exposed edges in order to stop edge creep from occurring. These practices coupled with Galvalume's self-healing characteristics will discontinue the spread of red rust growth.
Refer: <https://sheffieldmetals.com/learning-center/what-is-galvalume/>

KA-505 Flat Packing Cage Series

KA-505-AZSS series

Galvanized wall and side

- Flat packed, easy to reduce transportation costs.
- Multiple combinations to choose like: 5S+4M+2L, 4M+2L, 2M+1L, 3S+3S+3S.
- Optional mobile platforms (with a bottom frame and casters).



KA-505-SS Stainless Steel Cage series



- Stainless Steel Modular Cage Bank System (201Hybrid Stainless Steel/304 Stainless Steel available).
- Specific Functions of High-end Modular Cage Bank: Classic single-hand, double-point lock; Divider in Large-size Cage (divided into 2 medium size cage); Finer and narrower spaced wires at latch area (preventing pets from opening the latch by extending their paws).
- Perfect design, quick installation and stable structure.
- Plastic dip-in treated grid (304 stainless steel grid available) and double layered ABS tray is involved.

KA-505D Stainless Steel Cage with LED Light

Display Cage With Glass Door



KA-505D-201

Display Cage with LED illumination



KA-505D-LUM

Wheel Base

Flat Packing Modular Galvanized Cage

▼ 2L+4M+5S



KA-505-6W Large Size Base Frame for 2pcs KA-505L

▼ L+2M



KA-505-4W Base Frame for KA-505L

KA-505 Flat Packing Cage Series Drainage Version

Feedback

TX-482424GLV

Aluminium Zinc Alloy Cage, with black powder coated doors, drainage hole and waste pipe, wooden plastic floor plate



TX-484842SS

201# Stainless Steel double stack drainage cage, with wooden plastic floor plate, with bowls and bowl brackets



TX-484842GLV

Aluminium Zinc Alloy double stack Cage, with black powder coated doors, drainage hole and waste pipe, wooden plastic floor plate, and bowls and bowl brackets



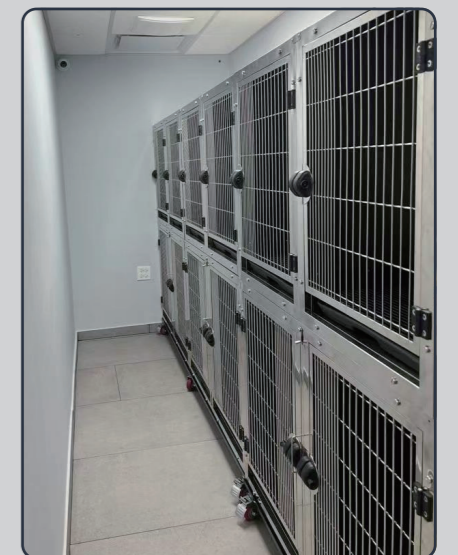
TX-482424SS

201# Stainless Steel drainage cage, with wooden plastic floor plate



Water Pump

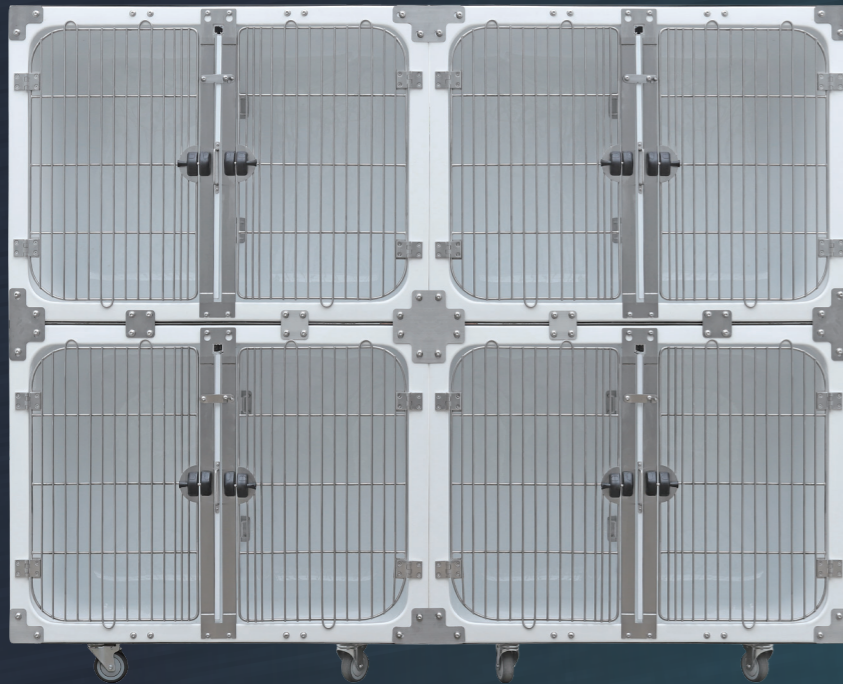
Suck water from cage pipe



KA-510L Large Size Fiberglass Cage

KA-510M Medium Size Fiberglass Cage

KA-510L Large Fiberglass Cage Ivory White Decoration Furniture



Round Corner



Middle Divider/Magnetic Lock

- Double sided acrylic body with fiberglass reinforcement in the middle.
- Beautiful smooth surface in charming white colour, easy to clean and disinfect.
- Easy to stack up and assembly, just simple basic tools needed.
- Lockable casters can be attached to the bases of both medium and large cages.
- One cage size at 122cmLx66cmDx-92cmH, can be divided into two half sized compartments for more flexible space usage.
- The whole cage can be fully opened as more convenient access for large patients when central column easily removed.
- Wheels for Optional Choice.



Back View of 2 Unit



Change into Transparent Acrylic Door to be a Oxygen Cage

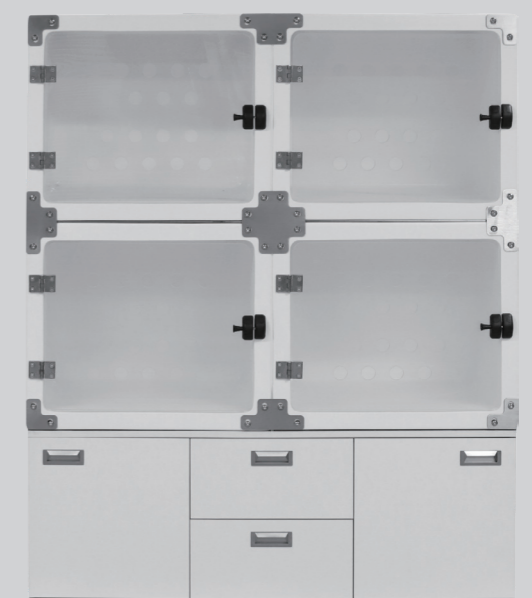


Front/Side View of 1 Oxygen Door Cage & 1 Grid Door Cage Stacked

- Two medium size for optional choice
KA-510M2 70cmLx60cmHx54cmD
KA-510M 60cmLx70cmHx54cmD
stainless steel grid door, acrylic door or glass door are all available
- Medium size to stack on cabinet or add with power socket could be a new style. Unleash your imagination, and we'll help you bring it to life.

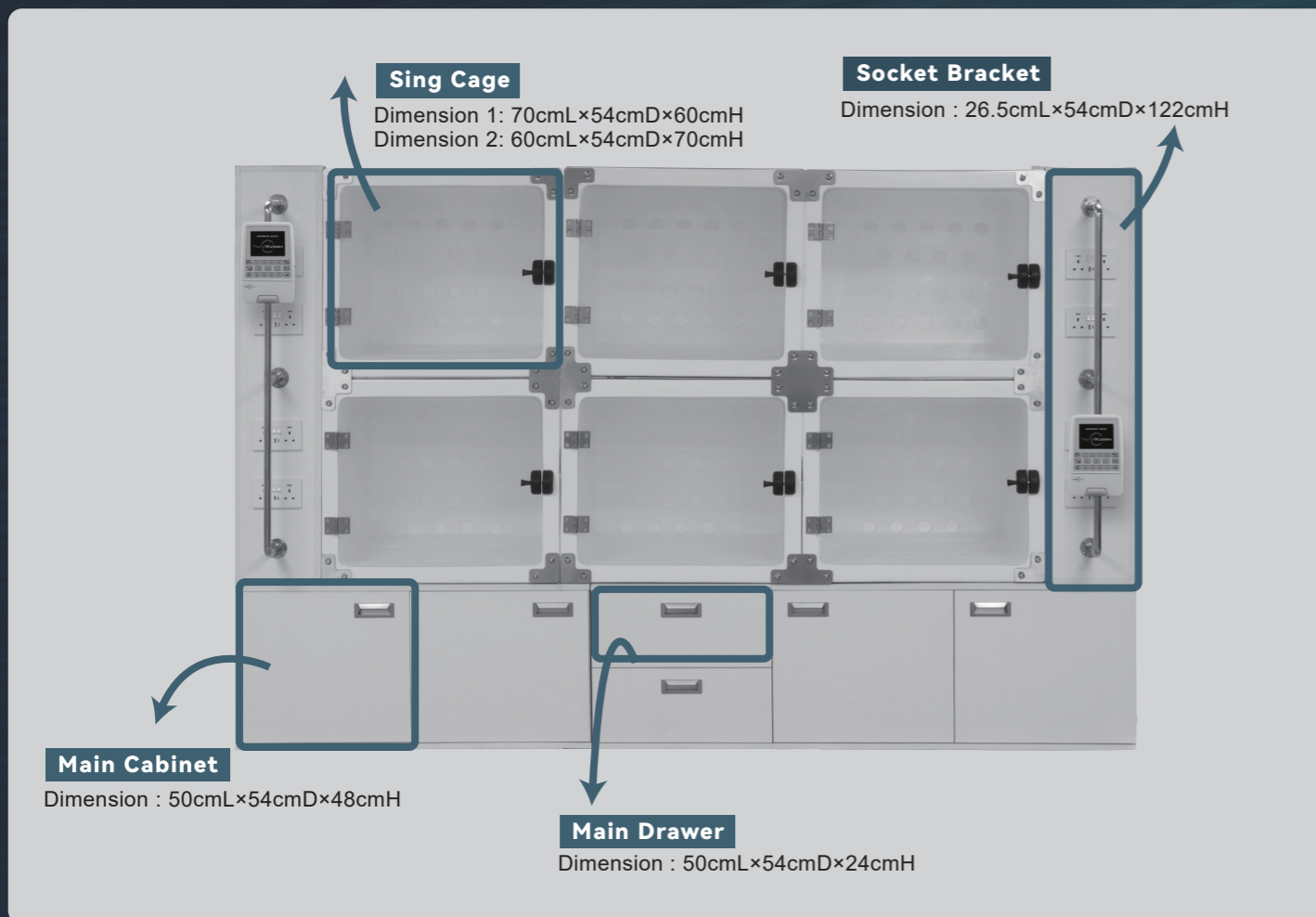


Full Bank:
6 Cages with Bottom cabinet and, IV Pole, 8pcs Power Socket
263cmLx180cmHx55cmD
Wheel Base available



Full Bank:
4 Cages with Bottom cabinet
140cmLx180cmHx55cmD
Wheel Base available

KA-510M Medium Size Fiberglass Cage



- Fiberglass made with round corner, acrylic ventilation door. White fiberglass material has a smooth surface and soft tones, which can reflect light and create a bright, peaceful atmosphere, helping cats stay relaxed and at ease, reducing anxiety.
- Wooden made, Customization available, with Bottom cabinet, IV Pole, Power Socket, and Wheel Base.

Two cage sizes are available for selection:
Option 1: 70cmL×60cmH×54cmD Option 2: 60cmL×70cmH×54cmD



IV Pole for Infusion Pump

The option to equip with infusion pump and IV pole is available. The combination of the IV pole and infusion pump allows the cat cabinet to swiftly transform into a medical care space, enabling precise control over the infusion rate and dosage, thereby providing professional medical support for cats that are ill or require post-operative infusion. Administering treatment in a familiar environment can help reduce the stress and anxiety that cats may experience in unfamiliar settings.



KA-510M Medium Size Fiberglass Cage

Pet Smart Cabin

Integrated Power Socket (10A each)

External plug, convenient power supply: The cat cabinet is designed with an external plug, which is convenient for you to connect to the power supply to power your cat's smart devices (such as automatic feeders, cameras or heating pads)



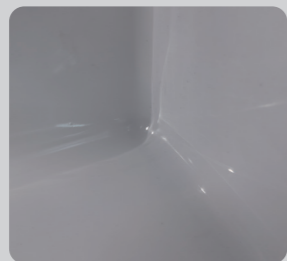
Acrylic/ Tempered Glass Ventilation Door

Transparent acrylic door with hole design: The acrylic door is durable and not easy to break, so you can always observe the cat's activities in the cabinet. Multiple breathing holes are designed to ensure air circulation



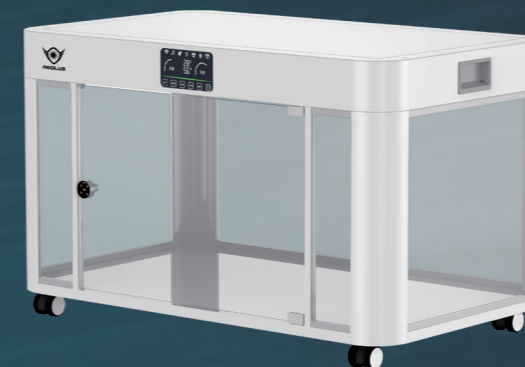
Hygeian Round Corner

Internal rounded corners, easy to clean: avoids the possible harm to cats caused by sharp corners, reduces the accumulation of dust and dirt, and is easier to clean



Hidden Power Cord, Fancy and Safe

Voltage is passed through the bottom, safe and hidden: The power line is hidden through the bottom of the cat cabinet, avoiding the potential safety hazards caused by exposed lines and ensuring the safety of cats and family members.



TD-913



TD-913C

- Pet Smart Cabin integrates functions such as light, fresh air system, sterilization and UVA disinfection, double display of temperature and humidity, music and aromatherapy, real-time monitoring as well as interactive communication.
- Fully transparent design with exquisite appearance, making pet status clear at a glance.
- Oxygen therapy and atomization portal reserved.
- Multi layer stacking, efficient use of space, and flexible movement of position.
- Suitable for families, pet hotels, pet grooming shops, pet hospitals, shopping malls, cinemas, schools, as well as short-term and long-term pet boarding.

ITEM	Net Weight	Dimention(cm)	Power	Control	Applicable Type
	(kg)	Stand			
TD-913	38	100×60×63	20W	LCD touch screen	Cat
TD-913L	51.5	100×60×75	20W	LCD touch screen	Dog and Cat
TD-913C	59	100×60×1212	20W	LCD touch screen	Cat