

Veterinary Video Otoscope



TT-OTS100

It is a handheld electronic video otoscope for animals with magnification function, image and video shooting, and supports mobile APP operation and viewing.





Functions



Otoscope

Laryngoscope

Rhinoscope

Ureteroscope

Skin Checking





Features



1.85 inch touch screen



Long press to turn on/off, short press to adjust the light source brightness



Remaining power display



Detachable lens with 1 megapixels and accessories for easy assembly and storage



Max 1.5X magnification



one-click shooting of images and videos (short press for images, long press for videos)



Built-in lithium battery and type-C charging

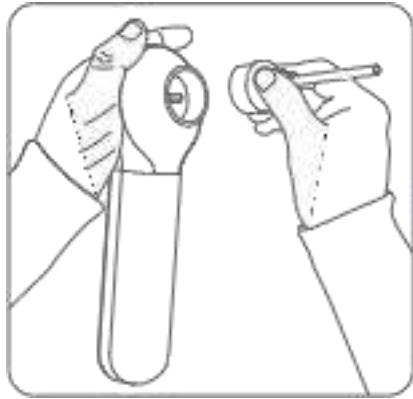


Wifi wireless and wired transmission





Features



Detachable lens

Can replace endoscopes of different specifications and types



Wired and wireless dual display

Images and videos are displayed simultaneously on the built-in touch screen and external display or mobile phone



Structure



①	Up
②	Down
③	Date
④	Left/Right Ear Mode
⑤	OK Button
⑥	Button Description
⑦	Settings Button
⑧	Time
⑨	Battery Status Display



1.5 times magnification



TF Sim card



Detachable scope
φ3.9mm
or smaller size for option



Freeze
Convenient for observing



Capture image
Record Video

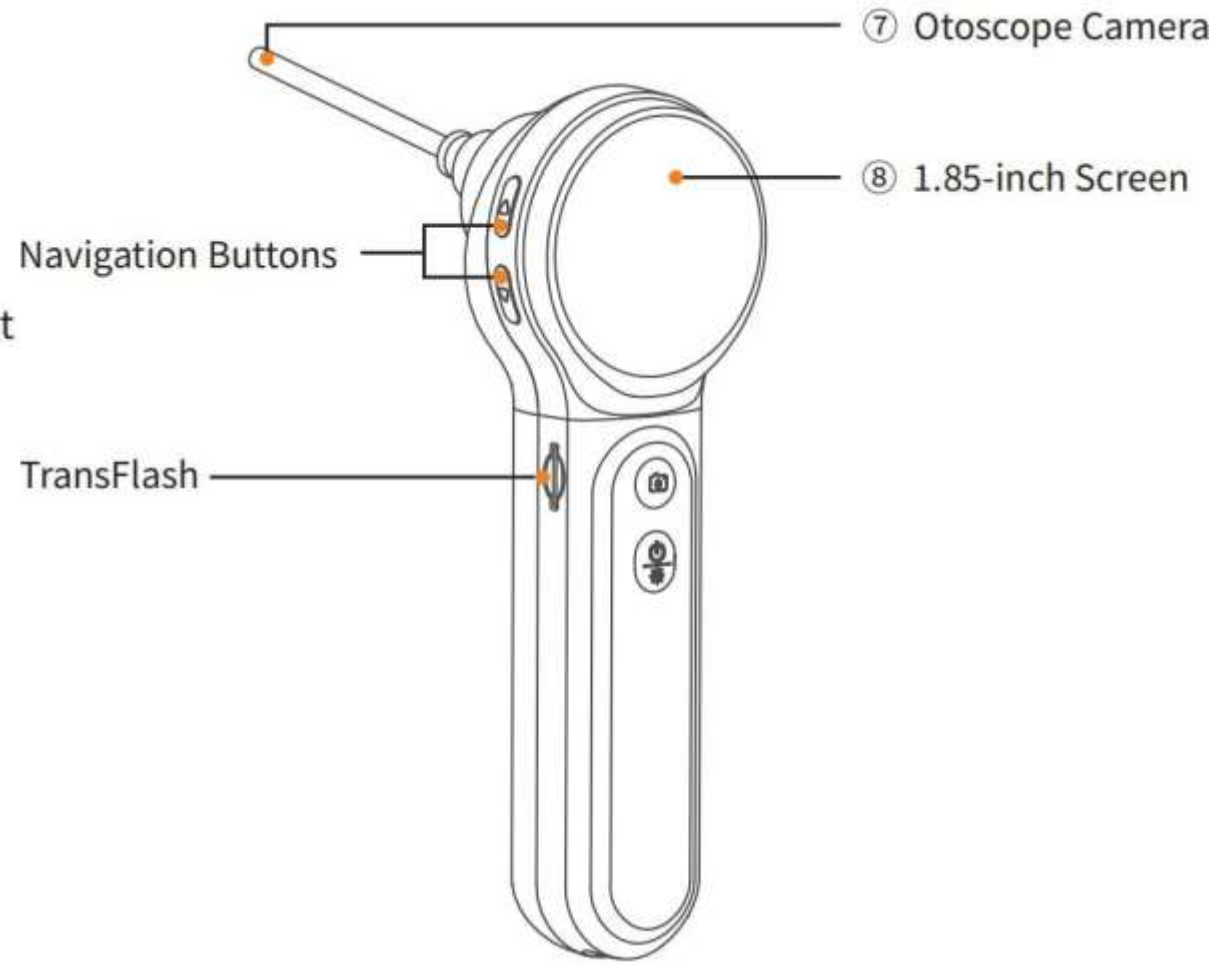
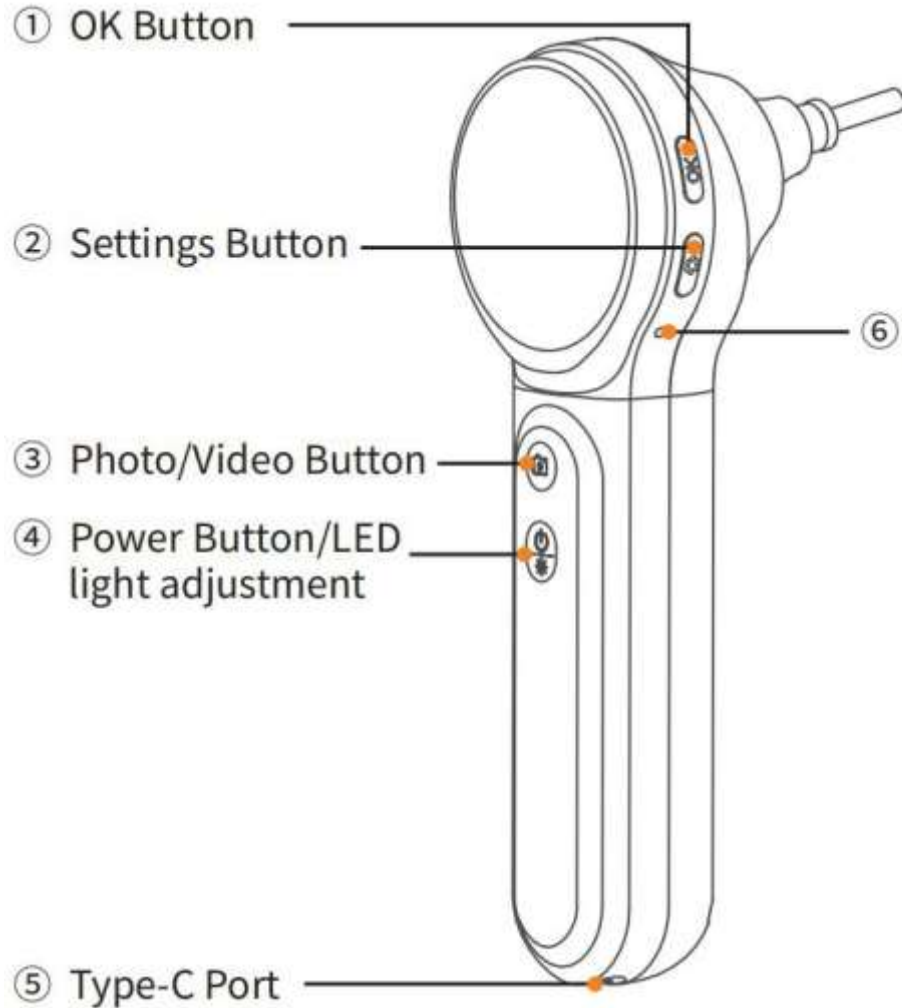


Wired and wireless switching





Structure

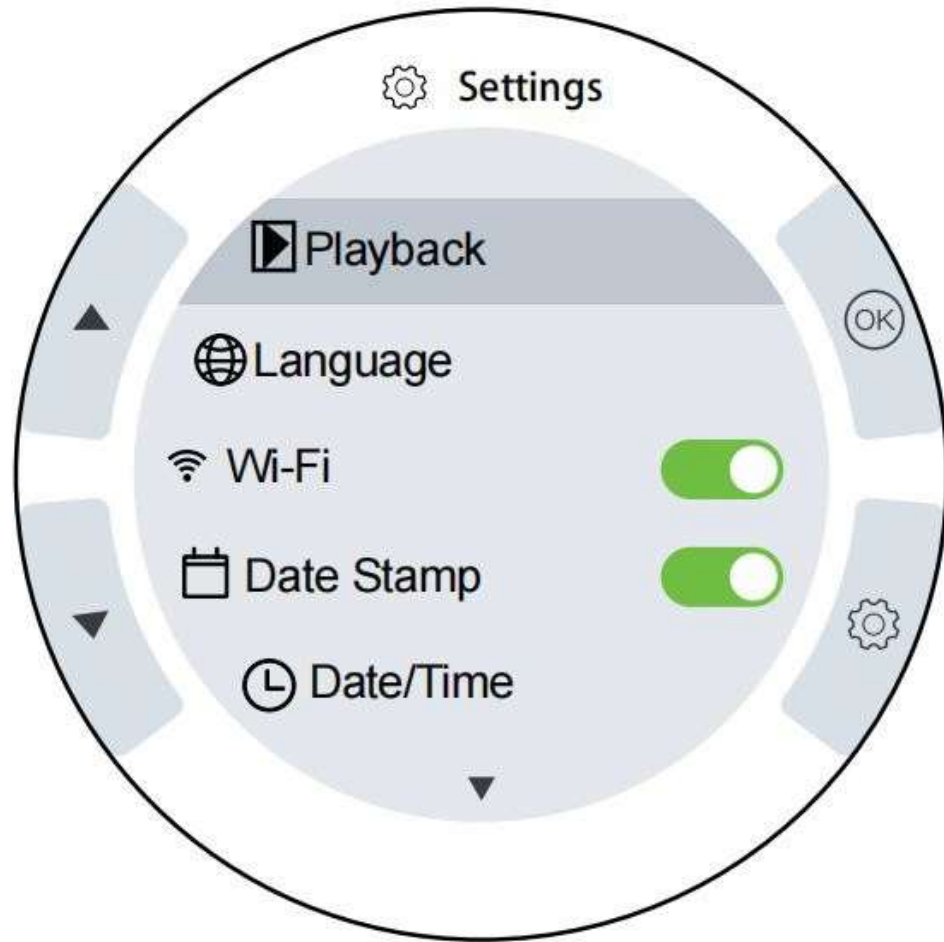


Material





Operation Interface






Settings	Description
Playback	View captured photos and videos
Language	Supports English, German, French, Italian, Spanish, Russian, Japanese, Chinese
Wi-Fi	Turn On/Off the Wi-Fi
Date Stamp	Turn On/Off the Date Stamp
Date/Time	Setting the Date and Time
Format	Formatting the files stored in the TF card (Note: Formatting will delete all files on the TF card, please proceed with caution.)
Auto Power Off	Close — 5mins — 10mins
Factory Reset	Restore all device settings to factory defaults with one click
Version	View device model and version information





Button Description

	Press to scroll upwards in the menus Zoom 1.0~1.5x
	Press to scroll downwards in the menus Left/Right Ear Switch
ok	Confirm Operation Play and Pause in Photo/Video mode Long Press: Enter/Exit Album
	Short Press: Enter Device Settings/Delete Image or Video in Album Long Press: Turn On/Off Wi-Fi
	- Home Page Status Short Press: Take a Photo Long Press: Start/End a Video Recording - Non-Home Page Status Short Press: Back to Home Page
 	Short Press: Adjust the Camera Lights By default, the lowest brightness level is used when turning on the device. When looking at ears, be sure to use the lowest brightness level to avoid burning ears. Long Press: Power On/Off
	-Reset: short press to reboot the system





Specifications



Monitor	Screen Type	1.85-inch IPS LCD Screen
	Screen Resolution	360*360
	Image/Video Resolution	720*720
	Screen Material	Tempered Glass
	Port	Type-C
	Lightness adjustment	Bright/medium bright/ slightly bright/ off
	Magnification	1.0~1.5x
Camera	Diameter of Lens	3.9mm
	Camera Megapixel	1MegaPixel
	Field of View	78°
	Focal Length	10-50mm
	Camera Lights	6 LED lights
	Surface and edges	Free of pores, cracks, and remainders of tooling agents
	Water resistance	The inside of otoscope can withstand a positive pressure of 22kPa for more than 1 minute without air leakage

Others	Working Voltage	3.7V
	Charging Voltage	DC 5V
	Storage Capacity	Built-in 8GB Memory
	Battery Capacity	1380mAh Lithium Polymer Battery
	Video format	AVI
Network	Image and video display	APP, WIFI
	Network standard	IEEE802.11b/g/n
	Antenna	Built-in IPEX antenna
	Operating frequency	2.4GHZ
	Data rate	802.11a/b/g/n

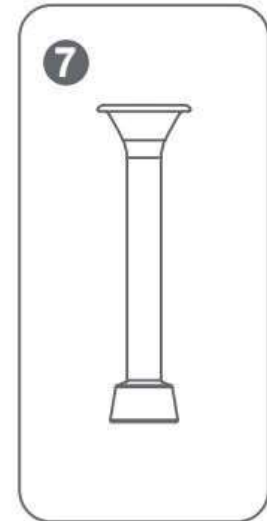
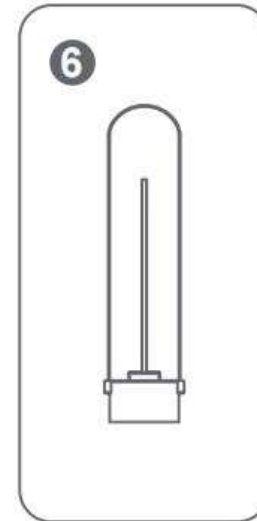
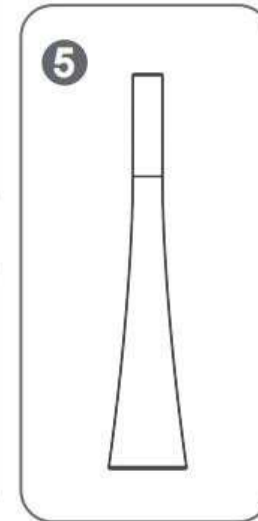
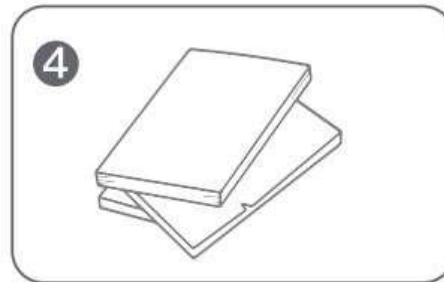
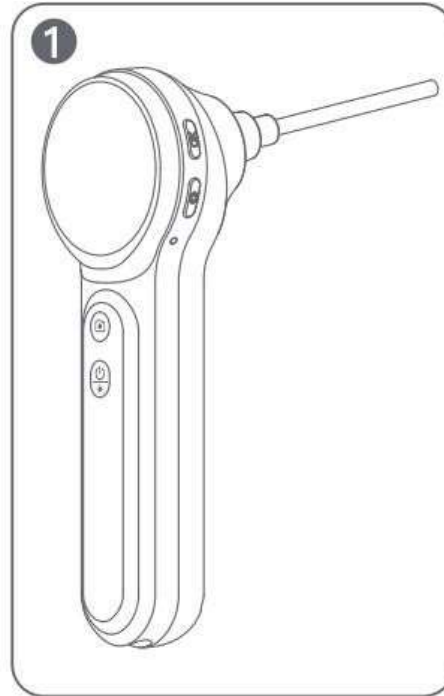
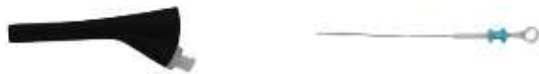




Packing List



1. TT-OTS100 Veterinary Otoscope
2. Portable case
3. USB Cable
4. User Manual & Safety Warning Manual
5. Earmuff Accessories
6. Spatula Accessories
7. Skin Examination Accessories
8. **Forceps & Sheath Accessory xtra**
9. *Optional Flexible Accessory*



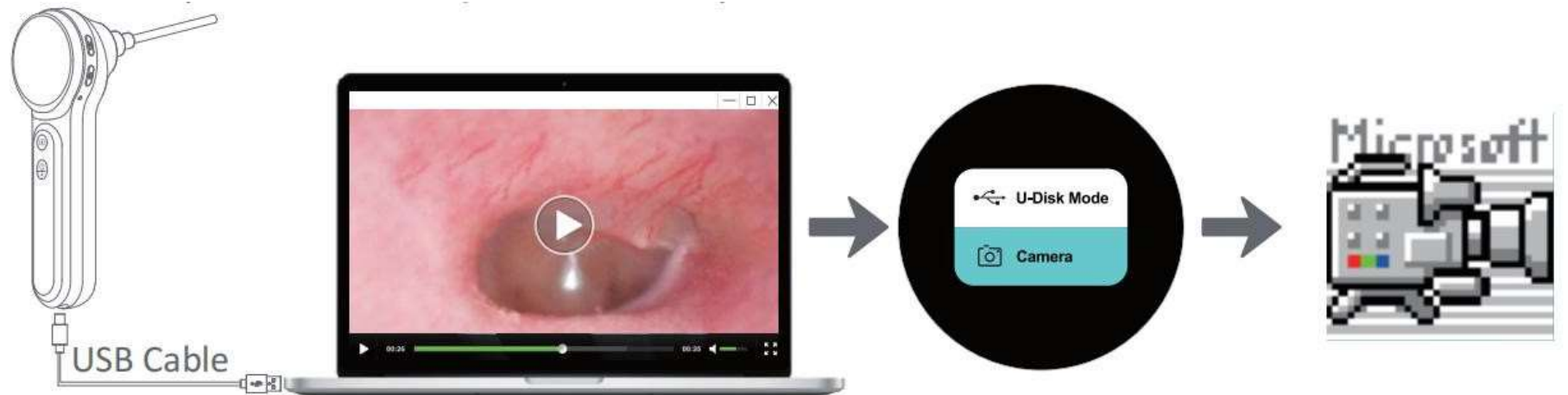
App Operation/Wired transfer



Press and hold the settings button to turn on WiFi, to connect the APP for mobile operation and checking.



Wired transfer photo and video via type-C port





Battery Charging



Use a conventional 5V/1A or 5V/2A USB interface power supply to charge the device.



Charging cable



Power on charging status



Shutdown charging status

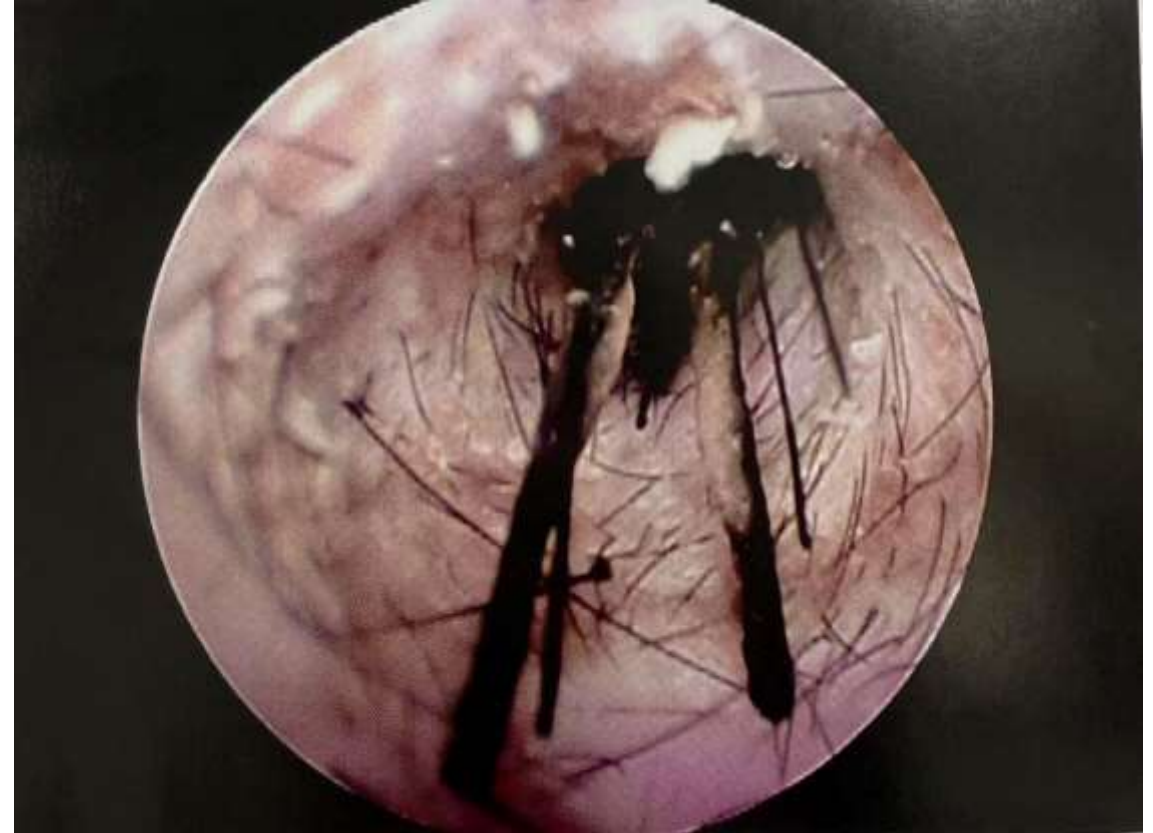




Clinic pictures



Ear allergy



Foreign body in the ear canal





Clinic pictures



Parasites in the ear canal



Yeast in the ear canal

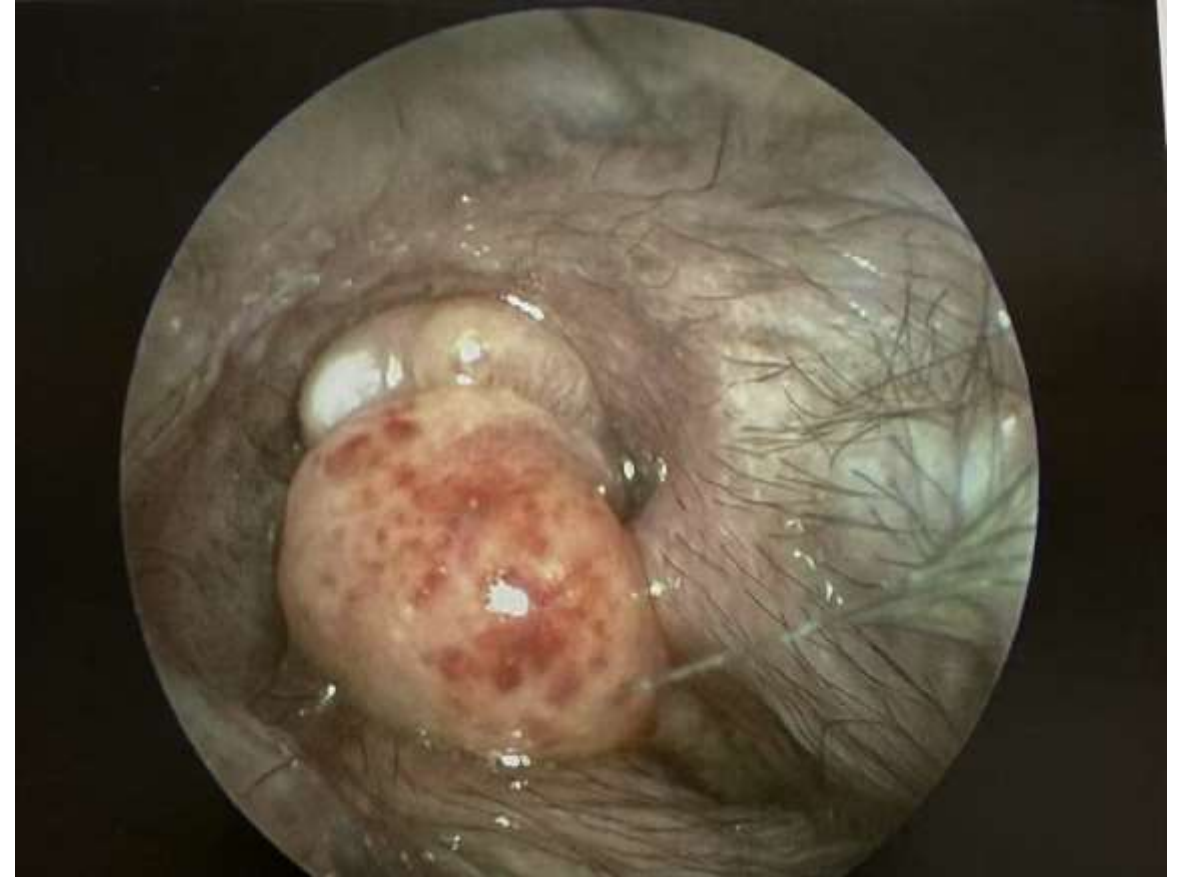




Clinic pictures



Polyps in the ear canal



Tumor in the ear canal





Clinic pictures



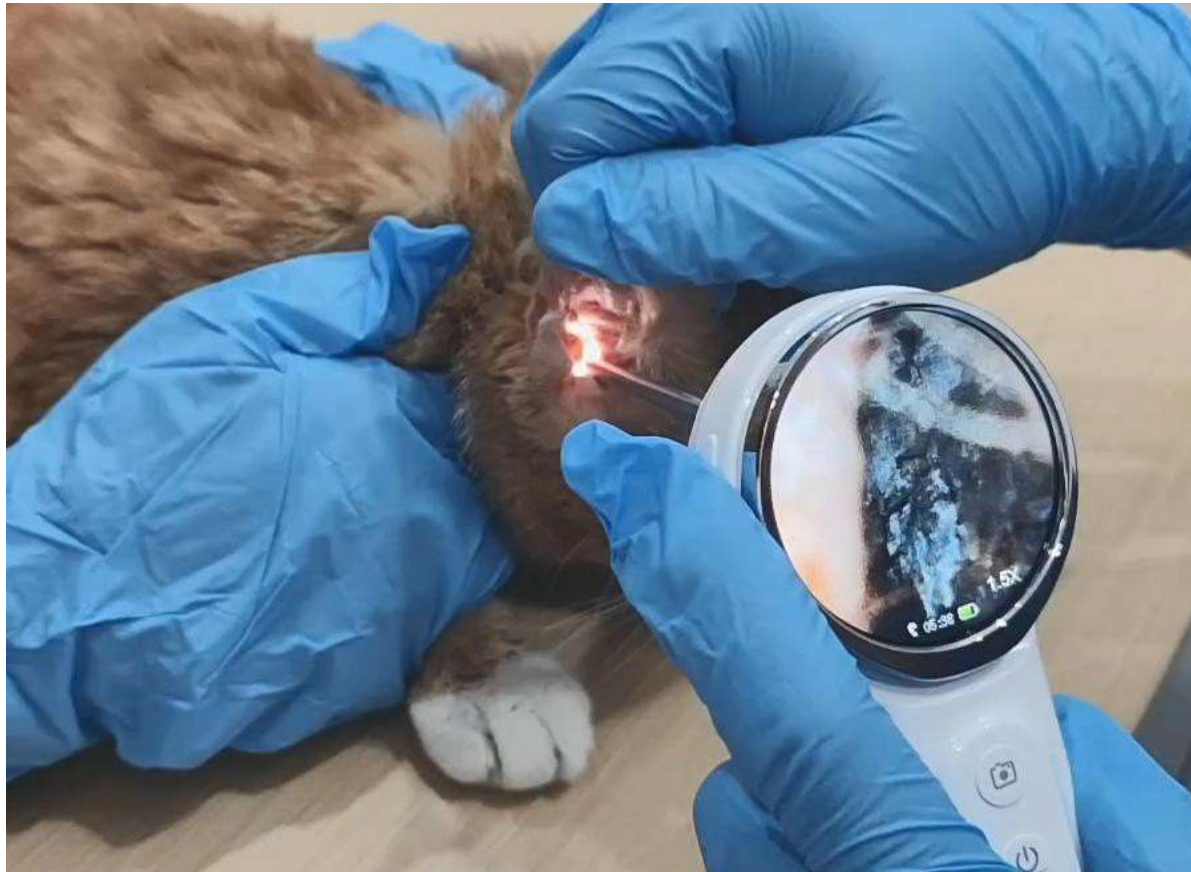
Narrow ear canal



Perforated eardrum



Clinic Video-Detection of Ear Mites



Watch the video



Extended application - laryngoscope



Watch the video





Extended application -Uroscope



Watch the video

