

# PROFESSIONAL WALK-IN KENNEL SYSTEM



| Pro *for* Pros



# Professional Walk-in Kennel System



USKN Series is our Newest Walk-in Kennel System.

All the components of this series can be customized to fit your needs and space.

Various combination can be made of front door, side plates and accessories. We can make these of various materials.

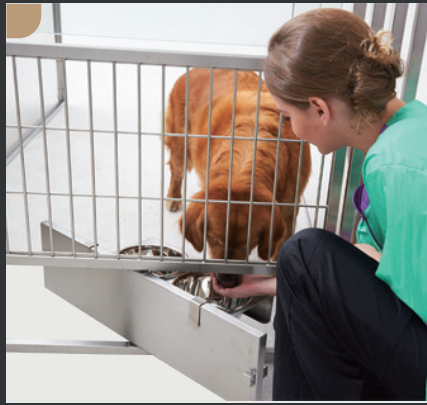
The kennels in your dreams are here. Various combinations of stainless steel, high density HDPE, tempered glass and/or powder coated steel leaves you with many different material choices.

55% Al-Zn Alloy will become one of the most valued options in our line too.

Swivel feeding door, one-click magnetic latch, easy-to-lift guillotine door, etc.; many user-friendly designs can be incorporated into this system.

We welcome all inquiries, requirements and customized orders.

Our engineers and designers will be happy to help lay out 2D and 3D renderings for your consideration.



Stainless Steel Feeding Bowl and Mount USKN-FDB-150 & USKN-FDSB-002



Stainless Steel Name Card Holder 5"× 3" or 8"× 5" USKN-NMHD-3/5 & USKN-NMHD-5/8



Guillotine Door USKN-GD71-1830



# Professional Walk-in Kennel (USKN series)

**Pet friendly: Luxurious place for pets to live in and reduce the stress.**

**Elevated floor:** Made of durable materials such as plastic, composite wood or metal, providing a comfortable and hygienic surface for the dogs to stand, sleep, or rest on and allowing for easy cleaning and drainage of waste or liquids.

**Drainage system:** easy to clean the kennel and clear wastes.

**Side wall:** stainless steel frame and HDPE panel. Solid structure and easy maintenance.

**Easy installation:** Module assembly. Easy to assemble and connect cubicles.

Middle dividing guillotine gate can be controlled by a double-control pulley system to connect two rooms or separate the rooms. Easy to adjust room allocation according to pet population. Also make it an easy job to clean the kennel by easily moving the pets in one room to the other room.

**Practical and user-friendly accessories:** Swivel feeding door, one-click magnetic latch, etc.

**Customizable for you to choose different materials and displays that are most suitable to your place.**



Comfortable space for animals



Front view



Side view



Top grid



Double decker kennel



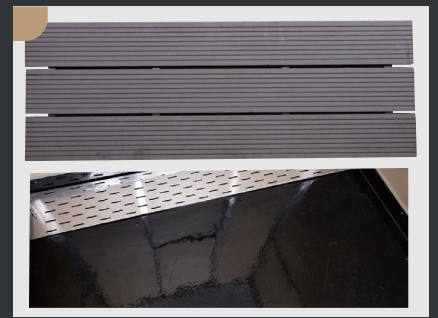
Drainage system available



Semi-finished kennel



Side wall: stainless steel frame and HDPE panel



Steel floor with rubberizing coating:  
Easy to clean and maintain



Filter cover for protecting the drainage trough



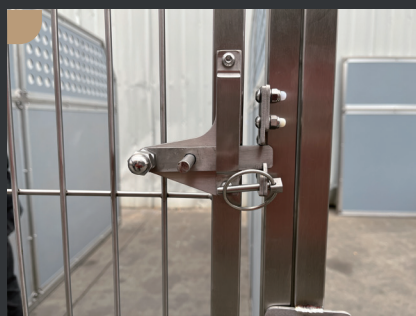
Middle guillotine door



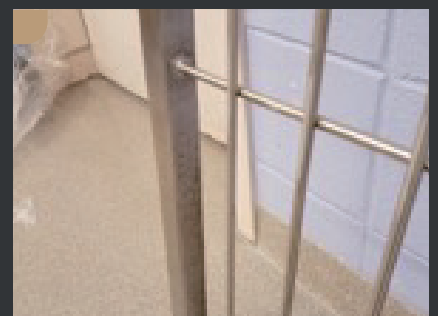
Control knob of the double control pulley system with weight balancer



Heavy duty hinge



Professional safe kennel door latch



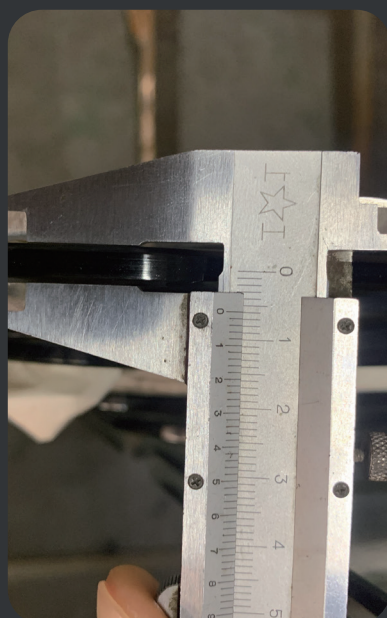
Fully welded bars

# OPTIONS FOR EACH KENNEL

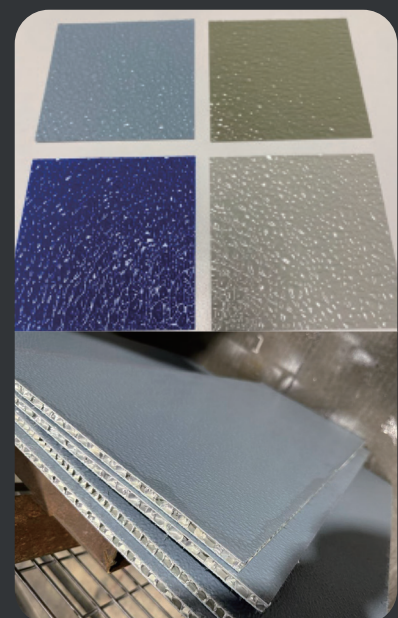
Back Wall					
Fully Isolated Back Wall made from 8mm FRP Panel with Stainless Steel Frame.	Fully Isolated Back Wall made from powder coated Galvalume panel.	Fully Isolated Back Wall made from 10mm HDPE Panel with Stainless Steel Frame.	Fully Isolated Back Wall by Stainless Steel Solid Panel.		
Door					
Tempered Glass Door made from S/S, inward/ourward opening door portion at 3ft, without Stationary portion, without swivel feeding access.	Wire Grid Door made from S/S, inward/ourward opening door portion at 3ft, without Stationary portion, without swivel feeding access.	Tempered Glass Door made from S/S, inward/ourward opening door portion at 3ft, without Stationary portion, with swivel feeding access.	Wire Grid Door made from S/S, inward/ourward opening door portion at 3ft, without Stationary portion, with swivel feeding access.	Tempered Glass Door with Powder Coated Galvanized Door Frame, 3ftx6ft, inward/ourward opening, door portion at 3ft, without Stationary portion, with swivel feeding access.	Tempered Glass Door with Powder Coated Galvanized Door Frame, 3ftx6ft, inward/ourward opening, door portion at 3ft, without Stationary portion, with swivel feeding access.
Side Wall					
Stainless Steel Isolation at Bottom and Wire Grid on Top.	10mm HDPE Side Panel, Top Portion with smoothly drilled ventilation holes, Bottom Portion made from solid HDPE Panel for full isolation, 6ftx6ft, 1pcs.	Powder Coated Galvalume Side Wall, Top Portion made from powder coated galvanized wire grid, bottom fully isolated made from powder coated Galvalume panel, 6ftx6ft, 1pcs.	8mm FRP Side Panel, Top Portion made from 10mm HDPE with smoothly drilled ventilation holes, Bottom Portion made from solid 8mm thick FRP Panel for full isolation, 6ftx6ft.		
Optional Accessories					
Top Cover		Walk-on Grid	Draining Pan		
Powder Coated Galvanized Top Wire Grid.	S/S made Top Wire Grid.	Wood-Plastic Composite Heavy Duty Walk-on Grid, 3ftx6ft.	Galvalume Fully Welded & Paint Pen Treated Draining Pan, 3ftx6ft.	Stainless Steel Fully Welded & Polished Draining Pan, 3ftx6ft.	

# VARIOUS MATERIAL OPTIONS

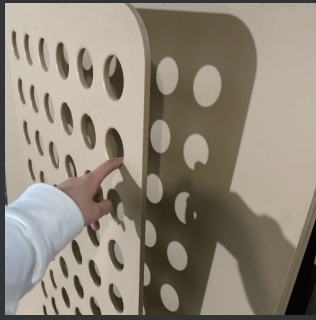
Tempered glass



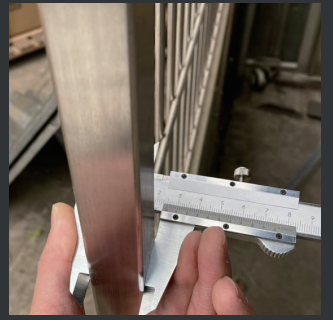
FRP



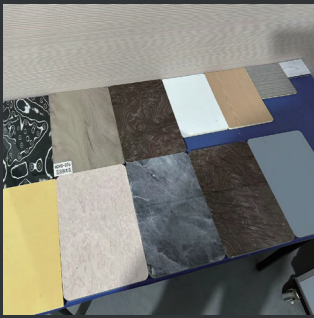
HDPE



Stainless steel



PVC



Galvalume



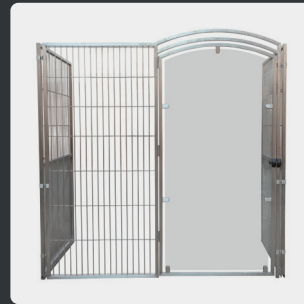
## FRONT DOOR



Full Stainless Steel Grid  
+ swivel feeding access



Full Stainless Steel Grid



Stainless Steel Grid  
+Arch Top Tempered  
Glass



S/S Grid+Arch Top  
Tempered Glass+swivel  
feeding access



Bottom made from HDPE  
+Top made from S/S Grid



Full Tempered Glass  
+swivel feeding access



Full Tempered Glass



S/S Grid at bottom  
+Tempered Glass at top  
with swivel feeding access

## SIDE WALL



Solid HDPE bottom  
+smooth ventilation holes



Solid galvalume bottom  
panel+304 S/S grid



S/S Grid+Solid Panel



S/S Grid+Solid Panel



Tempered Glass+HDPE



Full HDPE



S/S Solid Panel



Powder Coated Galvalume

## BACK WALL



S/S Grid+Solid Panel



Full HDPE



Tempered Glass+HDPE

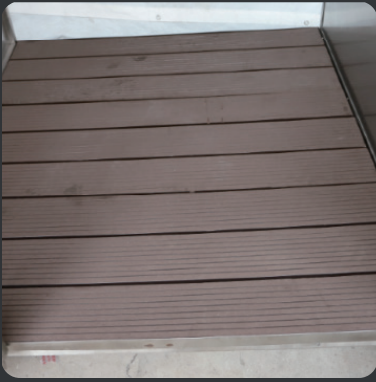


Solid galvalume back panel



You can use your back wall or side wall to be the back panel or side panel respectively too

## **ACCESSORIES**



Draining Pan with Wood-Plastic Composite Grid



Guillotine Door



Swivel Feeding Access



Name Card Holder



Top Grid

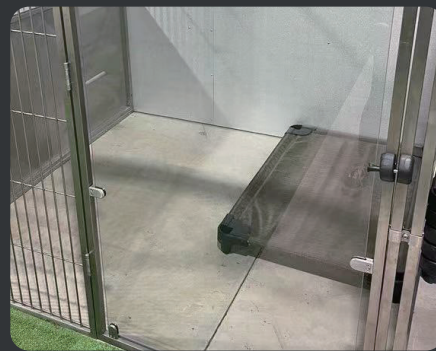


Rest Bed

## **DOOR LATCH OPTIONS**



Inward & Outward Opening S/S Latch



Silent Magnetic Latch



Double Locking S/S Latch

## **MINI MODEL AVAILABLE FOR YOUR SHOW ROOM**



Draining Kennel with FRP Door



Draining Kennel with Tempered Glass Door

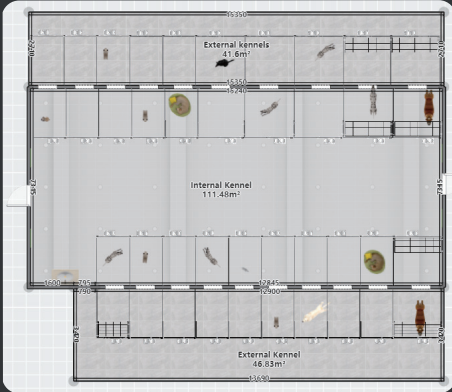


Powder Coated Galvalume Kennel with Wire Grid Door

*\*This is a model photo, the actual product shall prevail*

# 3D RENDERING

We can design your own kennel scheme according to requirements such as quantity of cells, cell size, material selection, function selection, etc.



Floor Plan



3D Preview



Scan or click to walk around

<https://www.kujiale.com/pub/tool/render/image/display/3FOAAIY9VK5V?type=2>



Vivid Virtual View

Share your draft drawing with size/space information, we will help you lay out 3D virtual view.



Scan or click to walk around



Floor Plan



3D Preview

<https://www.kujiale.com/pub/tool/render/image/display/3FOAAIQ6JP51?type=2>



Vivid Virtual View

# 3D RENDERING



## MORE 3D RENDERING



## PANORAMIC RENDERING



## MORE 3D RENDERING

## MORE 3D RENDERING



## PANORAMIC RENDERING



In a dog kennel 3D rendering, the virtual environment can showcase various aspects of the kennel design, including its size, layout, materials, colors, and features. It allows for a detailed visualization of the overall structure, such as the walls, roof, doors, windows, and flooring.

By creating a 3D rendering of a dog kennel, designers, architects, or pet owners can evaluate and fine-tune the design before construction begins. It provides an opportunity to assess the space, functionality, and aesthetics of the kennel, ensuring that it meets the desired requirements for the comfort and safety of the dogs. The 3D rendering also offers a realistic preview for marketing or presentation purposes, allowing potential clients or stakeholders to visualize the final product accurately.

**ACTUAL APPLICATION**

**A GLANCE AT THE  
KENNEL PROJECTS  
WE HAVE COMPLETED.**



**ACTUAL APPLICATION**

# ACTUAL APPLICATION



Case Presentation



# ACTUAL APPLICATION

# ACTUAL APPLICATION



Case Presentation



# ACTUAL APPLICATION

# ACTUAL APPLICATION



Case Presentation

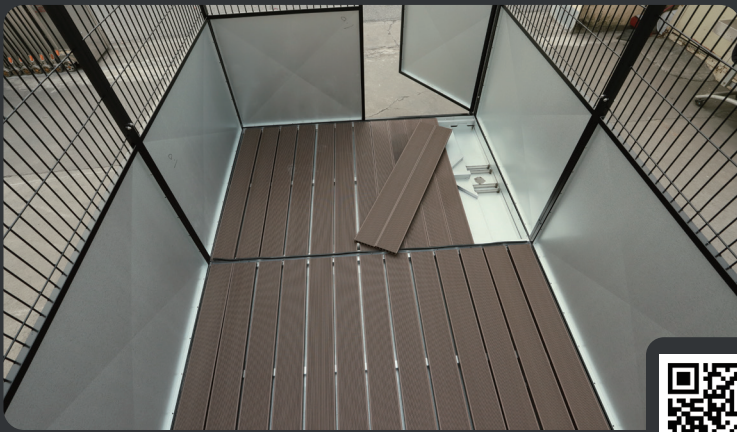


# ACTUAL APPLICATION

# ACTUAL APPLICATION



Case Presentation



Case Presentation



# ACTUAL APPLICATION

# ACTUAL APPLICATION



Case Presentation

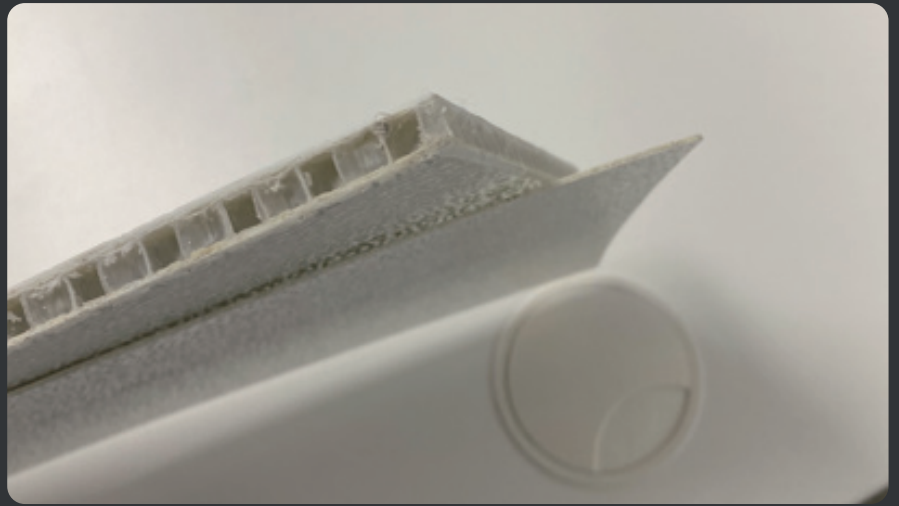


Drainage Testing



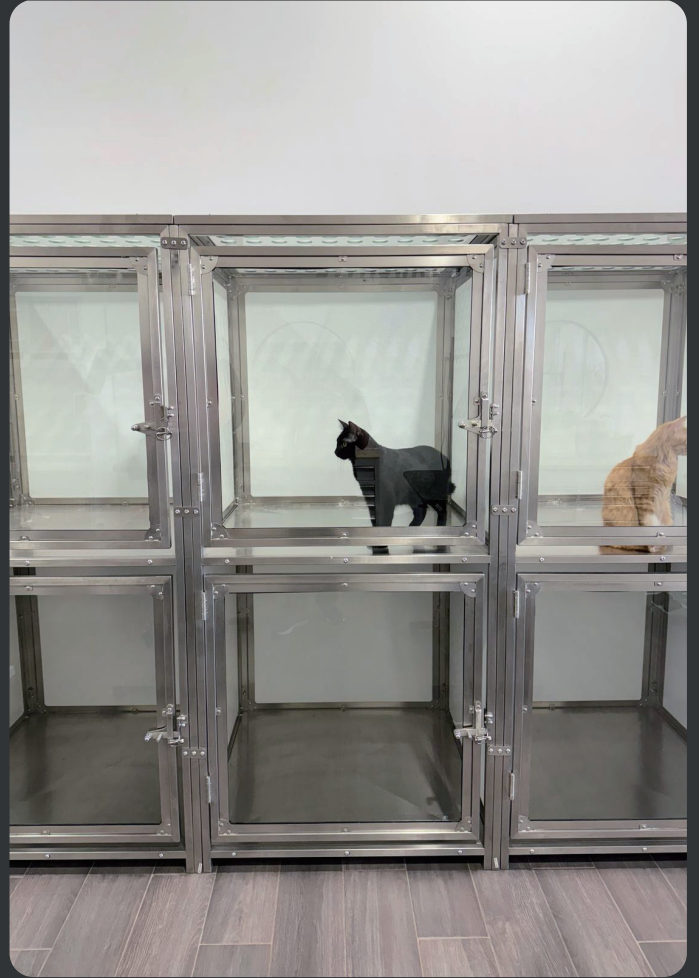
# ACTUAL APPLICATION

# ACTUAL APPLICATION



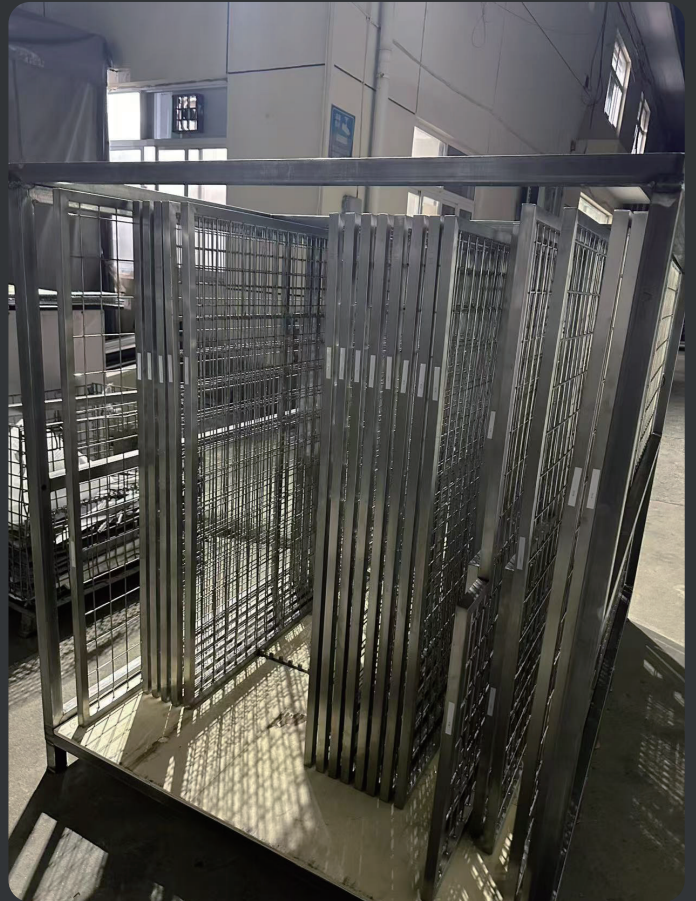
# ACTUAL APPLICATION

# ACTUAL APPLICATION



# ACTUAL APPLICATION

# ACTUAL APPLICATION



# ACTUAL APPLICATION

# Checklist

Share this check list with your sales representative to start a conversation about what we can offer your facility.

## 1. Building specification

Estimated opening date: \_\_\_\_\_

New or  Remodel

Address: \_\_\_\_\_

Are drawings available?  Yes or  No

Room dimensions: Length \_\_\_\_\_ Width \_\_\_\_\_ Height \_\_\_\_\_

Building construction:  Block Walls or  Studs

Is there a floor slope currently?  Yes (Slope angle: ) or  No

Are drains already installed?  Yes or  No

Are there any additional obstacles around the drains?  Yes or  No

Has electric already been run?  Yes or  No

Are there any additional obstacles around the electrical work?  Yes or  No

## 2. Kennel specification

Each kennel dimensions: Length \_\_\_\_\_ Width \_\_\_\_\_ Height \_\_\_\_\_

Indoor or  Outdoor

### Gate

Style:

Arch top  Flat top

Material:

Tempered glass+stainless grid  Full Tempered glass  Full stainless grid  Stainless steel panel + Stainless steel grid  HDPE panel + stainless grid  FRP panel + stainless grid

Stationary Portion:

Yes  No

Swivel feeding door:

Yes  No

### Side Panel

Style

Full height  3/4 Height

Full or 3/4 Panel Material: Stainless Steel panel Galvanized Steel panel HDPE panel FRP panel Cement(no need of bottom side panel, only need top grill)

1/4 Portion Material:

Stainless Steel Grill Powder coated galvanized Steel Grill  
HDPE panel with ventilation holes

Additional requirement or fully customized requirement: \_\_\_\_\_

### Back Panel

Style:

Full height 3/4 Height

Full or 3/4 Panel Material: Stainless Steel panel Galvanized Steel panel  
HDPE panel FRP panel Cement

1/4 portion Material: Stainless Steel Grill Powder coated galvanized Steel Grill  
Glass HDPE panel with ventilation holes

Need guillotine door or not: Yes No

If yes, is it On Back Panel or On Existing Back Wall

Additional requirement or fully customized requirement: \_\_\_\_\_

### Draining Pan

Yes No

Material

Stainless Steel panel Galvanized Steel panel

## 3. Aesthetics & Options

If you choose powder coated Galvalume panel, we have many colors for choose:

Black White Silver Mango Green Gray Dark blue  
Pink Burgundy Purple Orange

If you choose HDPE panel, we have 2 colors for choose:

Grey Blue Cream

Drainage System: Trough Vacuum with controllable valve None

## 4. Additional information

Please note any logistical problems for delivery (eg. do you have forklift and people to unload the goods from truck ) and/or attach photos/drawings of area. It helps to send in drawings even if they are hand drawn.



**AEOLUS**

**AEOLUS International Pet Products**  
**[www.AEOLUSpet.com](http://www.AEOLUSpet.com)**